

W MANAGEMENT

A Division Of Boss Models



KAREN HAACKE.

Height: 175cm Waist: 67cm Hips: 92cm Shoe: 7 UK Hair: Brown Eyes: Blue

W MANAGEMENT

A Division Of Boss Models



KAREN HAACKE.

Height: 175cm Waist: 67cm Hips: 92cm Shoe: 7 UK Hair: Brown Eyes: Blue

W MANAGEMENT

A Division Of Boss Models



ADVERTORIAL

All Clear

Q & A with RoC

What's behind skin blotchiness and brown marks?
The formation of brown marks, or pigmentation on the skin, stems from hormonal changes, contraception, pregnancy, sun exposure and the natural ageing process. This may result in your skin taking on a dull and uneven complexion.

How can these marks be lightened?
With the RoC® SOYA™ UNIFY range, you can reduce brown marks and create an even complexion so that your skin regains its natural, youthful glow. The range contains a patented form of active soy that is clinically proven to regulate the production and transfer of melanin, the pigment responsible for brown marks. At the same time, trace elements like copper and zinc help to stimulate cells, while light reflectors increase your skin's radiance. The range consists of a cleanser, exfoliating gel, day cream with UVA filters and light reflectors, and a night cream.



Try RoC® SOYA™ UNIFY to give your skin back its youthful, natural radiance. Regular use leads to a visible improvement in skin tone and leaves your complexion even-toned and younger looking.

Available at selected Sainsbury, Next, Debenhams and Primark stores, as well as at Chemist and selected pharmacies. For more information, call 0800 410032 or visit www.proudhair.co.uk

© 2008 ROCHÉ COSMETICS LTD. All rights reserved. Photo: David Laundy for Proudhair. Model: Karen Haacke. Hair: David Laundy for Proudhair. Makeup: David Laundy for Proudhair.

12 SEPTEMBER 2008



KAREN HAACKE.

Height: 175cm Waist: 67cm Hips: 92cm Shoe: 7 UK Hair: Brown Eyes: Blue

W MANAGEMENT

A Division Of Boss Models

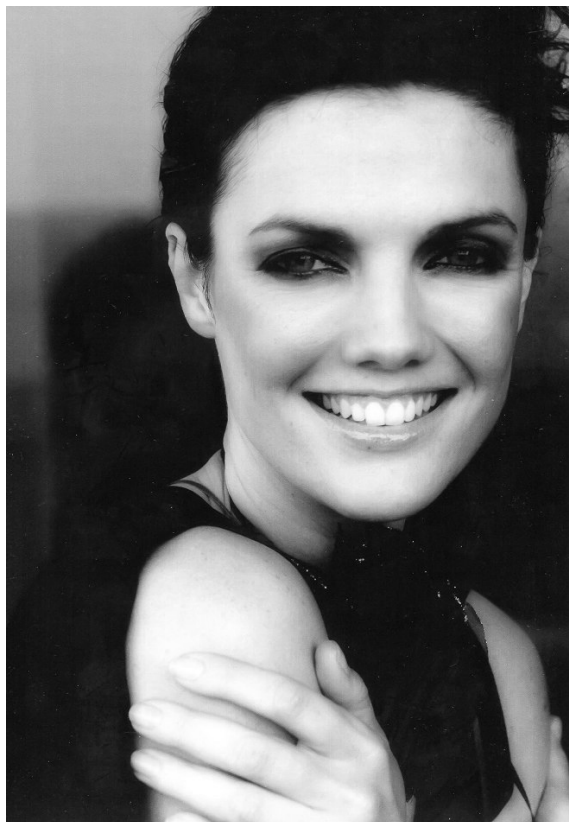


KAREN HAACKE.

Height: 175cm Waist: 67cm Hips: 92cm Shoe: 7 UK Hair: Brown Eyes: Blue

W MANAGEMENT

A Division Of Boss Models



KAREN HAACKE.

Height: 175cm Waist: 67cm Hips: 92cm Shoe: 7 UK Hair: Brown Eyes: Blue