

BOSS MODELS

CAPE TOWN



FASHION ADVICE **ESSENTIALS**

FUNCTIONAL ACCESSORIES
Complete your look with materials that'll stand up to a storm.

BROLLY
While super-functional, umbrellas tend to be the easiest thing to loose. If you live in the Western Cape, the wind also significantly shortens the life span of most flimsy conventional designs. That's why you need a bright solid colour, so you won't run the risk of forgetting it in your Uber, as well as a sturdy and ergonomic design that can withstand strong winds and, in the event that one of the ribs jumps out of the rib ends, it can easily be fed back inside. You'll also want to go for something with a wider spread for more protection against the rain.

WATCH STRAPS
Many watches come with interchangeable straps. It would be inadvisable to go out in the rain with a leather one. Your best bet is to go for a nylon or canvas strap. Stainless steel is another option. Just make sure your watch body is watertight.

QUICK-DRY FABRICS
Waterproofing or resistance is one thing; getting dry is another. Natural textiles tend to hold water for longer, which means you'll be uncomfortable for longer and possibly even start smelling like old milk. Synthetic materials are great at keeping water out, but they also tend to keep water in, which means you'll start to sweat and cultivate your own unsavoury perfumes. Go for the best of both worlds — a polyester blend that will breathe but also give you some resistance to the outside world. **GO**

Country Road jacket R2 200. Calvin Klein jersey R2 195. Golf shirt R2 49. Jigsaw pants R1 695. Citizen watch R2 999. Blunt umbrella R1 195. Lacoste sneakers R2 195.

MAY 2016 **60.CO.ZA 27**

FASHION ADVICE **ESSENTIALS**

URBAN ADVENTURER
The elements are no match for the man who comes prepared.

WIND BREAKER BOMBER
Offering you water resistance while diffusing those heavy gusts of wind, wind-breaker bombers are often better than coats and twice as stylish. While not as effective against water, the body hugging design won't flap in the wind, or worse, act as a sail. Go for a padded lining for warmth. A collar is an absolute must-have.

DOUBLE UP
Need more wind and water resistance? No problem. Simply layer up with a tough industrial fabric like denim: a coloured waistcoat or denim jacket will do. It's lightweight enough and will keep you wind- and water-tight. For the ultimate protection, wear a turtleneck with extended sleeves or thumb holes for total protection.

DURABLE BAG
A wet bag is a worst-case scenario for any man, especially when said bag is unlined, contains valuables or is made from a hydrophobic material, like suede. Pick something waterproof or water repellent, like vinyl, nylon or a synthetic canvas. Go for something sturdy with reinforced seams.

Robert Daniel windbreaker R2 800. Jigsaw jacket R2 399. Craig Port turtleneck R330. Kurt Geiger jeans R1 295. Citizen watch R2 999. Country Road duffel bag R2 195. Gecko at Jomp boots R1 199.

MAY 2016 **60.CO.ZA 25**

TIMOTHY MORAKE

Height: 188cm Chest: 96cm Waist: 81cm Suit: 38 L Shoe: 10 UK Hair: Black Eyes: Brown

CAPE TOWN



Height: 188cm Chest: 96cm Waist: 81cm Suit: 38 L Shoe: 10 UK Hair: Black Eyes: Brown

BOSS MODELS

CAPE TOWN



TIMOTHY MORAKE

Height: 188cm Chest: 96cm Waist: 81cm Suit: 38 L Shoe: 10 UK Hair: Black Eyes: Brown

BOSS MODELS

CAPE TOWN

ESSENTIALS MANUAL

3

RED CARPET

Classic doesn't mean traditional, but respect for tradition is essential for mastering the look. You don't want your black-tie ensemble to make you look like the waiter that tried too hard, but you also don't want to wear your expensive outfit to be stuffy and predictable.

LUX TUX

This is where we stick to our guns. A classic tux is a must have. Tuxedos are becoming more readily available here, so now you can get really exceptional ones at affordable prices – every man should own one. You don't need to go frisky with the fancy contrasting lapels and white accents. Keep it modern and sophisticated in all-black with a satin lapel.

Trenery tuxedo jacket R3 299, tuxedo trousers R1 795, **Emporio Armani** at **Witch Republic** watch R4 299, **Country Road** brogue R975

GOING AGAINST THE GRAIN

Traditionally your tux would go with a white dress shirt, either with a fitted, ribbed or pleated breast. The world is less ornate in 2016, so skip out of the coffin and into a shirt with a different character – perhaps black contrasting buttons. Leave out the cummerbund entirely and don a red bow tie in lieu of a black one.

Topman shirt R429, **Rosé & Ghezzi** at **Spaghetti Mafia** bow tie R760

POCKET SQUARE

Most men's ears start bleeding at the sound of the term pocket square. Do you match it to your shirt? Do you match it to your tie? Do you match it to anything? Essentially, there are no rules. However, we would advise you against matching your pocket square to your bow tie. It is, however, absolutely essential to wear one with a tux. So, for the sake of preserving tradition, make sure it's crisp white in either linen or cotton.

32 00.CO.ZA DECEMBER 2015/JANUARY 2016

ESSENTIALS MANUAL

4

BLOCK PARTY

We're taking the party to the streets. You want to be dapper, but with a difference. So get your street style on in small measures to make sure you blend in with the scene.

UNCONVENTIONALLY CHIC

Think way out of the box and pair pieces together that wouldn't normally match to create a more jarring look, but bring the harmony in by pairing colours. Swap conventional items, like a shirt, with uncharacteristic ones instead, like a windbreaker.

G-Star Raw blazer R3 999, shirt R1 699, **Topman** trousers R740, **Rosé & Ghezzi** at **Spaghetti Mafia** bow tie R760

MIRROR MIRROR

Nothing says it's a party like a reflective surface covered in white speckles, by which we mean a sporty reflective material like this one. It's a great way to bring some street luv into your look without making it seem like you stumbled off the set of a music video.

G-Star Raw bomber R2 799

BE THE LIFE

It's crucial that your wardrobe has a personality because people will be interested enough to approach you. Combine pieces that are more playful, like a whimsical print or a statement bow tie. Aim for light humour instead of comedy. **GG**

34 00.CO.ZA DECEMBER 2015/JANUARY 2016

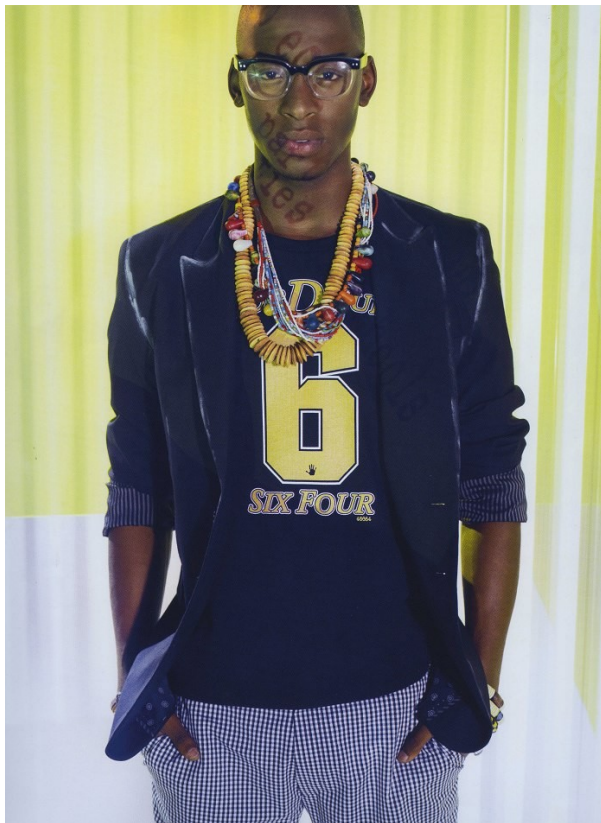


TIMOTHY MORAKE

Height: 188cm Chest: 96cm Waist: 81cm Suit: 38 L Shoe: 10 UK Hair: Black Eyes: Brown

BOSS MODELS

CAPE TOWN



TIMOTHY MORAKE

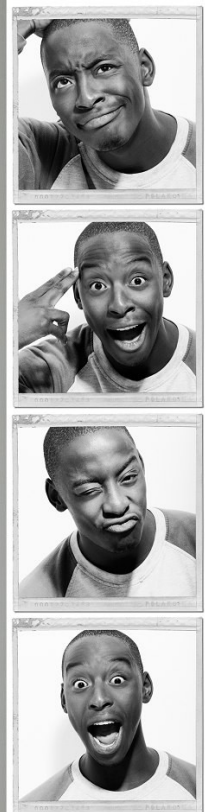
Height: 188cm Chest: 96cm Waist: 81cm Suit: 38 L Shoe: 10 UK Hair: Black Eyes: Brown

BOSS MODELS

CAPE TOWN



Markham



TIMOTHY MORAKE

Height: 188cm Chest: 96cm Waist: 81cm Suit: 38 L Shoe: 10 UK Hair: Black Eyes: Brown

BOSS MODELS

CAPE TOWN



TIMOTHY MORAKE

Height: 188cm Chest: 96cm Waist: 81cm Suit: 38 L Shoe: 10 UK Hair: Black Eyes: Brown

CAPE TOWN



Height: 188cm Chest: 96cm Waist: 81cm Suit: 38 L Shoe: 10 UK Hair: Black Eyes: Brown

BOSS MODELS

CAPE TOWN

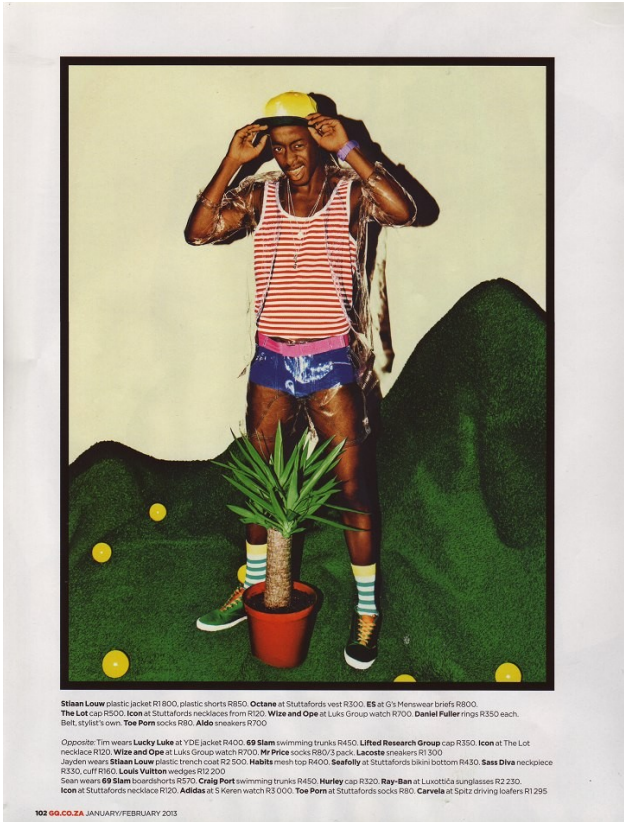


TIMOTHY MORAKE

Height: 188cm Chest: 96cm Waist: 81cm Suit: 38 L Shoe: 10 UK Hair: Black Eyes: Brown

BOSS MODELS

CAPE TOWN



TIMOTHY MORAKE

Height: 188cm Chest: 96cm Waist: 81cm Suit: 38 L Shoe: 10 UK Hair: Black Eyes: Brown

BOSS MODELS

CAPE TOWN



TIMOTHY MORAKE

Height: 188cm Chest: 96cm Waist: 81cm Suit: 38 L Shoe: 10 UK Hair: Black Eyes: Brown