

# BOSS MODELS

CAPE TOWN



STUART BELLAMY

Height: 193cm Chest: 102cm Waist: 84cm Suit: 42 L Shoe: 11 UK Hair: Blonde Eyes: Blue

# BOSS MODELS

CAPE TOWN



STUART BELLAMY

Height: 193cm Chest: 102cm Waist: 84cm Suit: 42 L Shoe: 11 UK Hair: Blonde Eyes: Blue

# BOSS MODELS

CAPE TOWN



## STOCKISTS

EDGARS, 0860692274, [www.edgars.co.za/Edgars](http://www.edgars.co.za/Edgars)

SECOND TIME AROUND, 021 423 1674 Long St

MUNGO AND JEMIMA, 021 424 5016, [www.mungoandjemima.com](http://www.mungoandjemima.com)

LEVI'S, 021 425 3046, [www.levi.co.za](http://www.levi.co.za)

SECOND HAND ROSE, 021 674 4270 Claremont

YMEWK, [www.facebook.com/pages/You-Me-Everyone-we-know-Market/146962628667694](https://www.facebook.com/pages/You-Me-Everyone-we-know-Market/146962628667694)

WOOLWORTHS, 0860 022 002, [www.woolworths.co.za](http://www.woolworths.co.za)

JO BORKETT, 011 462 0604, [www.joborkett.co.za](http://www.joborkett.co.za)

## STUART BELLAMY

Height: 193cm Chest: 102cm Waist: 84cm Suit: 42 L Shoe: 11 UK Hair: Blonde Eyes: Blue

# BOSS MODELS

CAPE TOWN



STUART BELLAMY

Height: 193cm Chest: 102cm Waist: 84cm Suit: 42 L Shoe: 11 UK Hair: Blonde Eyes: Blue

# BOSS MODELS

CAPE TOWN



STUART BELLAMY

Height: 193cm Chest: 102cm Waist: 84cm Suit: 42 L Shoe: 11 UK Hair: Blonde Eyes: Blue

# BOSS MODELS

CAPE TOWN



STUART BELLAMY

Height: 193cm Chest: 102cm Waist: 84cm Suit: 42 L Shoe: 11 UK Hair: Blonde Eyes: Blue

# BOSS MODELS

CAPE TOWN



STUART BELLAMY

Height: 193cm Chest: 102cm Waist: 84cm Suit: 42 L Shoe: 11 UK Hair: Blonde Eyes: Blue

# BOSS MODELS

CAPE TOWN



## STUART BELLAMY

Height: 193cm Chest: 102cm Waist: 84cm Suit: 42 L Shoe: 11 UK Hair: Blonde Eyes: Blue

# BOSS MODELS

CAPE TOWN



STUART BELLAMY

Height: 193cm Chest: 102cm Waist: 84cm Suit: 42 L Shoe: 11 UK Hair: Blonde Eyes: Blue

# BOSS MODELS

CAPE TOWN

GGStyle

## HIGH ROLLER



Opposite page from left: Adam wears **Zara** coat R1 999, rollneck R7 99, **Hugo Boss** Red suit R10 740. **Tom Ford** at **SDM** eyewear R7 500. **Arthur Jack** at **Tread+Miller** bag R4 650. Stuart wears **Burberry** coat R28 490, scarf R7 090. **H&M** sweater R529, pants R799. **Tom Ford** at **Armstrong** eyewear R23 37. **Arthur Jack** at **Tread+Miller** bag R5 999.

Tiger of Sweden jacket R7 499. **Zara** rollneck R529. **Tom Ford** at **Armstrong** eyewear R6 325.

**Tip** Spend more on designer shades or a classic grey blazer.

**Tip** Spend less on a turtleneck or rollneck.

SEPTEMBER 2017 GG.CO.ZA 91



## STUART BELLAMY

Height: 193cm Chest: 102cm Waist: 84cm Suit: 42 L Shoe: 11 UK Hair: Blonde Eyes: Blue

# BOSS MODELS

CAPE TOWN



STUART BELLAMY

Height: 193cm Chest: 102cm Waist: 84cm Suit: 42 L Shoe: 11 UK Hair: Blonde Eyes: Blue

# BOSS MODELS

CAPE TOWN



## STUART BELLAMY

Height: 193cm Chest: 102cm Waist: 84cm Suit: 42 L Shoe: 11 UK Hair: Blonde Eyes: Blue

# BOSS MODELS

CAPE TOWN



## STUART BELLAMY

Height: 193cm Chest: 102cm Waist: 84cm Suit: 42 L Shoe: 11 UK Hair: Blonde Eyes: Blue

# BOSS MODELS

CAPE TOWN



STUART BELLAMY

Height: 193cm Chest: 102cm Waist: 84cm Suit: 42 L Shoe: 11 UK Hair: Blonde Eyes: Blue

# BOSS MODELS

CAPE TOWN



## STUART BELLAMY

Height: 193cm Chest: 102cm Waist: 84cm Suit: 42 L Shoe: 11 UK Hair: Blonde Eyes: Blue

# BOSS MODELS

CAPE TOWN



STUART BELLAMY

Height: 193cm Chest: 102cm Waist: 84cm Suit: 42 L Shoe: 11 UK Hair: Blonde Eyes: Blue

# BOSS MODELS

CAPE TOWN



## STUART BELLAMY

Height: 193cm Chest: 102cm Waist: 84cm Suit: 42 L Shoe: 11 UK Hair: Blonde Eyes: Blue

# BOSS MODELS

CAPE TOWN



STUART BELLAMY

Height: 193cm Chest: 102cm Waist: 84cm Suit: 42 L Shoe: 11 UK Hair: Blonde Eyes: Blue

# BOSS MODELS

CAPE TOWN



STUART BELLAMY

Height: 193cm Chest: 102cm Waist: 84cm Suit: 42 L Shoe: 11 UK Hair: Blonde Eyes: Blue

# BOSS MODELS

CAPE TOWN



**GGStyle**

## LUNCH MEETING

Opposite page from left: Stuart wears **Hugo Boss Red** suit R12 495, shirt R2 250, tie R1 250. Ben Sherman sweater R1 499. **Fossil** watch R4 499. **Call it Spring** shoes R990. Adam wears **Boss for Hugo Boss** suit R14 205, sweater R3 395, shirt R1 895. **H&M** pocket square R141. **Fossil** watch R3 399.

Ted Baker suit PQR, waistcoat R2 599, shirt R2 699. **Zara** shoes R1 299

**Tip Spend more** on a waistcoat.

**Tip Spend less** and be clever so you won't have to buy a whole new three-piece.

SEPTEMBER 2017 **GG.CO.ZA** 97

## STUART BELLAMY

Height: 193cm Chest: 102cm Waist: 84cm Suit: 42 L Shoe: 11 UK Hair: Blonde Eyes: Blue

# BOSS MODELS

CAPE TOWN



## STUART BELLAMY

Height: 193cm Chest: 102cm Waist: 84cm Suit: 42 L Shoe: 11 UK Hair: Blonde Eyes: Blue

# BOSS MODELS

CAPE TOWN

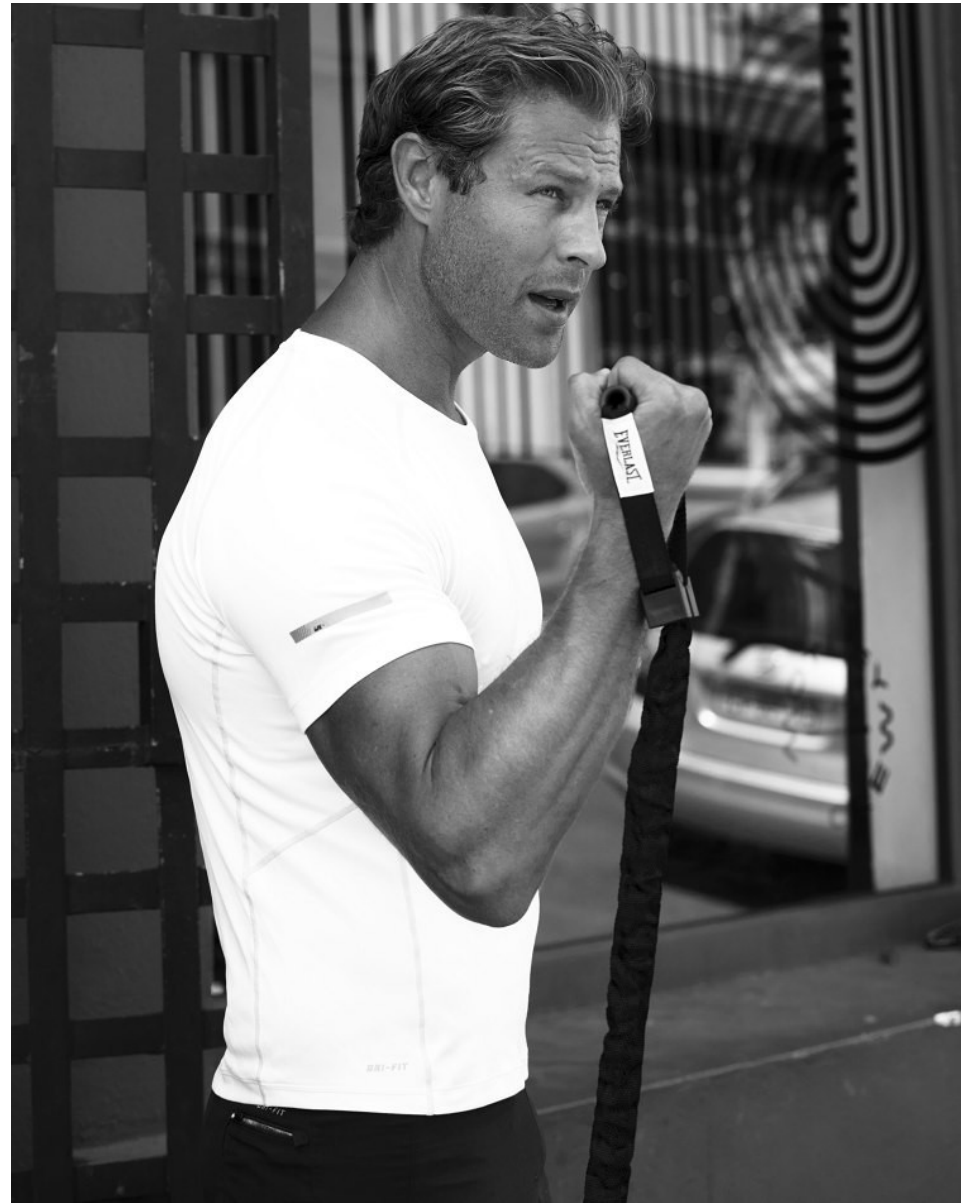


## STUART BELLAMY

Height: 193cm Chest: 102cm Waist: 84cm Suit: 42 L Shoe: 11 UK Hair: Blonde Eyes: Blue

# BOSS MODELS

CAPE TOWN



STUART BELLAMY

Height: 193cm Chest: 102cm Waist: 84cm Suit: 42 L Shoe: 11 UK Hair: Blonde Eyes: Blue

# BOSS MODELS

CAPE TOWN



STUART BELLAMY

Height: 193cm Chest: 102cm Waist: 84cm Suit: 42 L Shoe: 11 UK Hair: Blonde Eyes: Blue