

# BOSS MODELS

CAPE TOWN



ADEOLA ARIYO

Height: 176cm Bust: 83cm Waist: 62cm Hips: 94cm Shoe: 7 UK Hair: Black Eyes: Brown

# BOSS MODELS

CAPE TOWN



ADEOLA ARIYO

Height: 176cm Bust: 83cm Waist: 62cm Hips: 94cm Shoe: 7 UK Hair: Black Eyes: Brown

# BOSS MODELS

CAPE TOWN



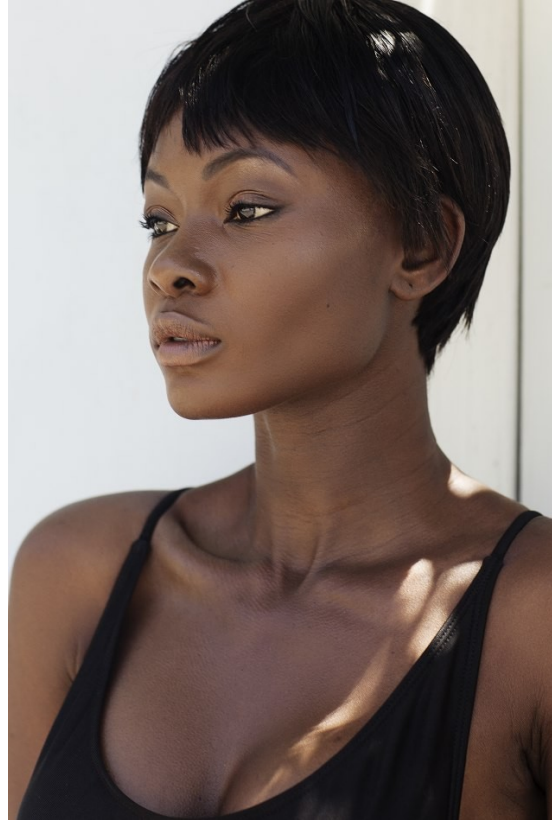
ADEOLA ARIYO

Height: 176cm Bust: 83cm Waist: 62cm Hips: 94cm Shoe: 7 UK Hair: Black Eyes: Brown



# BOSS MODELS

CAPE TOWN



ADEOLA ARIYO

Height: 176cm Bust: 83cm Waist: 62cm Hips: 94cm Shoe: 7 UK Hair: Black Eyes: Brown

# BOSS MODELS

CAPE TOWN



## 3. MODERN MUSE

To keep your look contemporary, opt for mixed-metal trappings and layer your wrist pieces over your garments – nothing should go unnoticed!

Jersey: R440, Thesinger jacket, R2 499, Country Road pants, R2 500, Rothy earrings, R1 800, Piqua Green necklace, R1 400, Koko jewelry: right-hand watch, R2 499, Ochoy at Hatch Republic: rose-finger-plain bands, R299 each, Country Road: diamond-chip ring, R1 350, and middle-finger ring, R1 150, both Blue Bell: ring-finger ring, 2016, American Gem: left-hand ring, R1 350, Koko jewelry.

124 WOMEN'S HEALTH / August 2015 / [women'shealth.co.za](http://women'shealth.co.za)



## 4. COLOUR CONTRAST

When matching your jewellery to your outfit, go for contrasting tones. Here, warm rose golds offset cool greys perfectly.

Koko dress, R795, Forever New: jacket, R4 500, Rothy: rose-gold over cuffs, R2 399 each, Thesinger: Ochoy: corn necklace, R184, Zulu: left-hand double-ring ring, R200, and matching left ring, R100, both Koko: silver cuff, R1 299, American Gem: diamond band, R199, Ganes at 5: Blucher 8 Oz watch, R159, Tempa at Stone: right-hand double-finger ring, R150, Lonsa.

August 2015 / WOMEN'S HEALTH



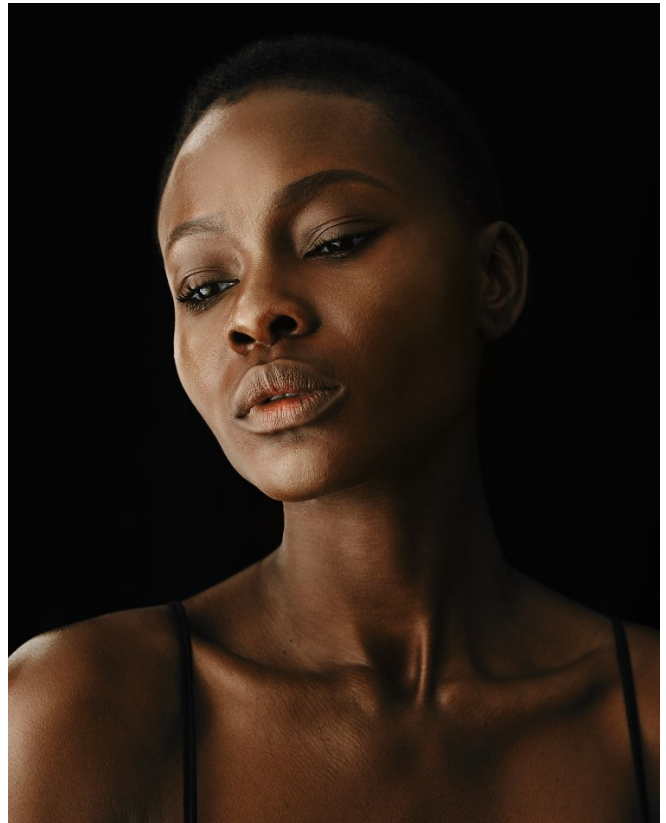
ADEOLA ARIYO

Height: 176cm Bust: 83cm Waist: 62cm Hips: 94cm Shoe: 7 UK Hair: Black Eyes: Brown



# BOSS MODELS

CAPE TOWN



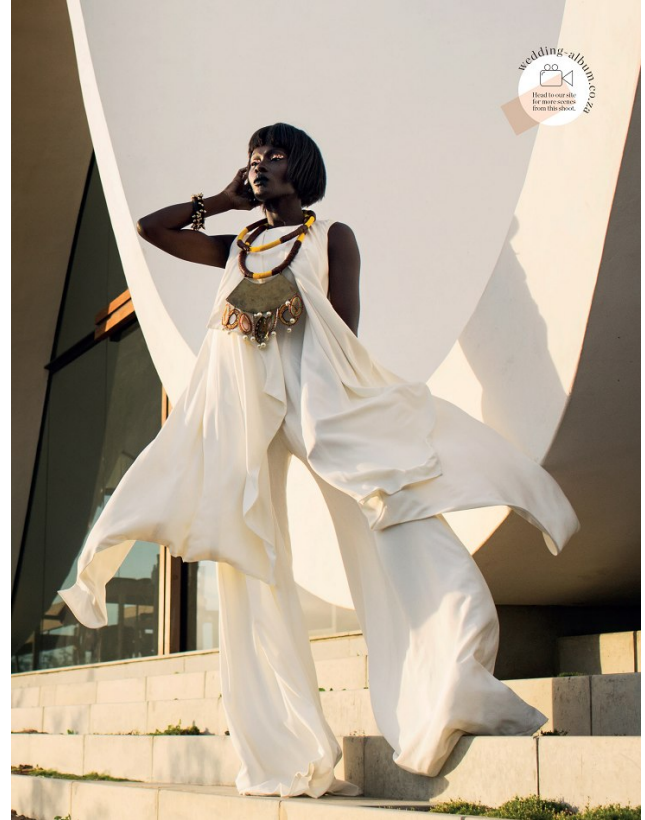
ADEOLA ARIYO

Height: 176cm Bust: 83cm Waist: 62cm Hips: 94cm Shoe: 7 UK Hair: Black Eyes: Brown



# BOSS MODELS

CAPE TOWN



ADEOLA ARIYO

Height: 176cm Bust: 83cm Waist: 62cm Hips: 94cm Shoe: 7 UK Hair: Black Eyes: Brown



# BOSS MODELS

CAPE TOWN



ADEOLA ARIYO

Height: 176cm Bust: 83cm Waist: 62cm Hips: 94cm Shoe: 7 UK Hair: Black Eyes: Brown



# BOSS MODELS

CAPE TOWN



## You mean business

*Simply add your jacket and tie it all together with a belt*



## Call of the wild

*Cropped trousers and a sleeveless trench transforms from effortless summer style to a winter classic with the addition of snug faux fur.*



Perfect Trench Jacket (R1350), Label Femme  
Zayden coat dress (R1599), Pringle  
Studded Heels (R990), Sam Star  
Patent bag (R799), Paula Design  
Necklace - cancelled

*As seen on [spree.co.za](http://spree.co.za)*



Celebrity Faux fur jacket (R1450), Fate  
Quinn sleeveless trench jacket (R1499), Pringle  
Spotted jacquard pants (R920), Gordon Smith  
Animal-print Midi-heels (R370), Pierre Cardin

*As seen on [spree.co.za](http://spree.co.za)*

## ADEOLA ARIYO

Height: 176cm Bust: 83cm Waist: 62cm Hips: 94cm Shoe: 7 UK Hair: Black Eyes: Brown

# BOSS MODELS

CAPE TOWN



## ADEOLA ARIYO

Height: 176cm Bust: 83cm Waist: 62cm Hips: 94cm Shoe: 7 UK Hair: Black Eyes: Brown