



**MERLE WILLMORE**

Height: 175cm Bust: 105cm Waist: 85cm Hips: 98cm Shoe: 7 UK Hair: Salt and Pepper Eyes: Green



**citizen**  
*A Division Of Boss Models*



**MERLE WILLMORE**

Height: 175cm Bust: 105cm Waist: 85cm Hips: 98cm Shoe: 7 UK Hair: Salt and Pepper Eyes: Green



**citizen**  
*A Division Of Boss Models*



**MERLE WILLMORE**

Height: 175cm Bust: 105cm Waist: 85cm Hips: 98cm Shoe: 7 UK Hair: Salt and Pepper Eyes: Green





**HG MODE**

'Gegewe my liggaamsvorm en ouderdom, het ek altyd die stewelpypvorm verkies. Maar ek was baie verbaas om te ontdek ek voel eintlik heel op my gemak en funky in kerejeans!

**MERLE WORSLEY WILLMORE (68)**  
KUNSTENAAR EN LEWENSOPRICHTER

**WENK KORT KEREL-JEANS**  
As 39-jarige Merle, 'n ondersteboedriehoeksvorm het, kan kereljeans help om jou verhoudings te balanseer omdat dit toeser om jou heupe sit.

Top R229, Makro; Kort kereljeans R250, Woolworths; Juwele R150, natuurlike R20, Mladys; Flakleure R150, en skouer sak R450, Frosch.

**WENK STEWELPYJEANS**  
Dit soort jeans is baie vleitend vir 'n driehoek-liggaamstipe. Dit skep vorm en die lengte is perfek.

Hemp R350, Woolworths; Stewelpypjeans R399, Frosch; Skouer R1,299, Damespark; Hekletoene R300 en halsonkerstel R120, Mladys; Handboek R450, Frosch.

(Blas om)

hugobos.com 16 APRIL 2019 | 35



## MERLE WILLMORE

Height: 175cm Bust: 105cm Waist: 85cm Hips: 98cm Shoe: 7 UK Hair: Salt and Pepper Eyes: Green





**MERLE WILLMORE**

Height: 175cm Bust: 105cm Waist: 85cm Hips: 98cm Shoe: 7 UK Hair: Salt and Pepper Eyes: Green

**citizen**  
*A Division Of Boss Models*



**MERLE WILLMORE**

Height: 175cm Bust: 105cm Waist: 85cm Hips: 98cm Shoe: 7 UK Hair: Salt and Pepper Eyes: Green



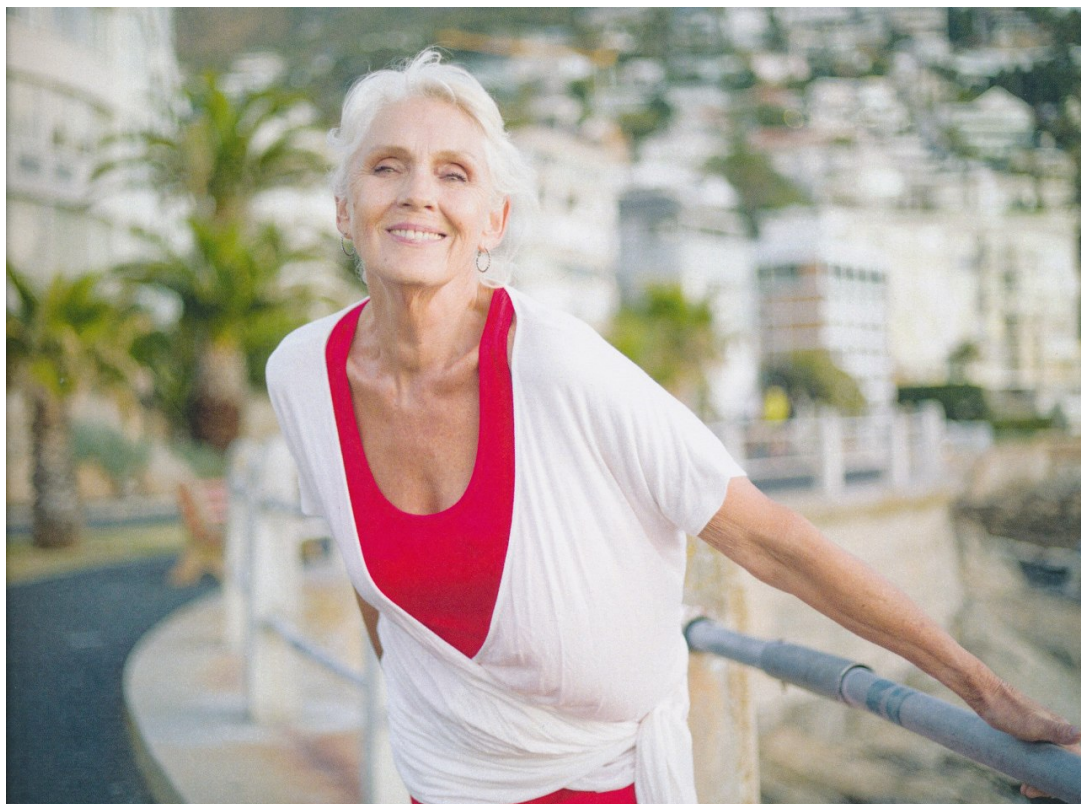
**citizen**  
*A Division Of Boss Models*



**MERLE WILLMORE**

Height: 175cm Bust: 105cm Waist: 85cm Hips: 98cm Shoe: 7 UK Hair: Salt and Pepper Eyes: Green





**MERLE WILLMORE**

Height: 175cm Bust: 105cm Waist: 85cm Hips: 98cm Shoe: 7 UK Hair: Salt and Pepper Eyes: Green