

**citizen**  
*A Division Of Boss Models*



**THEMBI KOBEDI**

Height: 179cm Bust: 84cm Waist: 73cm Hips: 114cm Shoe: 8 UK Hair: Black Eyes: Brown

**citizen**  
*A Division Of Boss Models*



**THEMBI KOBEDI**

Height: 179cm Bust: 84cm Waist: 73cm Hips: 114cm Shoe: 8 UK Hair: Black Eyes: Brown

**citizen**  
*A Division Of Boss Models*



**THEMBI KOBEDI**

Height: 179cm Bust: 84cm Waist: 73cm Hips: 114cm Shoe: 8 UK Hair: Black Eyes: Brown



**citizen**  
*A Division Of Boss Models*



**THEMBI KOBEDI**

Height: 179cm Bust: 84cm Waist: 73cm Hips: 114cm Shoe: 8 UK Hair: Black Eyes: Brown



**THEMBI KOBEDI**

Height: 179cm Bust: 84cm Waist: 73cm Hips: 114cm Shoe: 8 UK Hair: Black Eyes: Brown



**citizen**  
*A Division Of Boss Models*



**THEMBI KOBEDI**

Height: 179cm Bust: 84cm Waist: 73cm Hips: 114cm Shoe: 8 UK Hair: Black Eyes: Brown



**THEMBI KOBEDI**

Height: 179cm Bust: 84cm Waist: 73cm Hips: 114cm Shoe: 8 UK Hair: Black Eyes: Brown

TIARA PAGE:  
DRESS by: Laci  
Gretchen via Spina  
Bride VELL: Spina Bride  
OPPOSITE: DRESS by  
Yolan Crie



**THEMBI KOBEDI**

Height: 179cm Bust: 84cm Waist: 73cm Hips: 114cm Shoe: 8 UK Hair: Black Eyes: Brown





**THEMBI KOBEDI**

Height: 179cm Bust: 84cm Waist: 73cm Hips: 114cm Shoe: 8 UK Hair: Black Eyes: Brown

**citizen**  
*A Division Of Boss Models*



**THEMBI KOBEDI**

Height: 179cm Bust: 84cm Waist: 73cm Hips: 114cm Shoe: 8 UK Hair: Black Eyes: Brown



**citizen**  
*A Division Of Boss Models*

SPRING EDITION 2018

THE #1 MULTICULTURAL WEDDING MAGAZINE

# MunaLuchi

## Bride

FROM  
AFRICA  
WITH  
LOVE

AFRICAN-INSPIRED  
INSPIRATION  
+ TRAVEL GUIDE

150+  
*pages of*  
LUXURY  
DECOR,  
WEDDINGS,  
GOWNS,  
& MORE



**THEMBI KOBEDI**

Height: 179cm Bust: 84cm Waist: 73cm Hips: 114cm Shoe: 8 UK Hair: Black Eyes: Brown



**citizen**  
*A Division Of Boss Models*

SPRING EDITION 2018

THE #1 MULTICULTURAL WEDDING MAGAZINE

# MunaLuchi

## Bride

FROM  
AFRICA  
WITH  
LOVE

AFRICAN-INSPIRED  
INSPIRATION  
+ TRAVEL GUIDE

150+  
*pages of*  
LUXURY  
DECOR,  
WEDDINGS,  
GOWNS,  
& MORE



**THEMBI KOBEDI**

Height: 179cm Bust: 84cm Waist: 73cm Hips: 114cm Shoe: 8 UK Hair: Black Eyes: Brown



### **THE WET LOOK**

This relaxed and simple look is great for summer. It comes in colour 1 or 2 and can be worn in one length or in layers, making it versatile and convenient. The hair is full of volume and movement, but if you want to switch your look, simply spray with water for the effect shown here. After about an hour, the hair will return to its natural wave pattern. You can also flat-iron this hair to create a sleek, smooth look which will return to its original wave pattern after every shampoo and condition.

Pure Wavy 14", R3 230 per tube.  
You'll need two tubes for a full-head installation.

### **THEMBI KOBEDI**

Height: 179cm Bust: 84cm Waist: 73cm Hips: 114cm Shoe: 8 UK Hair: Black Eyes: Brown



*Hair*



Hair & make-up: Audrey Motokeng, Model: Thembi Kobedi @ Boss Models Beauty intern: Busi Manunga

**NATURALLY ME**

This 100% Indian Remy hair is from South-East Asia. To style it, use a curling iron at a low temperature to blend with your natural hair or define the curls. To revitalise the curl pattern, simply use a paddle brush to detangle, distribute product or spritz with water, scrunch and allow it to air-dry. To maintain this hair, invest in a mousse, light oil or curl-defining crème. Remember, curl-defining products are more effective when applied to wet hair.

**Tip:** Keep styling products to a minimum to prevent weighing down the hair.

Indique SEA Fiji Curl 16", R1 740 per tube. You'll need two tubes for a full-head installation.

**THEMBI KOBEDI**

Height: 179cm Bust: 84cm Waist: 73cm Hips: 114cm Shoe: 8 UK Hair: Black Eyes: Brown





**THEMBI KOBEDI**

Height: 179cm Bust: 84cm Waist: 73cm Hips: 114cm Shoe: 8 UK Hair: Black Eyes: Brown





**THEMBI KOBEDI**

Height: 179cm Bust: 84cm Waist: 73cm Hips: 114cm Shoe: 8 UK Hair: Black Eyes: Brown

DRESS FOR, TSOTETSI  
TASSEL CAPE FOR, DAVID TIALE  
HEELS R799, FOREVER NEW  
EARRINGS STYLIST'S OWN

# FROM SA DESIGNERS

Be fashion forward in the latest haute couture looks from the best South African creatives. Be inspired!

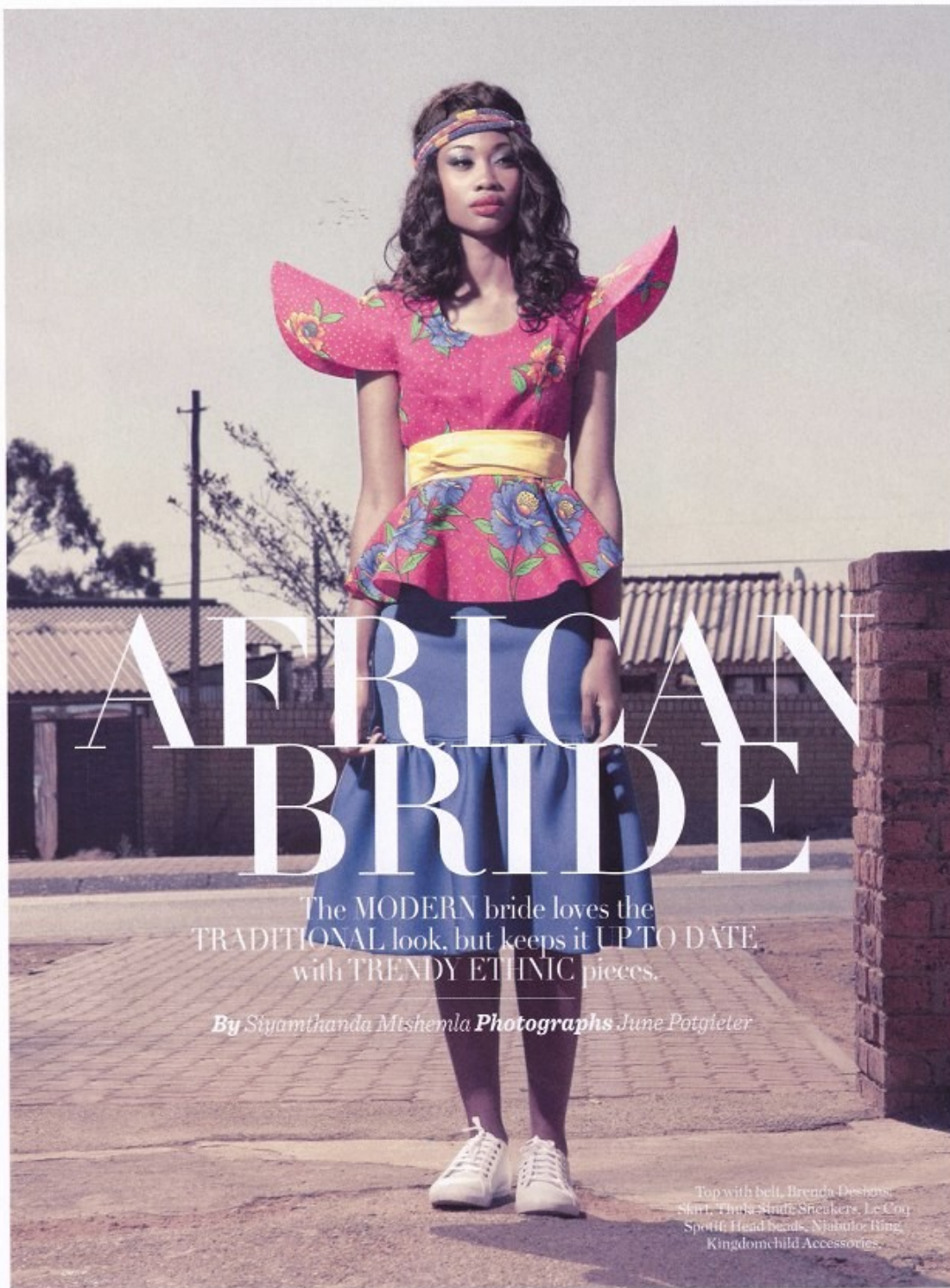
By **JESSICA RAMOSHABA** Photographs **BIANCA THERON**

54 | **AUGUST 2017** | [WWW.TRUELOVE.CO.ZA](http://WWW.TRUELOVE.CO.ZA)

**THEMBI KOBEDI**

Height: 179cm Bust: 84cm Waist: 73cm Hips: 114cm Shoe: 8 UK Hair: Black Eyes: Brown





# AFRICAN BRIDE

The MODERN bride loves the  
TRADITIONAL look, but keeps it UPTO DATE  
with TRENDY ETHNIC pieces.

*By Siyamthanda Mtshemla* **Photographs** June Potgieter

Top with belt, Brenda Deshmos.  
Skirt, Thika Studio Sneakers, Le Coq  
Sportif, Head beads, Njumbulo Ring,  
Kingdomchild Accessories.

**THEMBI KOBEDI**

Height: 179cm Bust: 84cm Waist: 73cm Hips: 114cm Shoe: 8 UK Hair: Black Eyes: Brown

**citizen**  
*A Division Of Boss Models*

DRESS by Yohji  
Crisi NECKLACES +  
BRACELET, Probatic;  
SHOES: Bello Bello for  
MunaLuchi



**THEMBI KOBEDI**

Height: 179cm Bust: 84cm Waist: 73cm Hips: 114cm Shoe: 8 UK Hair: Black Eyes: Brown





**THEMBI KOBEDI**

Height: 179cm Bust: 84cm Waist: 73cm Hips: 114cm Shoe: 8 UK Hair: Black Eyes: Brown



**citizen**  
*A Division Of Boss Models*



**THEMBI KOBEDI**

Height: 179cm Bust: 84cm Waist: 73cm Hips: 114cm Shoe: 8 UK Hair: Black Eyes: Brown

**citizen**  
*A Division Of Boss Models*



**THEMBI KOBEDI**

Height: 179cm Bust: 84cm Waist: 73cm Hips: 114cm Shoe: 8 UK Hair: Black Eyes: Brown