

BOSS MODELS

JOHANNESBURG



JES FORBER

Height: 179cm Bust: 88cm Waist: 65cm Hips: 89cm Shoe: 7 UK Hair: Auburn Red Eyes: Green

BOSS MODELS

JOHANNESBURG



JES FORBER

Height: 179cm Bust: 88cm Waist: 65cm Hips: 89cm Shoe: 7 UK Hair: Auburn Red Eyes: Green

BOSS MODELS

JOHANNESBURG



JES FORBER

Height: 179cm Bust: 88cm Waist: 65cm Hips: 89cm Shoe: 7 UK Hair: Auburn Red Eyes: Green

BOSS MODELS

JOHANNESBURG



PLAYFUL PINAFORE

+ Love a dress that moves easily? The new, loose pinafore is your perfect day-off dress.
+ Layer over a pussy-bow shirt for an interesting neckline, and don't be afraid of a bold shade.
+ Add fun with accessories. Bright tights or a colourful bag will mean all eyes on you.

Dress, R399, XS to XL, Edition at Woolworths. Shirt, R350, 6 to 18, Poetry. Stockings, R89 for two pairs, S to XXL, Woolworths. Earrings, R770, Pichulik

22 woman&home A BRAND NEW ATTITUDE



JES FORBER

Height: 179cm Bust: 88cm Waist: 65cm Hips: 89cm Shoe: 7 UK Hair: Auburn Red Eyes: Green

BOSS MODELS

JOHANNESBURG



JES FORBER

Height: 179cm Bust: 88cm Waist: 65cm Hips: 89cm Shoe: 7 UK Hair: Auburn Red Eyes: Green

BOSS MODELS

JOHANNESBURG

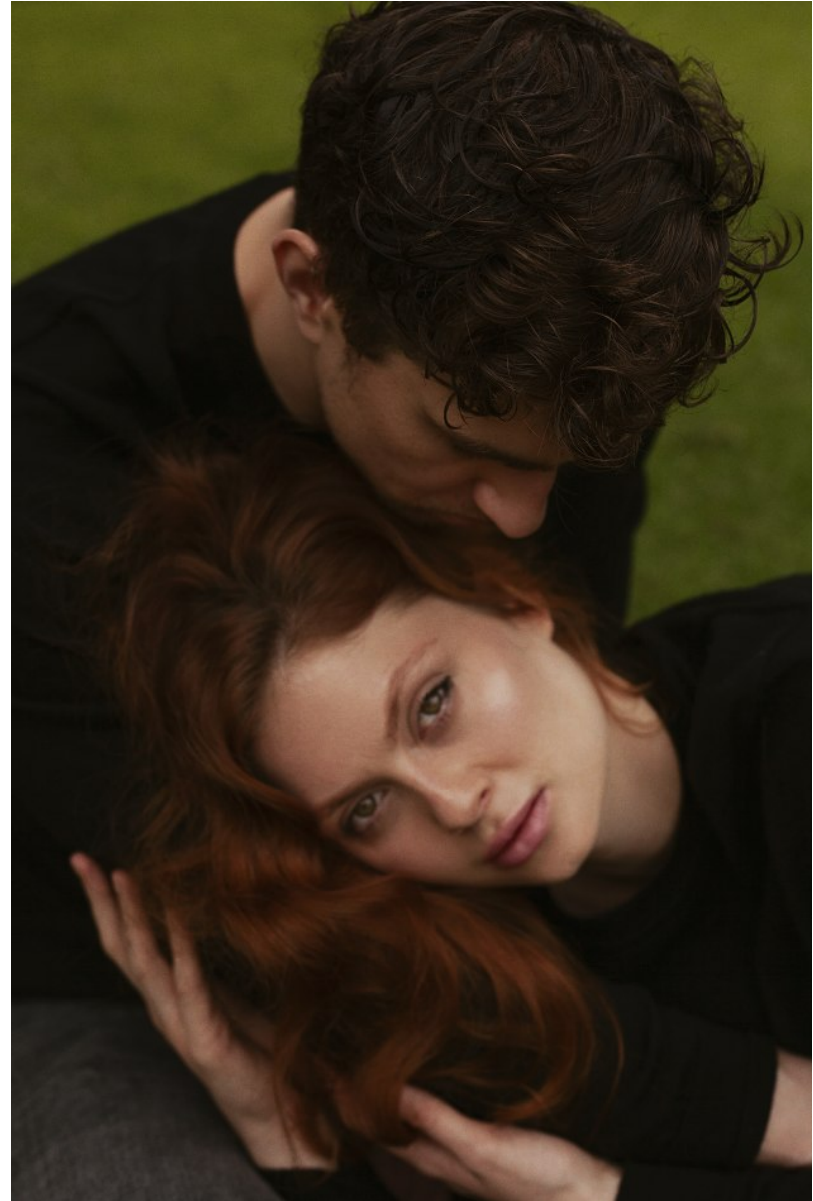


JES FORBER

Height: 179cm Bust: 88cm Waist: 65cm Hips: 89cm Shoe: 7 UK Hair: Auburn Red Eyes: Green

BOSS MODELS

JOHANNESBURG



JES FORBER

Height: 179cm Bust: 88cm Waist: 65cm Hips: 89cm Shoe: 7 UK Hair: Auburn Red Eyes: Green

BOSS MODELS

JOHANNESBURG



JES FORBER

Height: 179cm Bust: 88cm Waist: 65cm Hips: 89cm Shoe: 7 UK Hair: Auburn Red Eyes: Green

BOSS MODELS

JOHANNESBURG



JES FORBER

Height: 179cm Bust: 88cm Waist: 65cm Hips: 89cm Shoe: 7 UK Hair: Auburn Red Eyes: Green

BOSS MODELS

JOHANNESBURG



JES FORBER

Height: 179cm Bust: 88cm Waist: 65cm Hips: 89cm Shoe: 7 UK Hair: Auburn Red Eyes: Green

BOSS MODELS

JOHANNESBURG



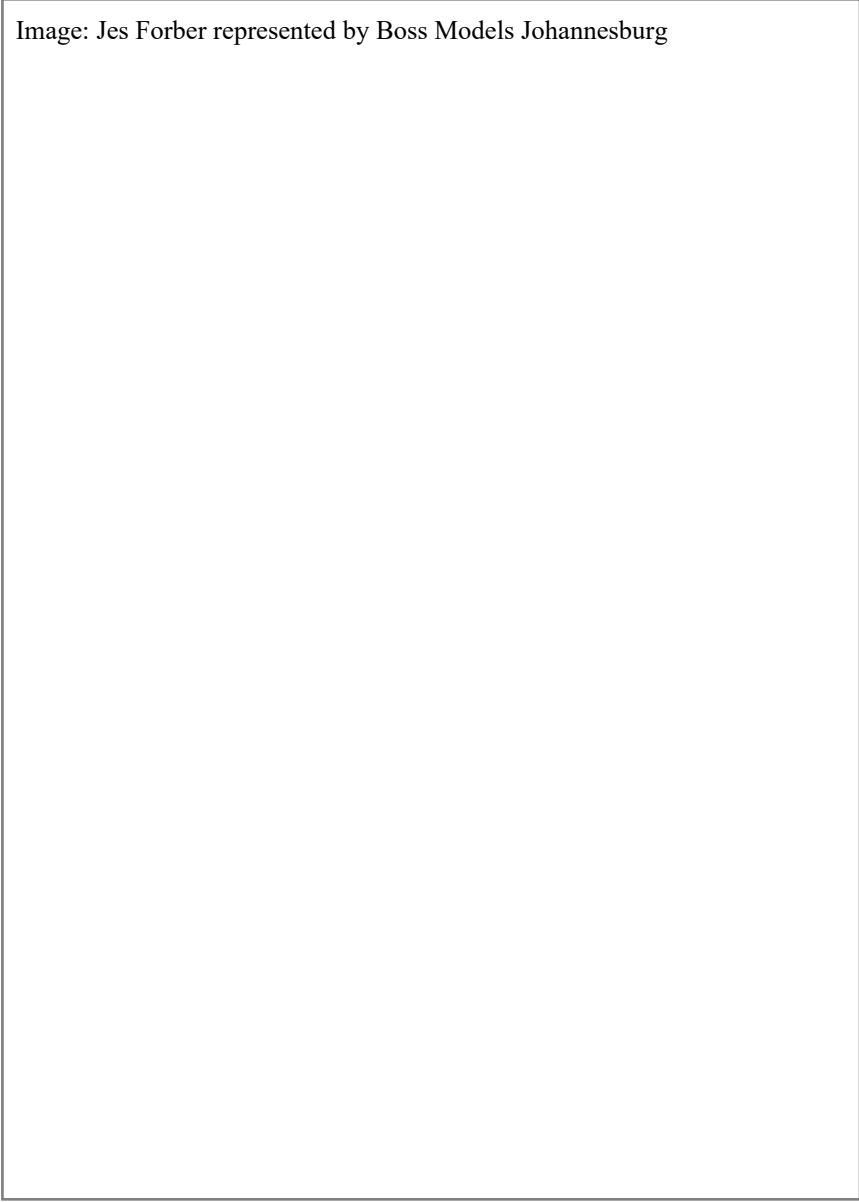
JES FORBER

Height: 179cm Bust: 88cm Waist: 65cm Hips: 89cm Shoe: 7 UK Hair: Auburn Red Eyes: Green

BOSS MODELS

JOHANNESBURG

Image: Jes Forber represented by Boss Models Johannesburg



JES FORBER

Height: 179cm Bust: 88cm Waist: 65cm Hips: 89cm Shoe: 7 UK Hair: Auburn Red Eyes: Green

BOSS MODELS

JOHANNESBURG



JES FORBER

Height: 179cm Bust: 88cm Waist: 65cm Hips: 89cm Shoe: 7 UK Hair: Auburn Red Eyes: Green

BOSS MODELS

JOHANNESBURG



JES FORBER

Height: 179cm Bust: 88cm Waist: 65cm Hips: 89cm Shoe: 7 UK Hair: Auburn Red Eyes: Green

BOSS MODELS

JOHANNESBURG



JES FORBER

Height: 179cm Bust: 88cm Waist: 65cm Hips: 89cm Shoe: 7 UK Hair: Auburn Red Eyes: Green

BOSS MODELS

JOHANNESBURG

FLOWER POWER

The frock to be seen in this season is the yellow floral tea dress. Look for details like ruffled cap sleeves and a gathered waist to hit the fashion mark, then add red accessories to take things up a notch.

Opposite page: Dress, R699, 4 to 20, Edition at Woolworths. Earrings, R110 for set of three pairs; bracelet, R120 for set of two, both Queenspark. Layered necklace, R160; handbag, R450, both Colette by Colette Hayman. Heels, R1 990, Europa Art

SUNSET SHADES

Oranges and reds are hot this summer, and there's no better way to wear them than from head to toe. Ditch the dress in favour of bright bottoms and a figure-flattering wide-sleeved blouse. Finish the look with a coordinated bag.

Top, R499, 4 to 20, studio.w at Woolworths. Pants, R579, XS to XL, Zara. Earrings, R70; necklace, R120, both Colette by Colette Hayman. Watch, R2 690, Daniel Wellington. Rings, R195 each, both Jangli. Bag, R456, African Pace at Moyo Retail >>



EYES ON THE PRIZE

A trophy jacket is a real style winner. Team it with block colours and let it speak for itself. Pull out the key colours and match your accessories accordingly. A scalloped blouse is timeless, and tucked in is the only way to work it. Jacket, R999, 8 to 18, Queenspark. Top, R780, 30 to 38, Ted Baker London. Skirt, R679, XS to XL, Zara. Drop earrings, R120; necklace, R160; bracelet, R170, all Colette by Colette Hayman. Silver ring, R750; gold ring, R125, both Jangli. Handbag, R799, Aldo >>



JES FORBER

Height: 179cm Bust: 88cm Waist: 65cm Hips: 89cm Shoe: 7 UK Hair: Auburn Red Eyes: Green

BOSS MODELS

JOHANNESBURG



JAZZY JEANS

+ Rule number one when wearing jeans? Look for an excellent, figure-flattering fit.
+ Rule number two? Wear them with confidence. You're no wallflower with silver boots and gorgeous jewellery.
+ Add an elegant, well-cut cape. It will smarten up super-simple separates in seconds.

Cape, R999, one size, Hse of Bespoke Emporium. Polo neck, from R160, 8 to 24, Contempo. Jeans, R629, 6 to 16, H&M. Earrings, R140, Vikki-Lou at YDE. Watch, R3 999, Michael Kors. Bracelet, R199, Tally Weijl. Rings, R114 for set of five, Colette by Colette Hayman. Boots, R1 999, Dune London



style inspiration

FOREST FLORALS

If you're thinking all-over prints, choose a bold forest floral rather than dainty flowers. These matching pieces do all the work for you, leaving you looking fashion forward without even trying. Throw in pops of colour with wow-factor earrings and a bright bag.

Top, R329; pants, R629, both 34 to 42, H&M. Earrings, R170; necklace, R160, both Colette by Colette Hayman. Bracelets, R130 for set of two, Queenspark. Rings, from R125 each, all Jangl

JES FORBER

Height: 179cm Bust: 88cm Waist: 65cm Hips: 89cm Shoe: 7 UK Hair: Auburn Red Eyes: Green

BOSS MODELS

JOHANNESBURG



JES FORBER

Height: 179cm Bust: 88cm Waist: 65cm Hips: 89cm Shoe: 7 UK Hair: Auburn Red Eyes: Green

BOSS MODELS

JOHANNESBURG



JES FORBER

Height: 179cm Bust: 88cm Waist: 65cm Hips: 89cm Shoe: 7 UK Hair: Auburn Red Eyes: Green

BOSS MODELS

JOHANNESBURG



JES FORBER

Height: 179cm Bust: 88cm Waist: 65cm Hips: 89cm Shoe: 7 UK Hair: Auburn Red Eyes: Green

BOSS MODELS

JOHANNESBURG



JES FORBER

Height: 179cm Bust: 88cm Waist: 65cm Hips: 89cm Shoe: 7 UK Hair: Auburn Red Eyes: Green

BOSS MODELS

JOHANNESBURG



JES FORBER

Height: 179cm Bust: 88cm Waist: 65cm Hips: 89cm Shoe: 7 UK Hair: Auburn Red Eyes: Green

BOSS MODELS

JOHANNESBURG



JES FORBER

Height: 179cm Bust: 88cm Waist: 65cm Hips: 89cm Shoe: 7 UK Hair: Auburn Red Eyes: Green

BOSS MODELS

JOHANNESBURG



JES FORBER

Height: 179cm Bust: 88cm Waist: 65cm Hips: 89cm Shoe: 7 UK Hair: Auburn Red Eyes: Green

BOSS MODELS

JOHANNESBURG



JES FORBER

Height: 179cm Bust: 88cm Waist: 65cm Hips: 89cm Shoe: 7 UK Hair: Auburn Red Eyes: Green

BOSS MODELS

JOHANNESBURG



JES FORBER

Height: 179cm Bust: 88cm Waist: 65cm Hips: 89cm Shoe: 7 UK Hair: Auburn Red Eyes: Green

BOSS MODELS

JOHANNESBURG



JES FORBER

Height: 179cm Bust: 88cm Waist: 65cm Hips: 89cm Shoe: 7 UK Hair: Auburn Red Eyes: Green