

W MANAGEMENT

A Division Of Boss Models

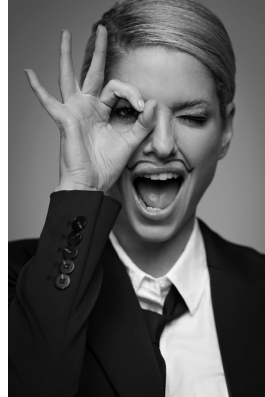


ANDREA ASHTON

Height: 174cm Bust: 86cm Waist: 68cm Hips: 92cm Shoe: 4 UK Hair: Blonde Eyes: Brown

W MANAGEMENT

A Division Of Boss Models



ANDREA ASHTON

Height: 174cm Bust: 86cm Waist: 68cm Hips: 92cm Shoe: 4 UK Hair: Blonde Eyes: Brown