

W MANAGEMENT

A Division Of Boss Models



CHRISTINA EVANS

Height: 182cm Bust: 92cm Waist: 75cm Hips: 101cm Shoe: 7.5 UK Hair: Brown Eyes: Brown

W MANAGEMENT

A Division Of Boss Models



CHRISTINA EVANS

Height: 182cm Bust: 92cm Waist: 75cm Hips: 101cm Shoe: 7.5 UK Hair: Brown Eyes: Brown

W MANAGEMENT

A Division Of Boss Models



RAINBOW CASHMERE

LASSEN SIE SICH VERFÜHREN!

RAINBOW CASHMERE steht für aktuelle, aber nicht kurzlebige Mode, vorsichtigen Umgang mit nachwachsenden Rohstoffen und nachhaltige und zertifizierte Produktion.

Weit davon entfernt, langweilig zu sein, ist RAINBOW CASHMERE lässig und elegant zugleich. „Must Haves“ für diesen und viele weitere Winterabende am Kaminfeuer.

RAINBOW CASHMERE ist wie eine sanfte Umarmung von einem Freund. Wählen Sie aus einer Kollektion von kuscheligen Twinsets, brandneuen Strickröcken, Rundhals- und sportlichen Rollkragenpullovern und treten Sie eine Welt voller Sensualität.

CHRISTINA EVANS

Height: 182cm Bust: 92cm Waist: 75cm Hips: 101cm Shoe: 7.5 UK Hair: Brown Eyes: Brown

W MANAGEMENT

A Division Of Boss Models



CHRISTINA EVANS

Height: 182cm Bust: 92cm Waist: 75cm Hips: 101cm Shoe: 7.5 UK Hair: Brown Eyes: Brown

W MANAGEMENT

A Division Of Boss Models



CHRISTINA EVANS

Height: 182cm Bust: 92cm Waist: 75cm Hips: 101cm Shoe: 7.5 UK Hair: Brown Eyes: Brown

W MANAGEMENT

A Division Of Boss Models



CHRISTINA EVANS

Height: 182cm Bust: 92cm Waist: 75cm Hips: 101cm Shoe: 7.5 UK Hair: Brown Eyes: Brown

W MANAGEMENT

A Division Of Boss Models



CHRISTINA EVANS

Height: 182cm Bust: 92cm Waist: 75cm Hips: 101cm Shoe: 7.5 UK Hair: Brown Eyes: Brown

W MANAGEMENT

A Division Of Boss Models



CHRISTINA EVANS

Height: 182cm Bust: 92cm Waist: 75cm Hips: 101cm Shoe: 7.5 UK Hair: Brown Eyes: Brown

W MANAGEMENT

A Division Of Boss Models



CHRISTINA EVANS

Height: 182cm Bust: 92cm Waist: 75cm Hips: 101cm Shoe: 7.5 UK Hair: Brown Eyes: Brown

W MANAGEMENT

A Division Of Boss Models



CHRISTINA EVANS

Height: 182cm Bust: 92cm Waist: 75cm Hips: 101cm Shoe: 7.5 UK Hair: Brown Eyes: Brown

W MANAGEMENT

A Division Of Boss Models

FEATURED SPREAD



SILVER | GOLD METALLIC BOLERO JACKET RUFF TUNG MESH
GOLD HAREM PANTS DIONNE AT ALCHYMIA BLUE | PINK BATHING CAPS CALLY
GOLD LACE UP STILETTO HEELS ZOOM GOLD HOOP EARRINGS FOREVER 21

ip.21

STYLE
Tonal trends/daring details/unique shapes

PHOTOGRAPHY: MARK CAMERON, FASHION EDITOR: BRITANY FARRERIE, HAIR AND MAKE UP: JACOTTY FARRERIE/PERSONAL MODEL: CHRISTINA EVANS

Get three looks for one with winter's versatile waterfall jacket (P20), achieve top-to-toe perfection with on-trend tonal dressing (P22) and express yourself with slogan tops and interesting details that command attention (P30).

Tune in to tonal dressing for an effortlessly polished look
power

KELSO COLOUR-BLOCK LONG CARDIGAN **8449.95**
KELSO BODYSUIT **8199**
KELSO BUTTON-DETAIL PENCIL SKIRT (MADE IN SA) **8249.95**
GUESS METALLIC STRAP WATCH **81995**

ACCESSOIRE: JASSEL FARRERIE, KELSO BODYSUIT (SET OF 3), **8495**

CHRISTINA EVANS

Height: 182cm Bust: 92cm Waist: 75cm Hips: 101cm Shoe: 7.5 UK Hair: Brown Eyes: Brown

W MANAGEMENT

A Division Of Boss Models

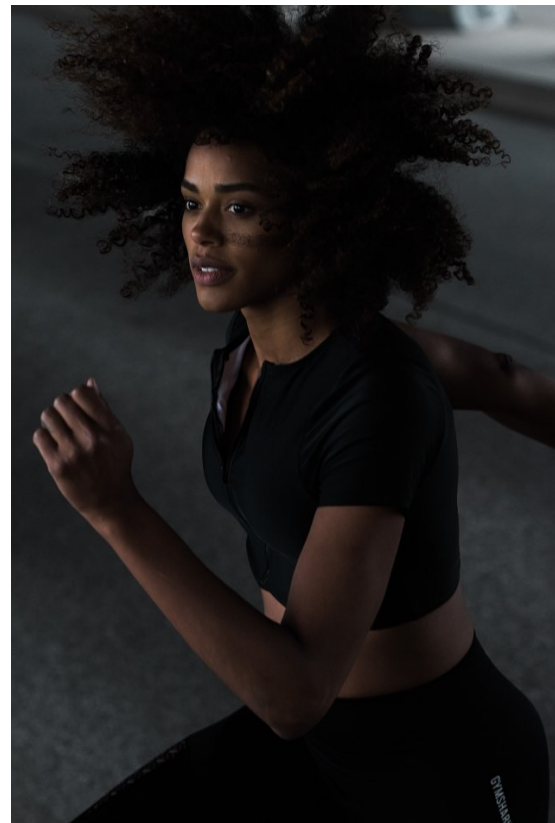


CHRISTINA EVANS

Height: 182cm Bust: 92cm Waist: 75cm Hips: 101cm Shoe: 7.5 UK Hair: Brown Eyes: Brown

W MANAGEMENT

A Division Of Boss Models



CHRISTINA EVANS

Height: 182cm Bust: 92cm Waist: 75cm Hips: 101cm Shoe: 7.5 UK Hair: Brown Eyes: Brown

W MANAGEMENT

A Division Of Boss Models



CHRISTINA EVANS

Height: 182cm Bust: 92cm Waist: 75cm Hips: 101cm Shoe: 7.5 UK Hair: Brown Eyes: Brown

W MANAGEMENT

A Division Of Boss Models



CHRISTINA EVANS

Height: 182cm Bust: 92cm Waist: 75cm Hips: 101cm Shoe: 7.5 UK Hair: Brown Eyes: Brown

W MANAGEMENT

A Division Of Boss Models



CHRISTINA EVANS

Height: 182cm Bust: 92cm Waist: 75cm Hips: 101cm Shoe: 7.5 UK Hair: Brown Eyes: Brown

W MANAGEMENT

A Division Of Boss Models



CHRISTINA EVANS

Height: 182cm Bust: 92cm Waist: 75cm Hips: 101cm Shoe: 7.5 UK Hair: Brown Eyes: Brown

W MANAGEMENT

A Division Of Boss Models



CHRISTINA EVANS

Height: 182cm Bust: 92cm Waist: 75cm Hips: 101cm Shoe: 7.5 UK Hair: Brown Eyes: Brown

W MANAGEMENT

A Division Of Boss Models



CHRISTINA EVANS

Height: 182cm Bust: 92cm Waist: 75cm Hips: 101cm Shoe: 7.5 UK Hair: Brown Eyes: Brown

W MANAGEMENT

A Division Of Boss Models



CHRISTINA EVANS

Height: 182cm Bust: 92cm Waist: 75cm Hips: 101cm Shoe: 7.5 UK Hair: Brown Eyes: Brown