

# W MANAGEMENT

*A Division Of Boss Models*



**ANITA OLCKERS**

Height: 172cm Bust: 86cm Waist: 62cm Hips: 92cm Shoe: 5 UK Hair: Dark Blonde Eyes: Green

# W MANAGEMENT

*A Division Of Boss Models*



## ANITA OLCKERS

Height: 172cm Bust: 86cm Waist: 62cm Hips: 92cm Shoe: 5 UK Hair: Dark Blonde Eyes: Green

# W MANAGEMENT

*A Division Of Boss Models*



## ANITA OLCKERS

Height: 172cm Bust: 86cm Waist: 62cm Hips: 92cm Shoe: 5 UK Hair: Dark Blonde Eyes: Green

# W MANAGEMENT

*A Division Of Boss Models*



SEDUCE YOURSELF! WHEN CHOOSING BASICS, PRIORITISE COMFORT – TRY OLD-FASHIONED VESTS AND LONG JOHNS IN PRETTY, SNUG FABRICS LIKE STRETCH, COTTON, SOFT KNITS AND MESH. BY RETHA JÜRGENS, PHOTOGRAPHY JOHAN WILKE

## *A perfect fit*

**ANITA OLCKERS**

Height: 172cm Bust: 86cm Waist: 62cm Hips: 92cm Shoe: 5 UK Hair: Dark Blonde Eyes: Green

# W MANAGEMENT

*A Division Of Boss Models*



HIERDIE BLADSY:  
HEMP R399,  
FOSCHINI  
ROMP  
R899, H&M  
SKOENE R399/99,  
THE FIX  
ORBELLE  
R250, LOVISA  
GORDEL R299,  
FOSCHINI  
HANDSAK R699,  
FOSCHINI  
SONBRIL R1 640,  
LUXOTTICA

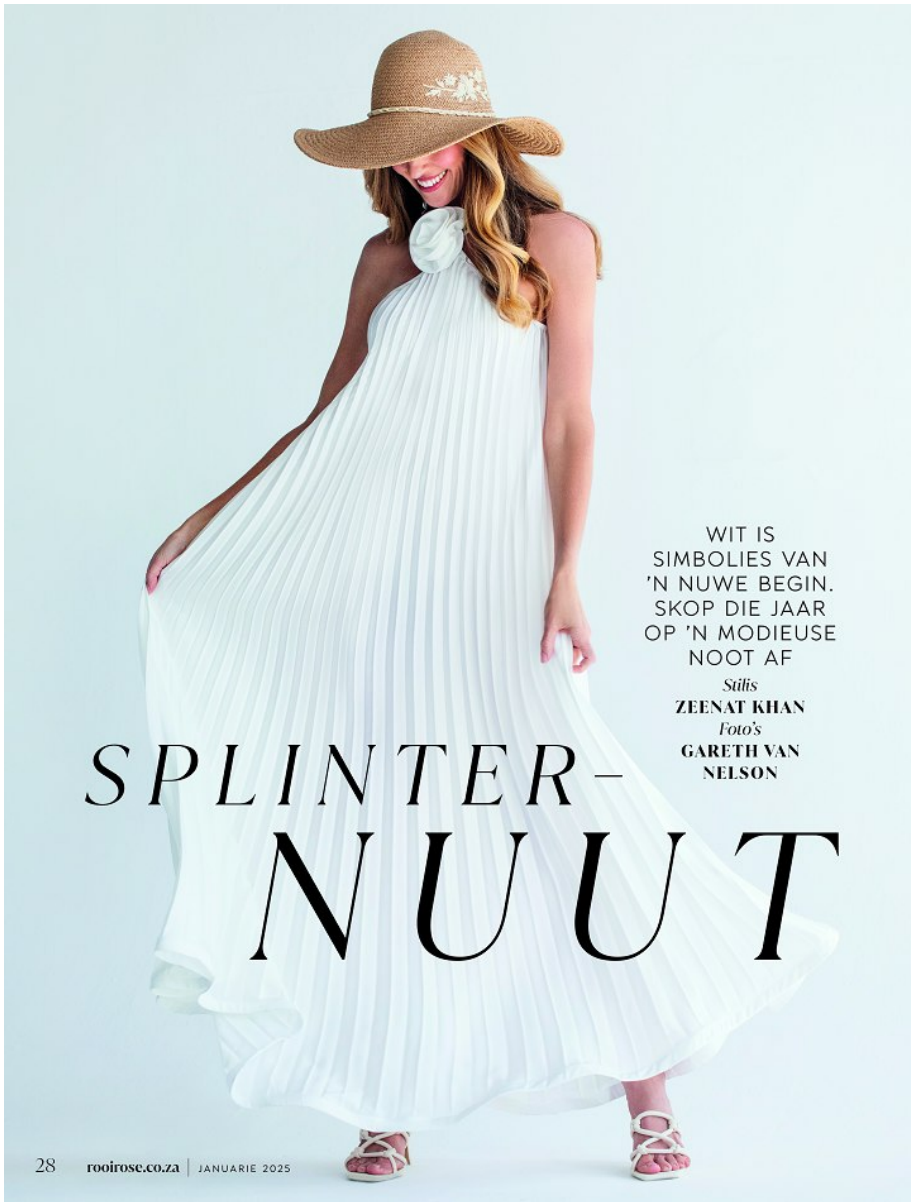
VORIGE BLADSY:  
ONDERBAADJIE  
R679, ZARA  
BROEK R1 299,  
FOREVER NEW  
SKOENE R329/99  
EDGARS  
ARBAND R290,  
LOVISA  
ORBELLE R300,  
LOVISA

## ANITA OLCKERS

Height: 172cm Bust: 86cm Waist: 62cm Hips: 92cm Shoe: 5 UK Hair: Dark Blonde Eyes: Green

# W MANAGEMENT

A Division Of Boss Models

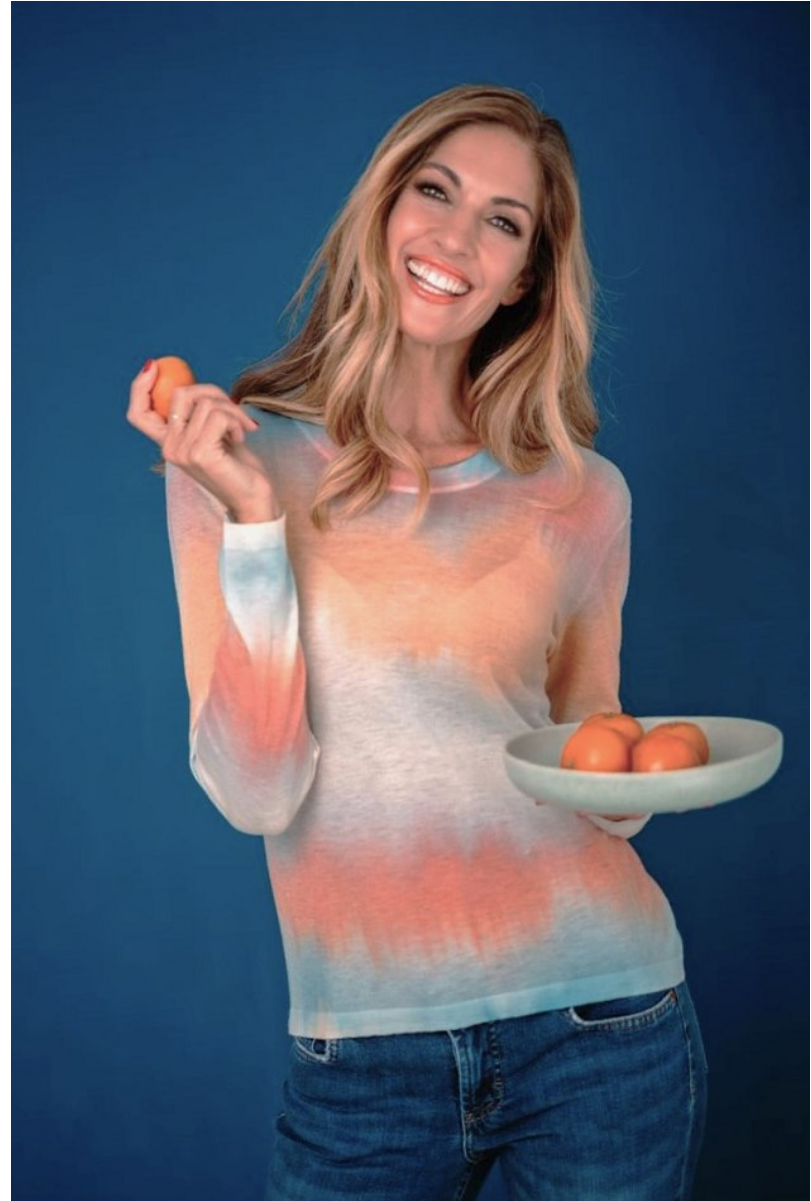


## ANITA OLCKERS

Height: 172cm Bust: 86cm Waist: 62cm Hips: 92cm Shoe: 5 UK Hair: Dark Blonde Eyes: Green

# W MANAGEMENT

*A Division Of Boss Models*



**ANITA OLCKERS**

Height: 172cm Bust: 86cm Waist: 62cm Hips: 92cm Shoe: 5 UK Hair: Dark Blonde Eyes: Green

# W MANAGEMENT

*A Division Of Boss Models*



**ANITA OLCKERS**

Height: 172cm Bust: 86cm Waist: 62cm Hips: 92cm Shoe: 5 UK Hair: Dark Blonde Eyes: Green



# W MANAGEMENT

*A Division Of Boss Models*



**ANITA OLCKERS**

Height: 172cm Bust: 86cm Waist: 62cm Hips: 92cm Shoe: 5 UK Hair: Dark Blonde Eyes: Green

# W MANAGEMENT

*A Division Of Boss Models*



## ANITA OLCKERS

Height: 172cm Bust: 86cm Waist: 62cm Hips: 92cm Shoe: 5 UK Hair: Dark Blonde Eyes: Green

# W MANAGEMENT

*A Division Of Boss Models*



## ANITA OLCKERS

Height: 172cm Bust: 86cm Waist: 62cm Hips: 92cm Shoe: 5 UK Hair: Dark Blonde Eyes: Green

# W MANAGEMENT

*A Division Of Boss Models*



## ANITA OLCKERS

Height: 172cm Bust: 86cm Waist: 62cm Hips: 92cm Shoe: 5 UK Hair: Dark Blonde Eyes: Green

# W MANAGEMENT

A Division Of Boss Models



## ANITA OLCKERS

Height: 172cm Bust: 86cm Waist: 62cm Hips: 92cm Shoe: 5 UK Hair: Dark Blonde Eyes: Green

# W MANAGEMENT

*A Division Of Boss Models*



**ANITA OLCKERS**

Height: 172cm Bust: 86cm Waist: 62cm Hips: 92cm Shoe: 5 UK Hair: Dark Blonde Eyes: Green

# W MANAGEMENT

*A Division Of Boss Models*



## ANITA OLCKERS

Height: 172cm Bust: 86cm Waist: 62cm Hips: 92cm Shoe: 5 UK Hair: Dark Blonde Eyes: Green

# W MANAGEMENT

A Division Of Boss Models



get the look

Who says short-sleeve knits aren't chic? Just choose one with glam detailing and layer over delicate fabrics and pants in a strong print.

Top: R470, Jo Borkett; Knit: R69.99, Mr Price; Pants: R350, Truworths; Necklace: R40, Foschini; Bag: R149.99, Mr Price; Bracelet: R220, Stuttafords.

Designer lookalike bag - only R150!

**tip** Try mixing tweed with delicate knits for a 'right now' look.

essentials 13

## ANITA OLCKERS

Height: 172cm Bust: 86cm Waist: 62cm Hips: 92cm Shoe: 5 UK Hair: Dark Blonde Eyes: Green



# W MANAGEMENT

*A Division Of Boss Models*



**ANITA OLCKERS**

Height: 172cm Bust: 86cm Waist: 62cm Hips: 92cm Shoe: 5 UK Hair: Dark Blonde Eyes: Green

# W MANAGEMENT

*A Division Of Boss Models*



## ANITA OLCKERS

Height: 172cm Bust: 86cm Waist: 62cm Hips: 92cm Shoe: 5 UK Hair: Dark Blonde Eyes: Green

# W MANAGEMENT

*A Division Of Boss Models*



**ANITA OLCKERS**

Height: 172cm Bust: 86cm Waist: 62cm Hips: 92cm Shoe: 5 UK Hair: Dark Blonde Eyes: Green

# W MANAGEMENT

*A Division Of Boss Models*



## ANITA OLCKERS

Height: 172cm Bust: 86cm Waist: 62cm Hips: 92cm Shoe: 5 UK Hair: Dark Blonde Eyes: Green

# W MANAGEMENT

*A Division Of Boss Models*



**ANITA OLCKERS**

Height: 172cm Bust: 86cm Waist: 62cm Hips: 92cm Shoe: 5 UK Hair: Dark Blonde Eyes: Green

# W MANAGEMENT

*A Division Of Boss Models*



**ANITA OLCKERS**

Height: 172cm Bust: 86cm Waist: 62cm Hips: 92cm Shoe: 5 UK Hair: Dark Blonde Eyes: Green

# W MANAGEMENT

*A Division Of Boss Models*



**ANITA OLCKERS**

Height: 172cm Bust: 86cm Waist: 62cm Hips: 92cm Shoe: 5 UK Hair: Dark Blonde Eyes: Green

# W MANAGEMENT

*A Division Of Boss Models*



**ANITA OLCKERS**

Height: 172cm Bust: 86cm Waist: 62cm Hips: 92cm Shoe: 5 UK Hair: Dark Blonde Eyes: Green



# W MANAGEMENT

*A Division Of Boss Models*



**ANITA OLCKERS**

Height: 172cm Bust: 86cm Waist: 62cm Hips: 92cm Shoe: 5 UK Hair: Dark Blonde Eyes: Green

# W MANAGEMENT

*A Division Of Boss Models*



**ANITA OLCKERS**

Height: 172cm Bust: 86cm Waist: 62cm Hips: 92cm Shoe: 5 UK Hair: Dark Blonde Eyes: Green