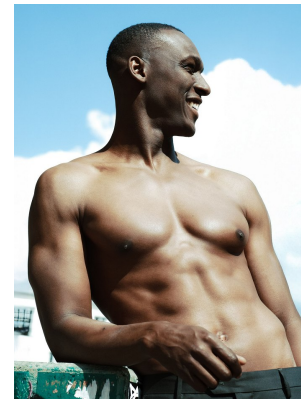
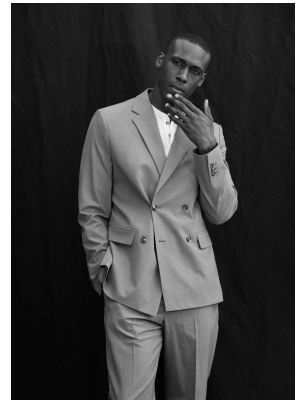


BOSS MODELS

CAPE TOWN

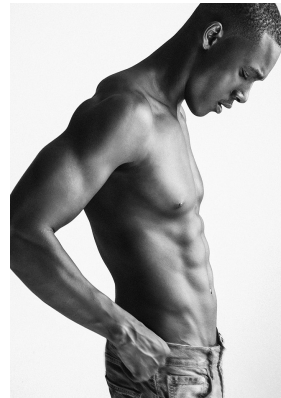
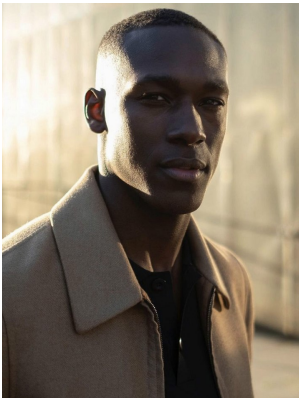


EMMANUEL AMORIN

Height: 188cm Chest: 98cm Waist: 82cm Suit: 38.5 R Shoe: 10.5 UK Hair: Black Eyes: Brown

BOSS MODELS

CAPE TOWN

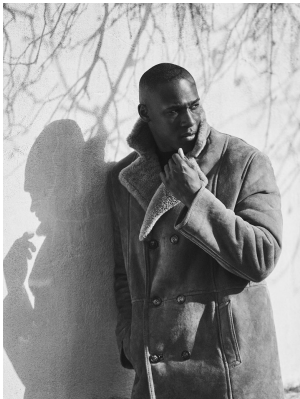
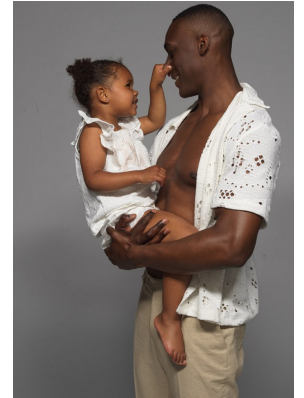
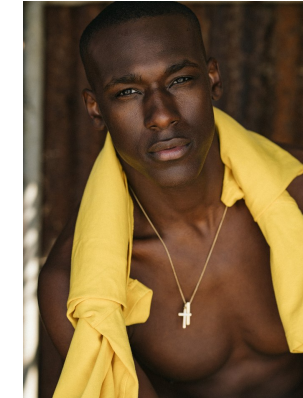
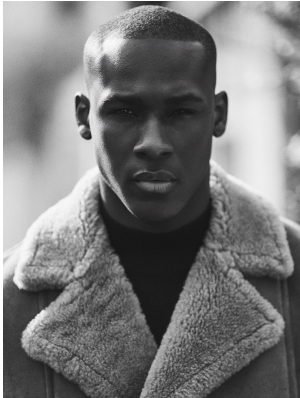


EMMANUEL AMORIN

Height: 188cm Chest: 98cm Waist: 82cm Suit: 38.5 R Shoe: 10.5 UK Hair: Black Eyes: Brown

BOSS MODELS

CAPE TOWN



EMMANUEL AMORIN

Height: 188cm Chest: 98cm Waist: 82cm Suit: 38.5 R Shoe: 10.5 UK Hair: Black Eyes: Brown