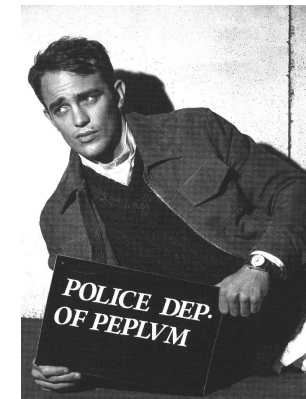


BOSS MODELS

CAPE TOWN

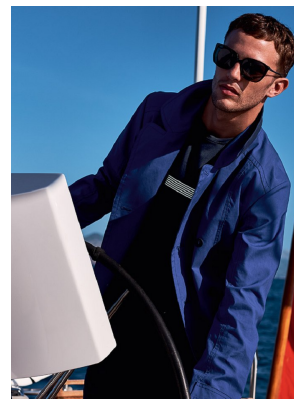


GUILLAUME BABOUIN

Height: 186cm Chest: 93cm Waist: 74cm Suit: 38 R Shoe: 9.5 UK Hair: Light Brown Eyes: Blue/Green

BOSS MODELS

CAPE TOWN

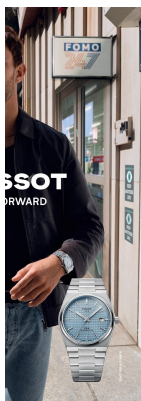
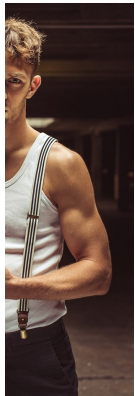


GUILLAUME BABOUIN

Height: 186cm Chest: 93cm Waist: 74cm Suit: 38 R Shoe: 9.5 UK Hair: Light Brown Eyes: Blue/Green

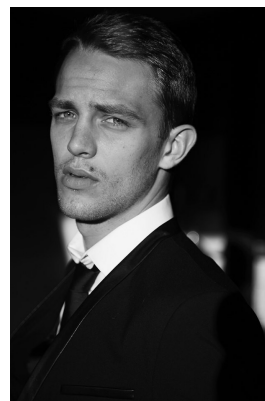
BOSS MODELS

CAPE TOWN



Guillaume collabora con il fotografo e regista Francesco Carrozzini, direttore artistico di Vogue Italia e Guiltless.

Le Monde 27/01/12 novembre 2011, 109



GUILLAUME BABOUIN

Height: 186cm Chest: 93cm Waist: 74cm Suit: 38 R Shoe: 9.5 UK Hair: Light Brown Eyes: Blue/Green