

# BOSS MODELS

CAPE TOWN



EDGE LHEUREUX

Height: 186cm Chest: 99cm Waist: 76cm Shoe: 9.5 UK Hair: Black Eyes: Brown



# BOSS MODELS

CAPE TOWN



## EDGE LHEUREUX

Height: 186cm Chest: 99cm Waist: 76cm Shoe: 9.5 UK Hair: Black Eyes: Brown



# BOSS MODELS

CAPE TOWN

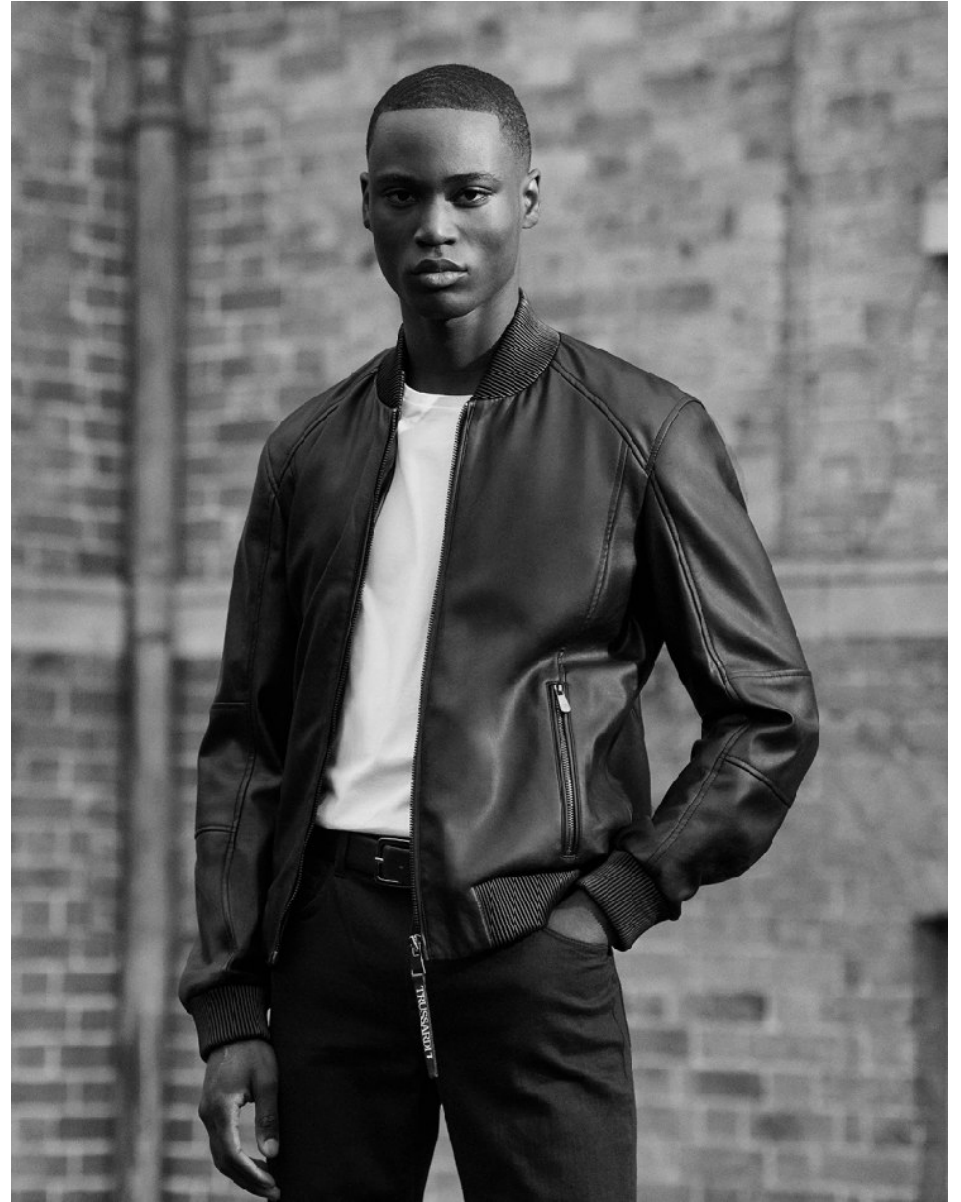


EDGE LHEUREUX

Height: 186cm Chest: 99cm Waist: 76cm Shoe: 9.5 UK Hair: Black Eyes: Brown

# BOSS MODELS

CAPE TOWN



## EDGE LHEUREUX

Height: 186cm Chest: 99cm Waist: 76cm Shoe: 9.5 UK Hair: Black Eyes: Brown



# BOSS MODELS

CAPE TOWN



EDGE LHEUREUX

Height: 186cm Chest: 99cm Waist: 76cm Shoe: 9.5 UK Hair: Black Eyes: Brown



# BOSS MODELS

CAPE TOWN



EDGE LHEUREUX

Height: 186cm Chest: 99cm Waist: 76cm Shoe: 9.5 UK Hair: Black Eyes: Brown



## CAPE TOWN

Barrett's philosophy is that the more things you do, the better you know what you like, and the better you know what you like, the better you know what to do. In other words, about the searching of a minimalist life. A minimalist life, which is characterized with creative and stress free, a free-morality, of shadow and light, the balance of a life with the same intelligent, elegant modernism as Barrett's designs: "It's a huge achievement for me," he agrees. But has his latest work in inherently stylish rock, given Barrett cause for thinking retrospectively, for enjoying a little mid-career nostalgia?

"I do look back at myself all the time," he admits, barely emphasizing, "It's not because I'm nostalgic contemplating what I've done, but quite the contrary. I do it because I want to improve on what I did. I want to look back on what I've done and see if I can make it better...This is because I'm a perfectionist. And looking back is, to me, super interesting and super inspiring because I'm constantly wanting to make things better."

It's that Sisyphæan insistence on perfection that means, whether it's his recently launched footwear line, Blackbarrett, or his decision to finally tackle florals head on for SS19 (a tall order for a man of his minimalist temperaments), Barrett's work is never really done. After all, what

he has in mind is *never* simply a good collection of clothes to sell each season but, instead, nothing less than the contemporary male wardrobe in its ideal form. That means a constant struggle not just to work on the pieces he hasn't yet tackled — "I've got to find another area that I don't work on usually to try and put it into my DNA" — but to reappraise and reevaluate those he already has. A garment that ten years ago embodied his ethos, to "explore the realms of menswear and push those boundaries but still stay within them," might fall short today; as menswear's boundaries shift, so too must Barrett's.

For most designers, that sense of circularity would make Barrett's methodology terrifying: an unending quest to perfect that which can never be truly perfected. Not for long, anyhow. By the time the man himself, that process is, perversely, what satisfaction feels like. "That is my total pleasure and I am my own biggest critic. And that's what drives me on in life," he chuckles, before adding, "though it's not the best thing for my partner, I must say!" Never mind. There's always a price to perfection.

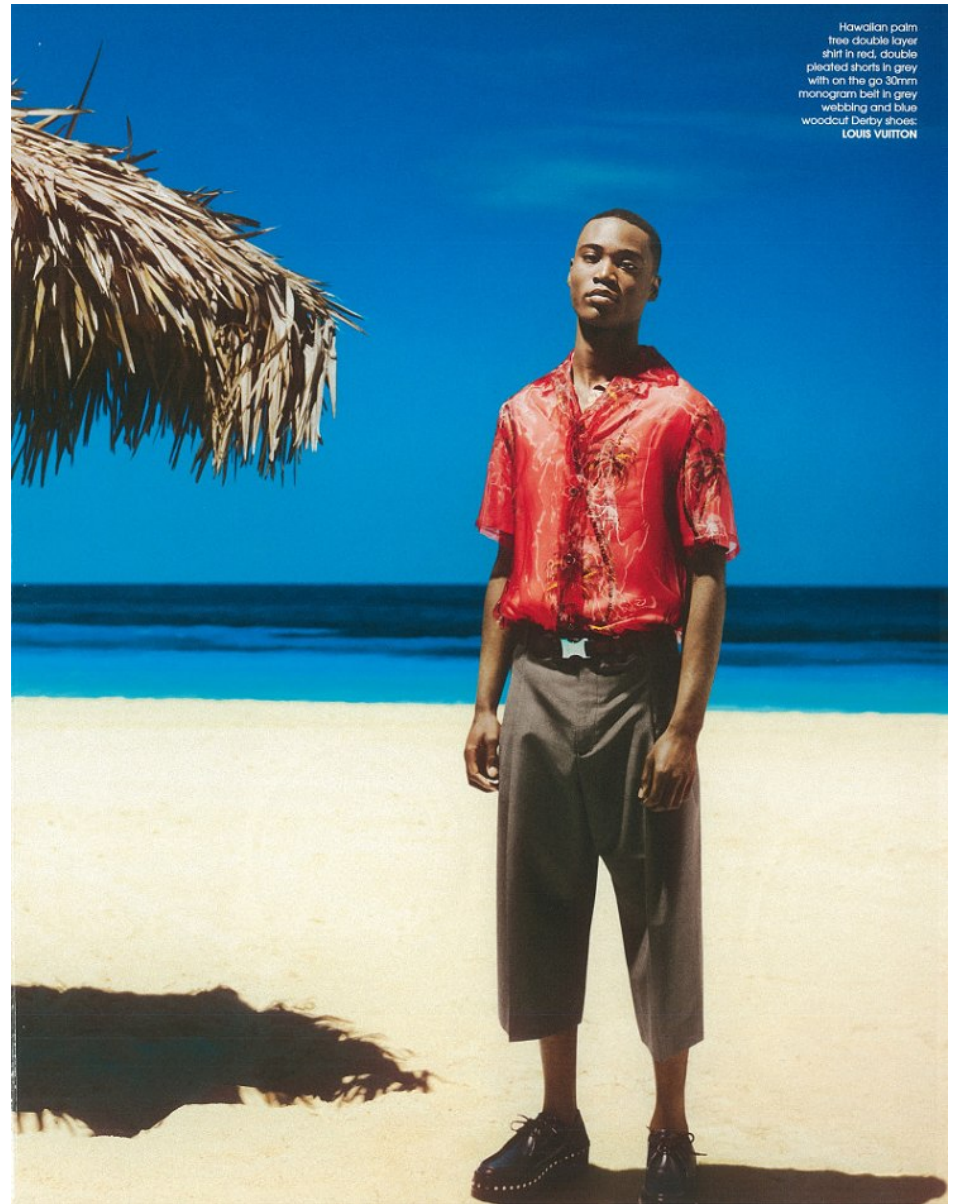


Height: 186cm Chest: 99cm Waist: 76cm Shoe: 9.5 UK Hair: Black Eyes: Brown



# BOSS MODELS

CAPE TOWN



EDGE LHEUREUX

Height: 186cm Chest: 99cm Waist: 76cm Shoe: 9.5 UK Hair: Black Eyes: Brown



# BOSS MODELS

CAPE TOWN



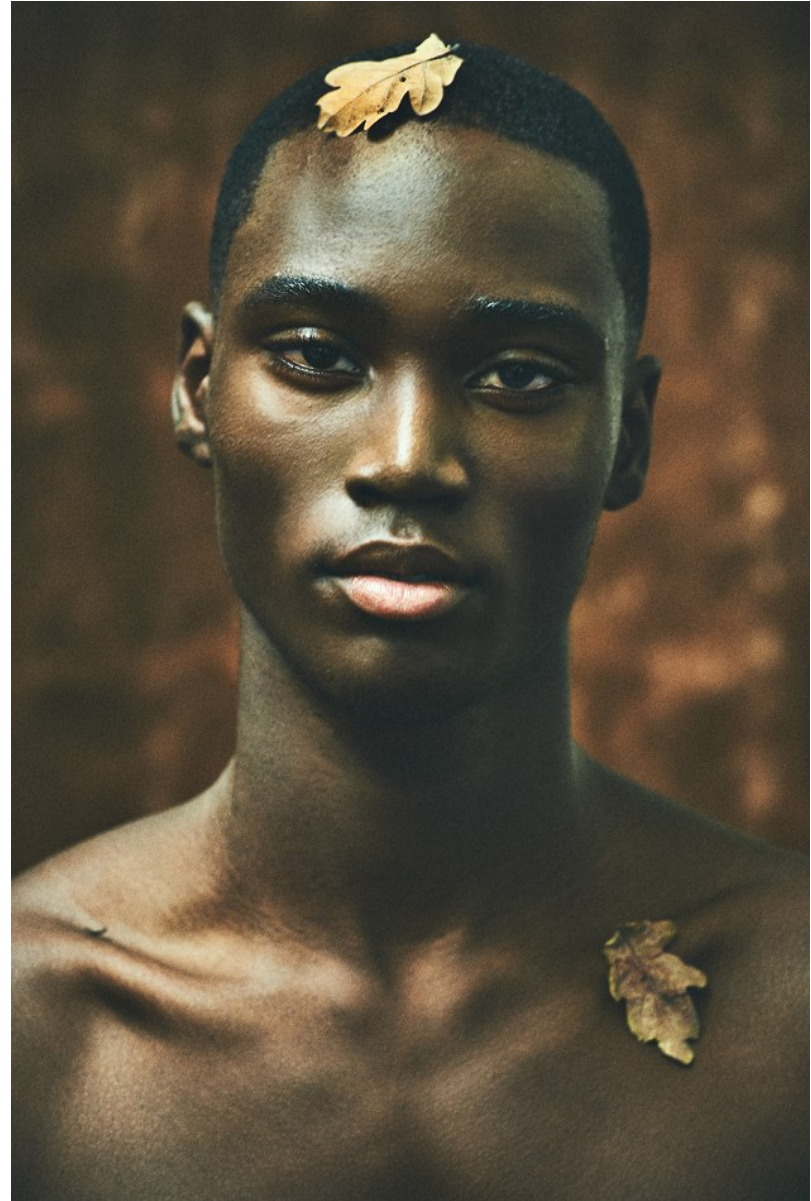
EDGE LHEUREUX

Height: 186cm Chest: 99cm Waist: 76cm Shoe: 9.5 UK Hair: Black Eyes: Brown



# BOSS MODELS

CAPE TOWN



EDGE LHEUREUX

Height: 186cm Chest: 99cm Waist: 76cm Shoe: 9.5 UK Hair: Black Eyes: Brown



# BOSS MODELS

CAPE TOWN



EDGE LHEUREUX

Height: 186cm Chest: 99cm Waist: 76cm Shoe: 9.5 UK Hair: Black Eyes: Brown



# BOSS MODELS

CAPE TOWN



EDGE LHEUREUX

Height: 186cm Chest: 99cm Waist: 76cm Shoe: 9.5 UK Hair: Black Eyes: Brown



# BOSS MODELS

CAPE TOWN



## EDGE LHEUREUX

Height: 186cm Chest: 99cm Waist: 76cm Shoe: 9.5 UK Hair: Black Eyes: Brown



# BOSS MODELS

CAPE TOWN



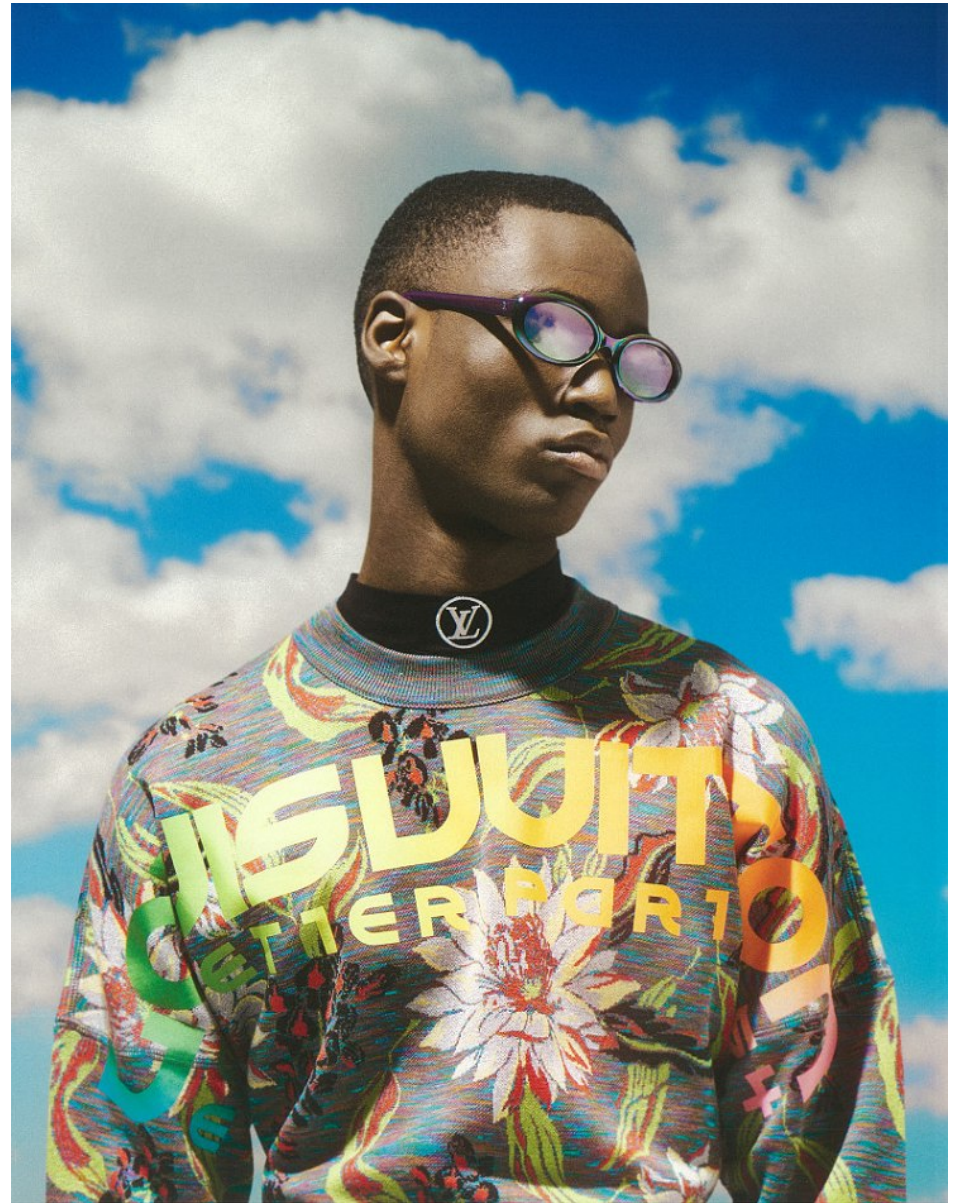
EDGE LHEUREUX

Height: 186cm Chest: 99cm Waist: 76cm Shoe: 9.5 UK Hair: Black Eyes: Brown



# BOSS MODELS

CAPE TOWN



EDGE LHEUREUX

Height: 186cm Chest: 99cm Waist: 76cm Shoe: 9.5 UK Hair: Black Eyes: Brown



# BOSS MODELS

CAPE TOWN



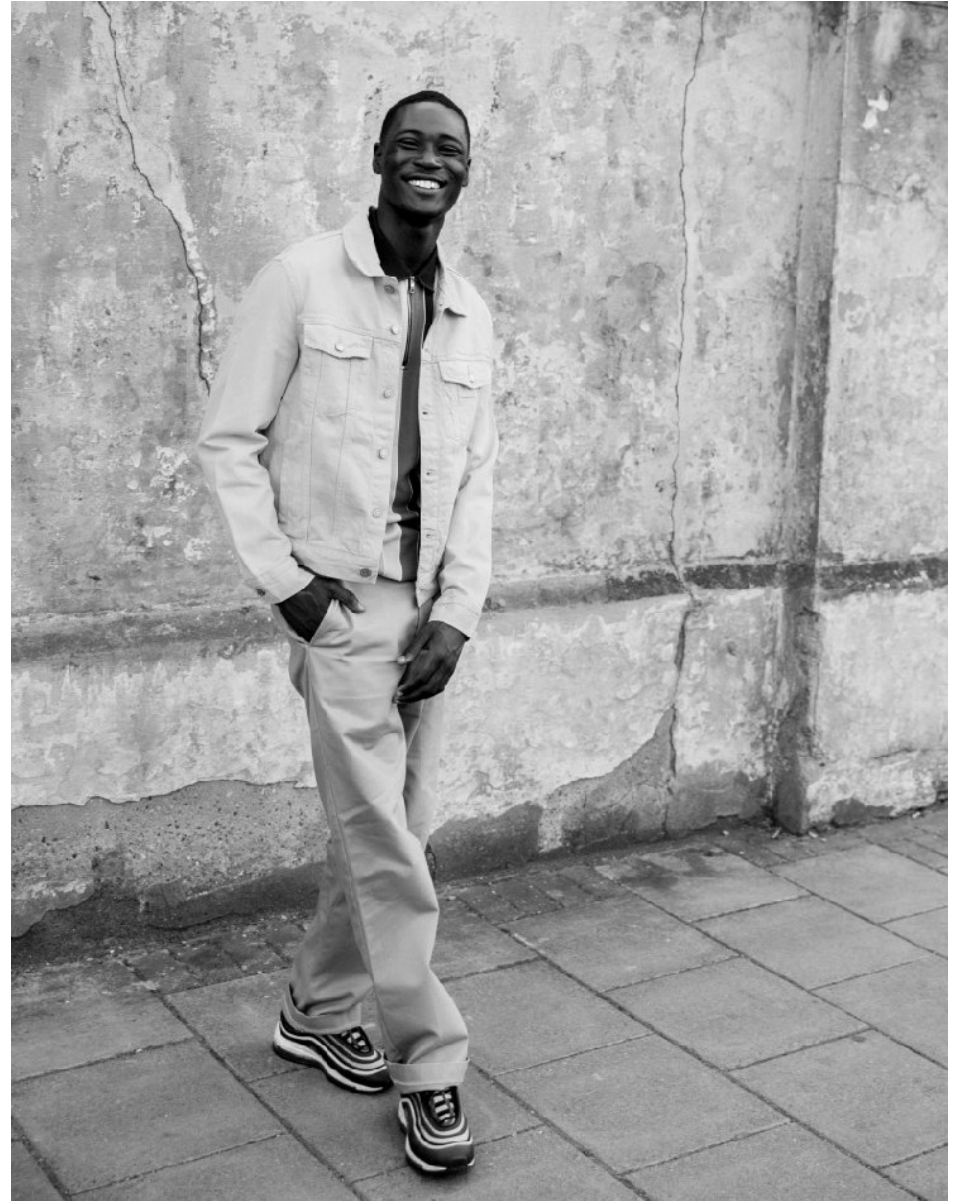
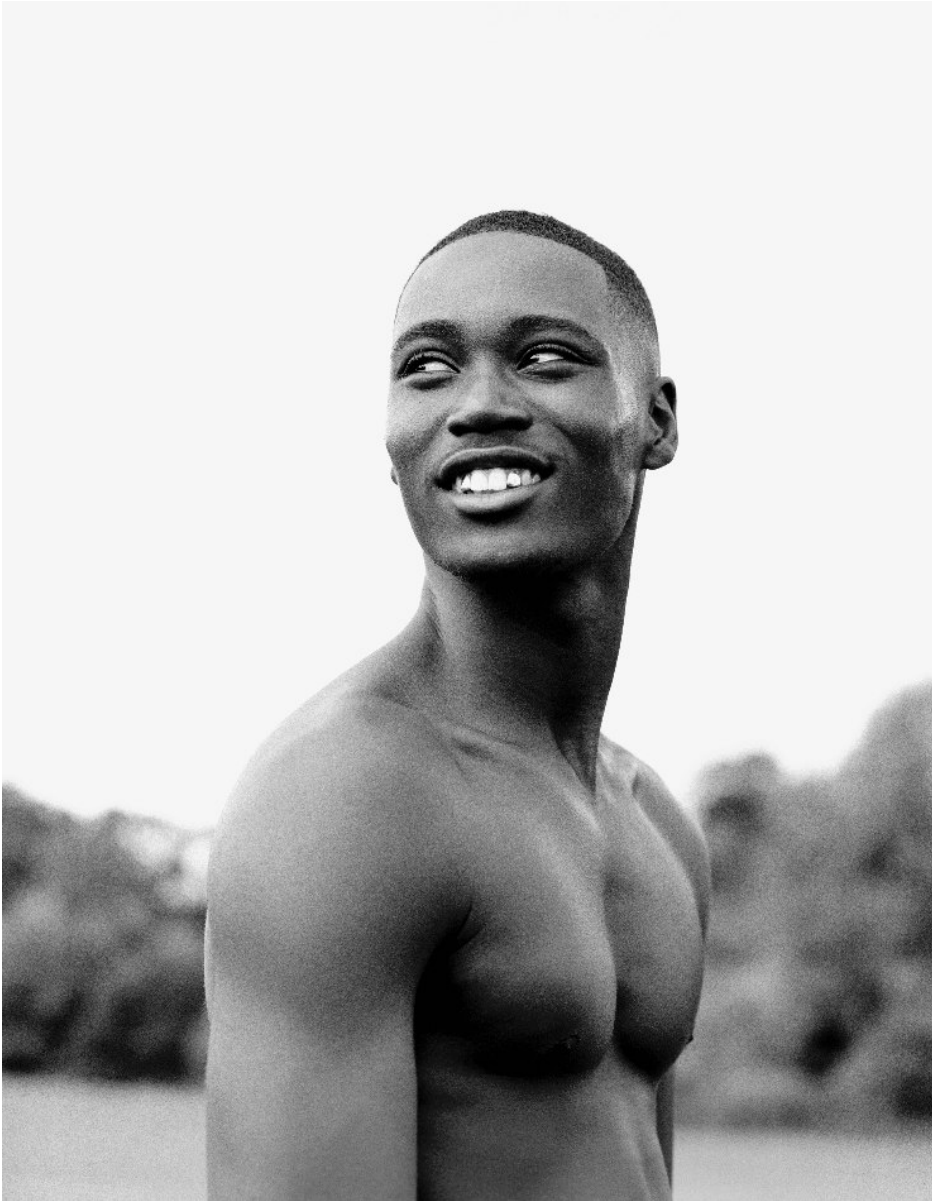
EDGE LHEUREUX

Height: 186cm Chest: 99cm Waist: 76cm Shoe: 9.5 UK Hair: Black Eyes: Brown



# BOSS MODELS

CAPE TOWN



EDGE LHEUREUX

Height: 186cm Chest: 99cm Waist: 76cm Shoe: 9.5 UK Hair: Black Eyes: Brown



# BOSS MODELS

CAPE TOWN



EDGE LHEUREUX

Height: 186cm Chest: 99cm Waist: 76cm Shoe: 9.5 UK Hair: Black Eyes: Brown

# BOSS MODELS

CAPE TOWN



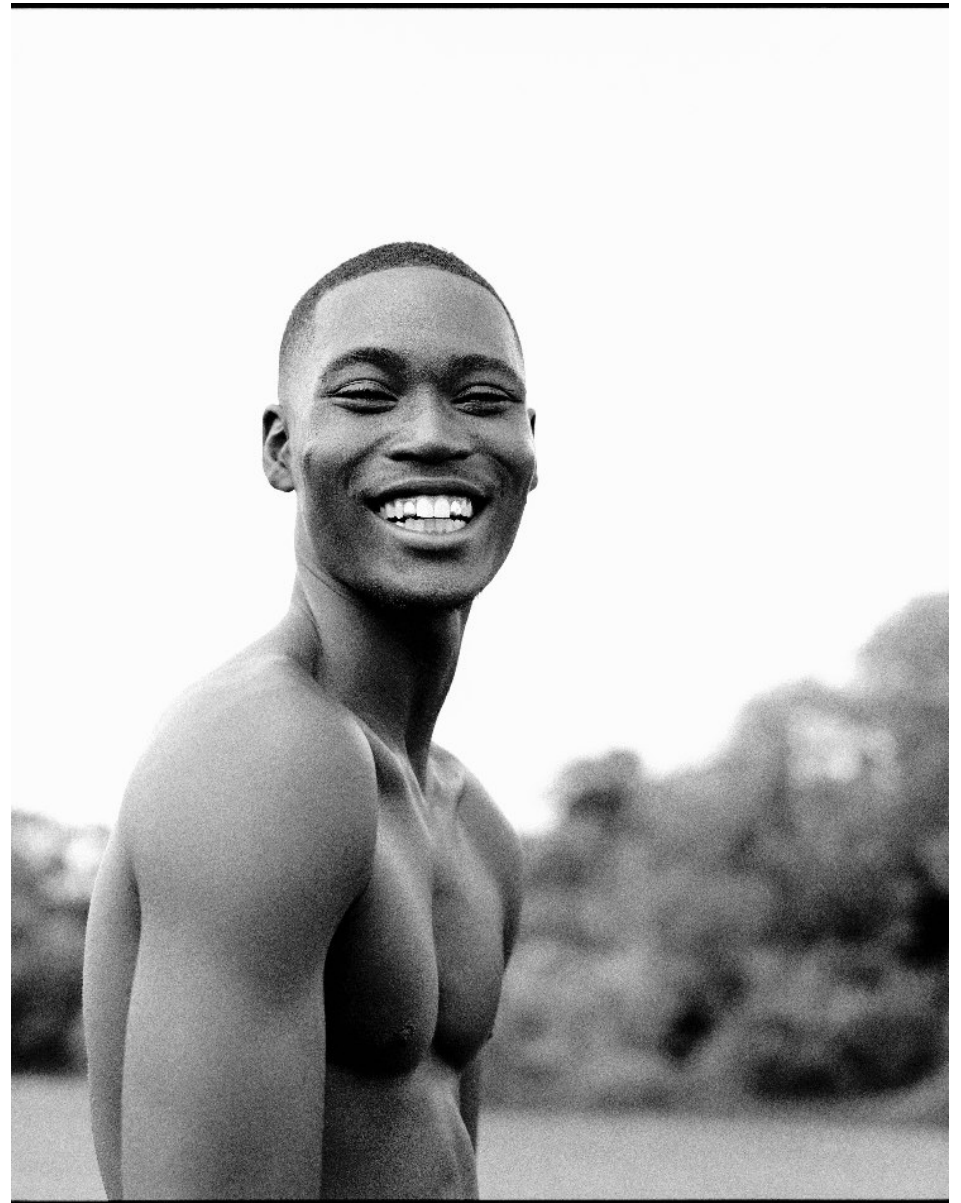
EDGE LHEUREUX

Height: 186cm Chest: 99cm Waist: 76cm Shoe: 9.5 UK Hair: Black Eyes: Brown



# BOSS MODELS

CAPE TOWN



EDGE LHEUREUX

Height: 186cm Chest: 99cm Waist: 76cm Shoe: 9.5 UK Hair: Black Eyes: Brown



# BOSS MODELS

CAPE TOWN



EDGE LHEUREUX

Height: 186cm Chest: 99cm Waist: 76cm Shoe: 9.5 UK Hair: Black Eyes: Brown



# BOSS MODELS

CAPE TOWN



EDGE LHEUREUX

Height: 186cm Chest: 99cm Waist: 76cm Shoe: 9.5 UK Hair: Black Eyes: Brown