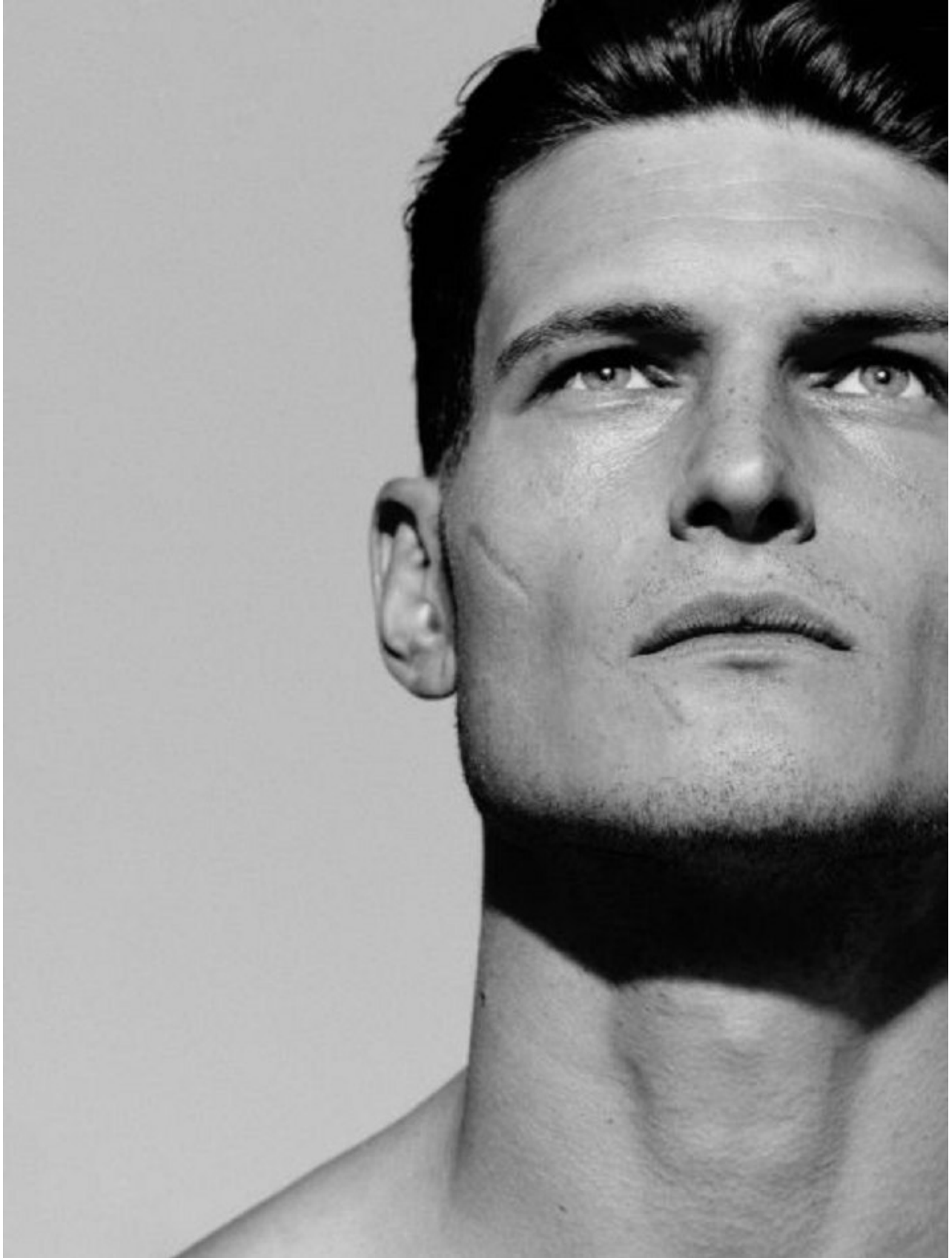


BOSS MODELS

CAPE TOWN



JOHN TODD

Height: 195cm Chest: 99cm Waist: 79cm Suit: 40 L Shoe: 10.5 UK Hair: Brown Eyes: Blue

BOSS MODELS

CAPE TOWN

don't settle for anything less than everything

TEXT STEVE SALTER
PHOTOGRAPHY SCOTT TRINDLE
STYLING ELGAR JOHNSON

Hair Tina Outen at Streeters
Make-up Lauren Parsons at Premier Hair and Make-up
Photography assistance Mark Simpson, Richard Plinick
Digital operator Neil Pemberton
Styling assistance Warren Leech
Production F32 Productions
Casting Thomas Jibogun
Models Nouk at IMG, John at Next

Nouk and John wear all clothing HUGO.
All jewellery stylist's own.

As HUGO blew out twenty candles with a bang in Berlin, we swoon for the rebel with a cause.

Turning twenty this year, HUGO began 2013 in a celebratory yet considered mood with a presentation and after party in the heart of Berlin. Previously a location where painters, metalworkers, carpenters and sculptors combined to create vast sets for the capital's opera houses, Berlin's former Opernwerkstätten provided yet another spellbinding backdrop for the parade of HUGO's 'Reflection' for autumn/winter 13.

Before the vast industrial space was swarmed with 800 birthday well wishers and Mercedes-Benz Fashion Week revelers coming together to dance late into the night, a quiet hush descended and hung over the industrial setting as the HUGO design duo of Eyan Allen and Bart De Backer held up a mirror and the star studded, international audience was left captivated by the inviting image of HUGO's past, present and future.

On reaching such a landmark as the big 2-0, De Backer and Allen would have been forgiven had they purely presented a greatest hits of HUGO menswear and womenswear from seasons past. However, rather than release another nostalgic 'best of' collection, the talented twosome treated us to a foot tappingly good sartorial remix that focused in on a harmony of unique surfaces, a melody of innovative details and a beat of the freshest silhouettes. "I didn't only look at the history of HUGO, I was particularly interested in the history of menswear in general and seeing what makes a piece iconic," Bart de Backer excitedly exclaimed backstage. "The biker style of Marlon Brando from the 50s is widely known and admired, here we updated his iconic jacket with the combination of wool with leather applications and silver zip detailing to offer a new, contemporary feel." This same playlist of modernity was softly echoed in its own soft tones in the womenswear. "I wanted the collection to feel discernibly modern through a combination of innovation and freshness," added Allen backstage before being washed away by a tidal wave of congratulations.

Both the menswear and womenswear collections revelled in duality. Each danced between past and future, nostalgia and novelty, tradition and innovation, their fancy footwork and confident grace blurring any lines of distinction. Ultimately, despite the odd fond look back, the gaze of HUGO is firmly focussed on the future, excited by the possibilities of what follows which is an ideal attitude for a twenty-year-old to take. "At twenty, I was terribly difficult, a rebel," Allen admitted in the midst of the backstage controlled chaos of A-list celebrity interviews and transforming models. "Sophisticated rebel," is how De Backer succinctly described HUGO at twenty. Whereas most twenty-year-olds are in the process of finding themselves, there's a justifiable confidence to HUGO who knows exactly who it is and where it wants to go. Here's to an exciting future with the sophisticated rebel. hugoboss.com

JOHN TODD

Height: 195cm Chest: 99cm Waist: 79cm Suit: 40 L Shoe: 10.5 UK Hair: Brown Eyes: Blue

BOSS MODELS

CAPE TOWN



**BURBERRY
PRORSUM**
MANTEL
2 500 EURO
HOSE
600 EURO
TANKTOP
250 EURO
SCHAL
525 EURO
BROGUES
525 EURO

STRÖMPFE
FALKE, 30 EURO



**BOTTEGA
VENETA**
SAKKO
1 800 EURO
HEMD
680 EURO
MÜTZE
390 EURO

September 2014 — GQ DE 171

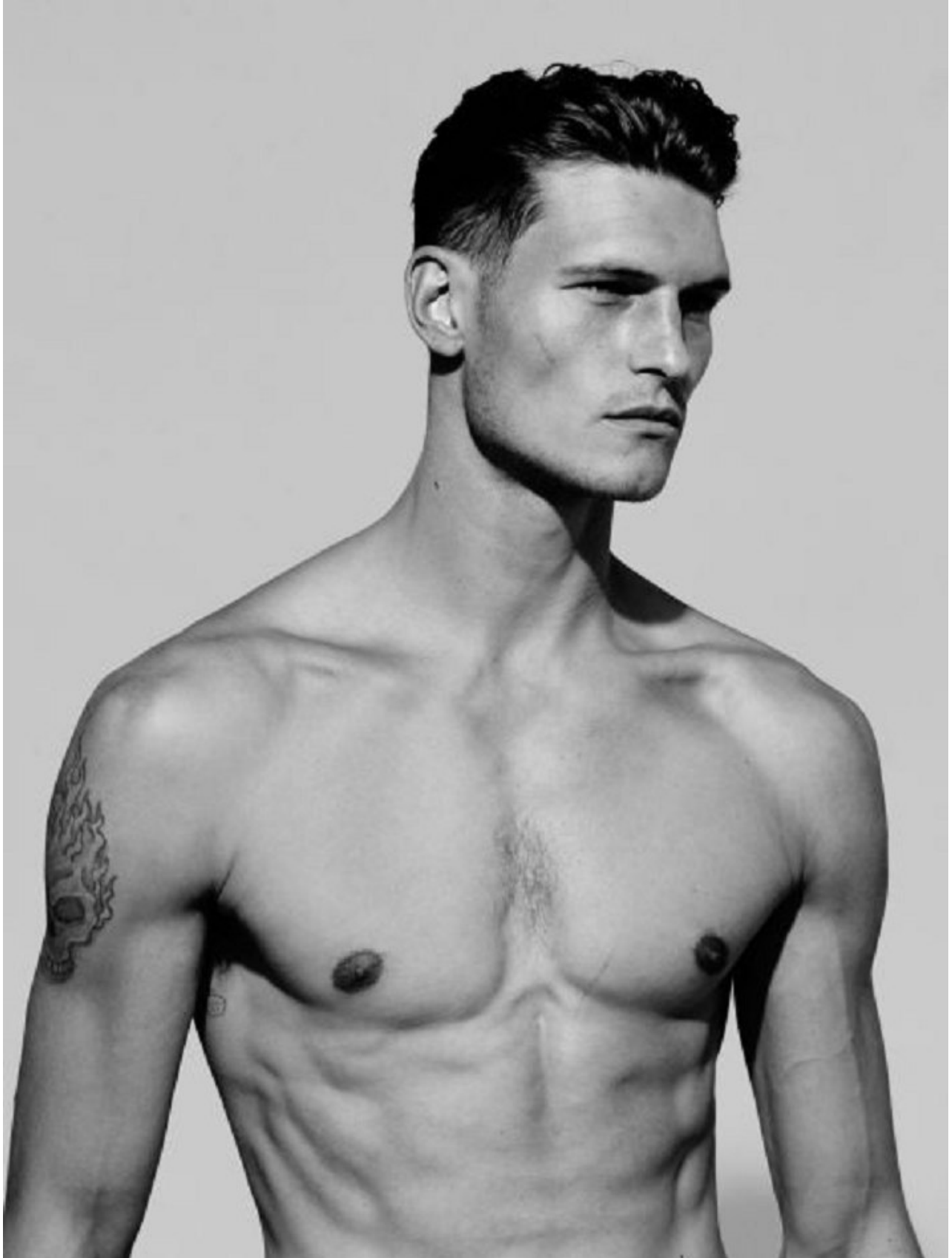
GQ GERMAN

JOHN TODD

Height: 195cm Chest: 99cm Waist: 79cm Suit: 40 L Shoe: 10.5 UK Hair: Brown Eyes: Blue

BOSS MODELS

CAPE TOWN



JOHN TODD

Height: 195cm Chest: 99cm Waist: 79cm Suit: 40 L Shoe: 10.5 UK Hair: Brown Eyes: Blue

BOSS MODELS

CAPE TOWN

左图：黑色荷兰羊羔绒大衣，DOLCE & GABBANA。双筒粗线帆布长短裤，PUBLIC SCHOOL。黑色棉质内裤，EMPORIO ARMANI。韩质运动短袜，NIKE。银色吊坠项链，TIFFANY & CO。18K 黄金手链，LAZARO。右图：灰色羔羊皮大衣，DIOR HOMME。



JOHN TODD

Height: 195cm Chest: 99cm Waist: 79cm Suit: 40 L Shoe: 10.5 UK Hair: Brown Eyes: Blue

BOSS MODELS

CAPE TOWN



JOHN TODD

Height: 195cm Chest: 99cm Waist: 79cm Suit: 40 L Shoe: 10.5 UK Hair: Brown Eyes: Blue

BOSS MODELS

CAPE TOWN



JOHN TODD

Height: 195cm Chest: 99cm Waist: 79cm Suit: 40 L Shoe: 10.5 UK Hair: Brown Eyes: Blue

BOSS MODELS

CAPE TOWN



GQ **Style**
THE DEFINITIVE GUIDE TO MEN'S FASHION

GENTLEMEN'S QUARTERLY
UK £6
INTERNATIONAL £6.50

Youthquake!
Bailey's
Poseurs
Provocateurs
And
Pin-ups
Portfolio

Disclosure
The Sound
Of The City!

Sam Claflin
Blows Up!

Capital Style
London
Collections: Men

+
Why Rick
Owens Is
The Talk Of
The Town



John Todd photographed for GQ Style by John Balsom

Get The London Look

THE LONDON
ISSUE **AW14**

JOHN TODD

Height: 195cm Chest: 99cm Waist: 79cm Suit: 40 L Shoe: 10.5 UK Hair: Brown Eyes: Blue

BOSS MODELS

CAPE TOWN



JOHN TODD

Height: 195cm Chest: 99cm Waist: 79cm Suit: 40 L Shoe: 10.5 UK Hair: Brown Eyes: Blue

BOSS MODELS

CAPE TOWN



JOHN TODD

Height: 195cm Chest: 99cm Waist: 79cm Suit: 40 L Shoe: 10.5 UK Hair: Brown Eyes: Blue

BOSS MODELS

CAPE TOWN

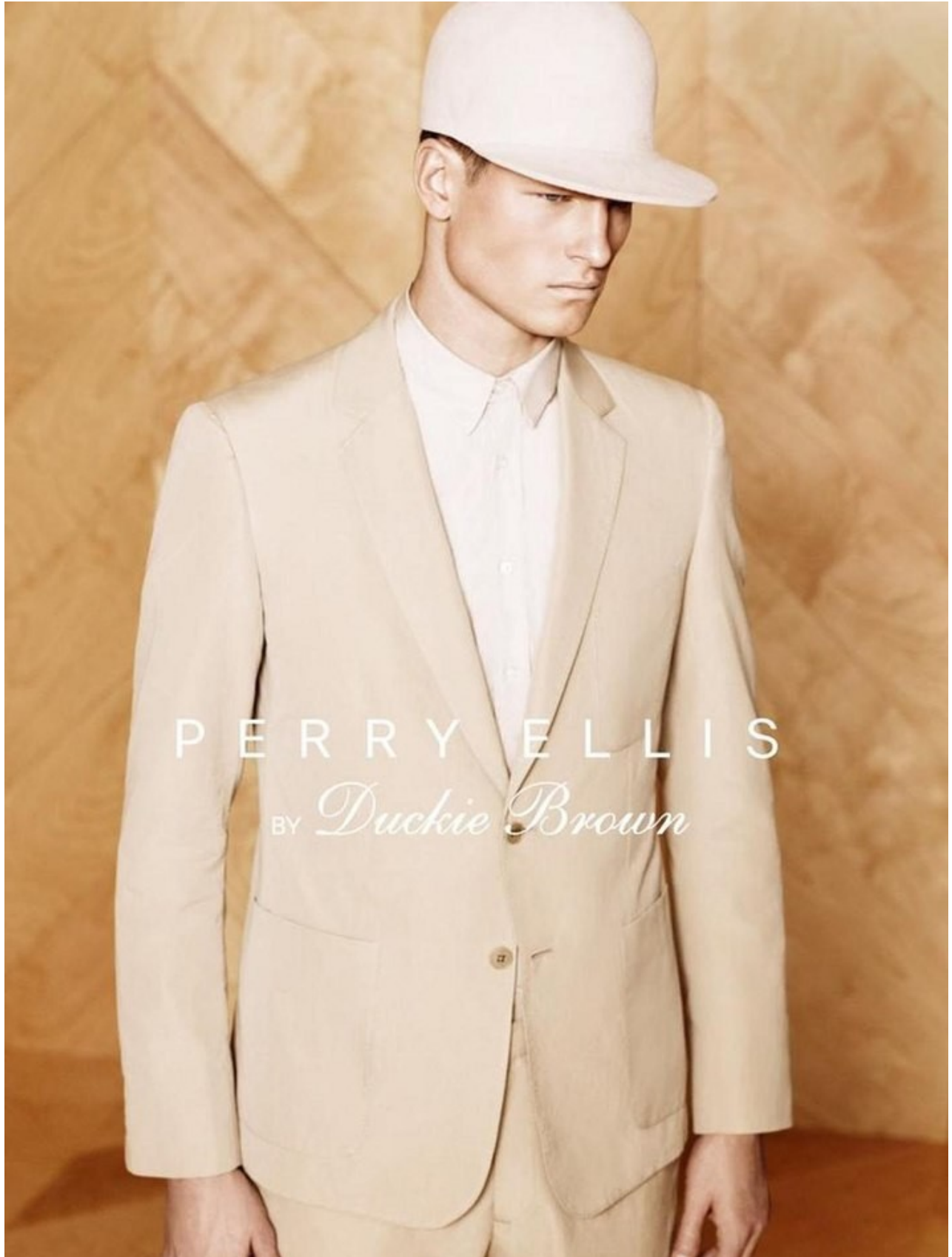


JOHN TODD

Height: 195cm Chest: 99cm Waist: 79cm Suit: 40 L Shoe: 10.5 UK Hair: Brown Eyes: Blue

BOSS MODELS

CAPE TOWN



JOHN TODD

Height: 195cm Chest: 99cm Waist: 79cm Suit: 40 L Shoe: 10.5 UK Hair: Brown Eyes: Blue

BOSS MODELS

CAPE TOWN

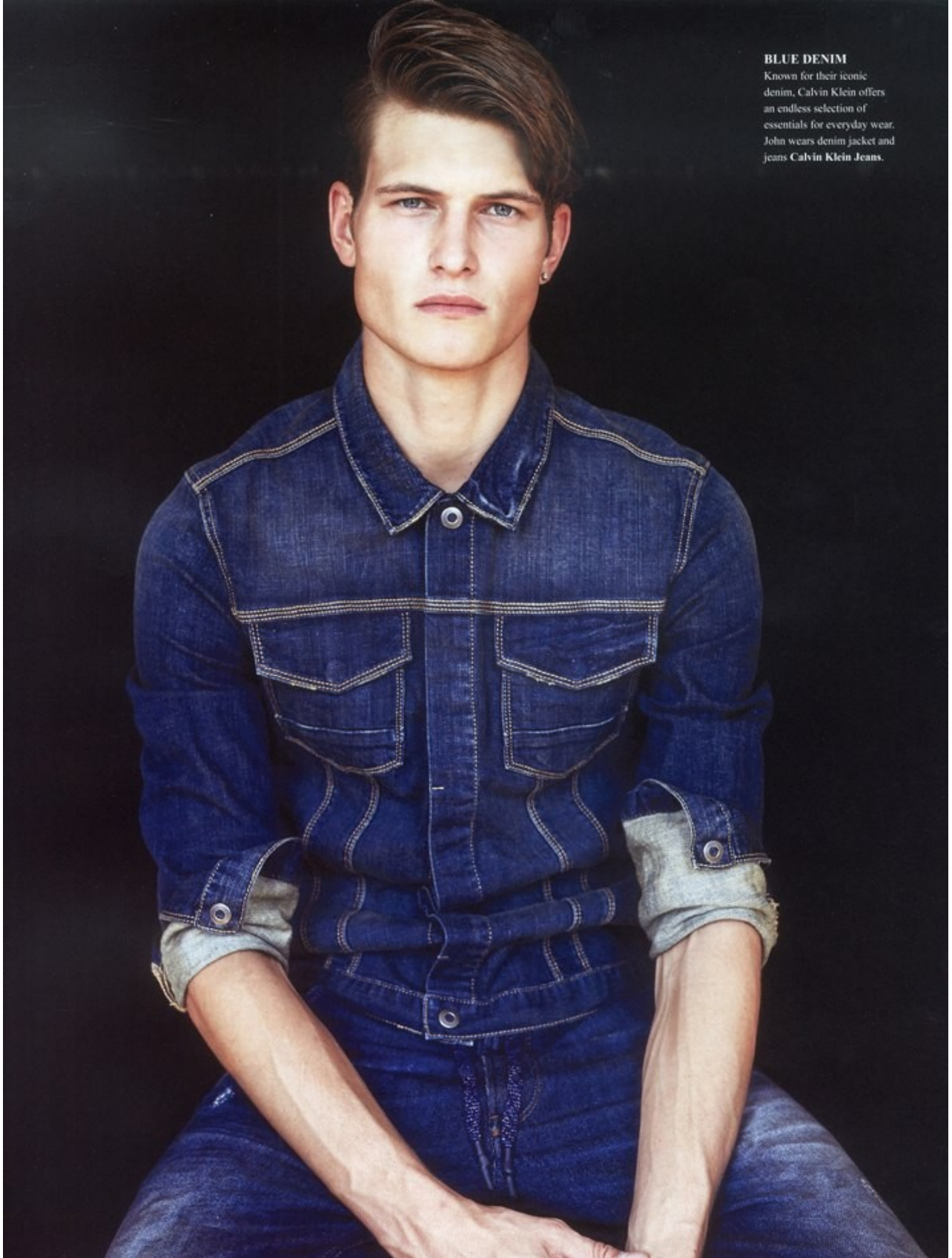


JOHN TODD

Height: 195cm Chest: 99cm Waist: 79cm Suit: 40 L Shoe: 10.5 UK Hair: Brown Eyes: Blue

BOSS MODELS

CAPE TOWN



BLUE DENIM

Known for their iconic denim, Calvin Klein offers an endless selection of essentials for everyday wear. John wears denim jacket and jeans Calvin Klein Jeans.

JOHN TODD

Height: 195cm Chest: 99cm Waist: 79cm Suit: 40 L Shoe: 10.5 UK Hair: Brown Eyes: Blue

BOSS MODELS

CAPE TOWN



BACK TO BASICS

Distressed denim adds character to everyday style. John wears jeans Diesel, shirt tied around waist Won Hundred and vintage backpack Jansport.

JOHN TODD

Height: 195cm Chest: 99cm Waist: 79cm Suit: 40 L Shoe: 10.5 UK Hair: Brown Eyes: Blue

BOSS MODELS

CAPE TOWN



JOHN TODD

Height: 195cm Chest: 99cm Waist: 79cm Suit: 40 L Shoe: 10.5 UK Hair: Brown Eyes: Blue

BOSS MODELS

CAPE TOWN

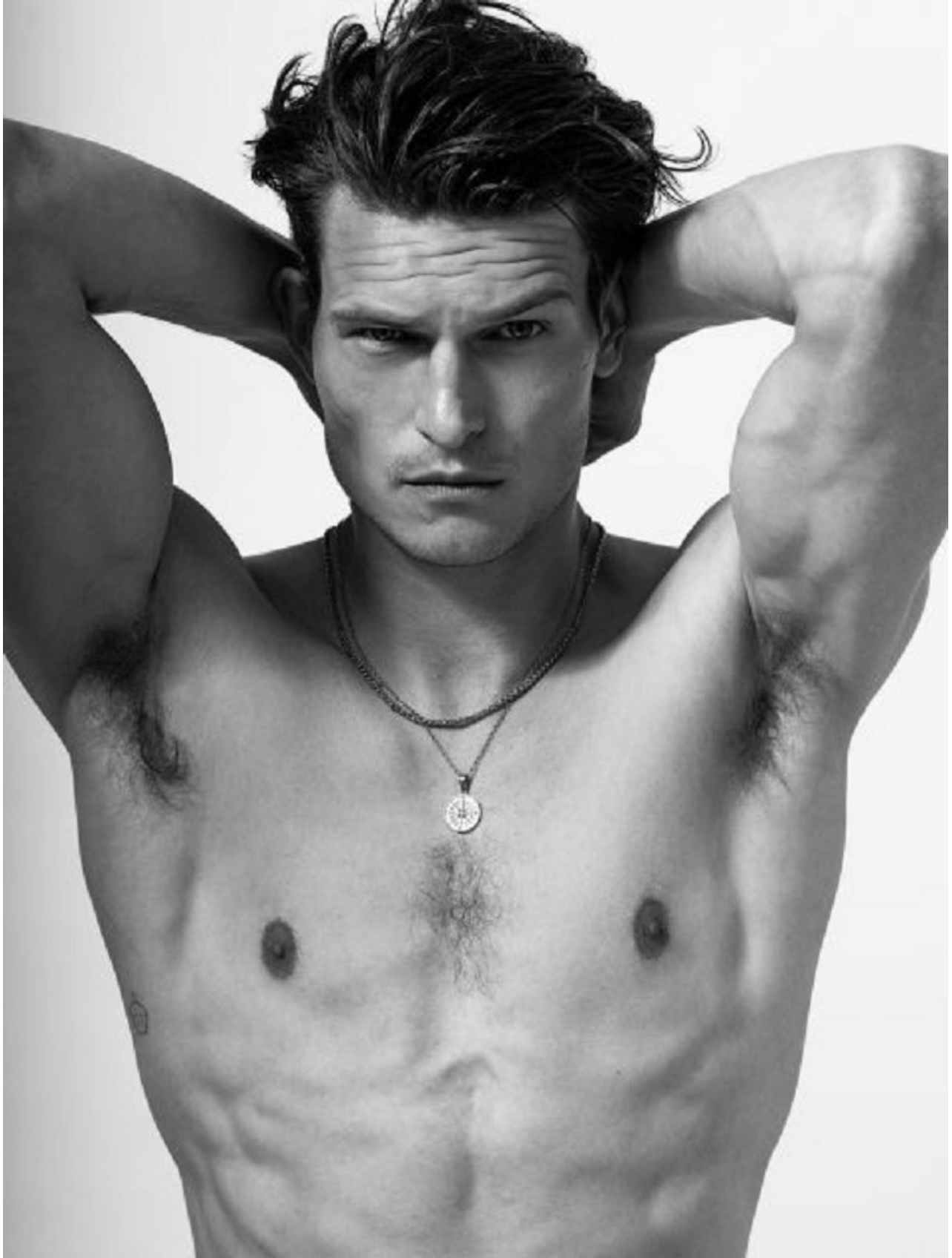


JOHN TODD

Height: 195cm Chest: 99cm Waist: 79cm Suit: 40 L Shoe: 10.5 UK Hair: Brown Eyes: Blue

BOSS MODELS

CAPE TOWN



JOHN TODD

Height: 195cm Chest: 99cm Waist: 79cm Suit: 40 L Shoe: 10.5 UK Hair: Brown Eyes: Blue

BOSS MODELS

CAPE TOWN



Sunglasses,
€195, Tom Ford
at stylebop.com

JOHN TODD

Height: 195cm Chest: 99cm Waist: 79cm Suit: 40 L Shoe: 10.5 UK Hair: Brown Eyes: Blue

BOSS MODELS

CAPE TOWN

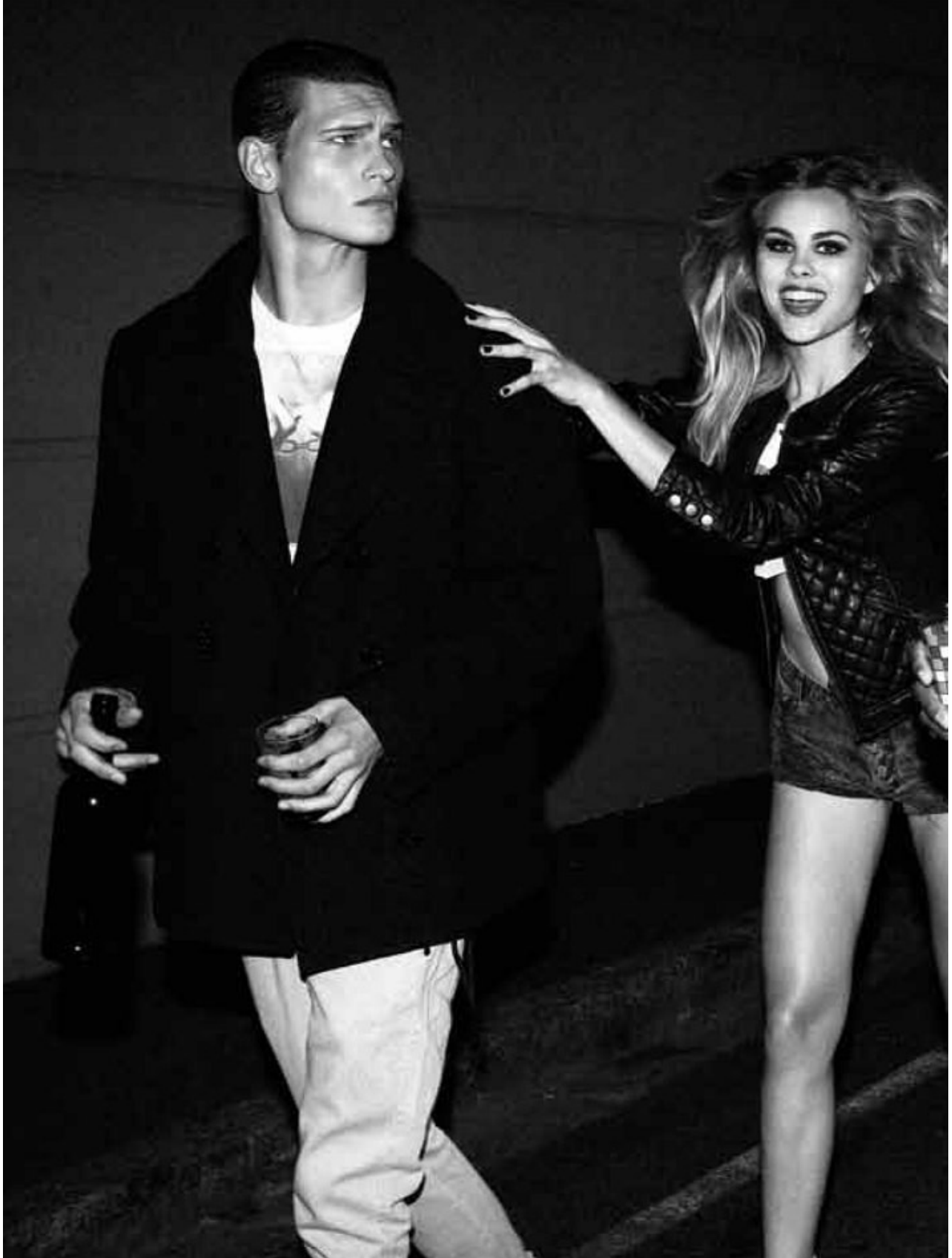


JOHN TODD

Height: 195cm Chest: 99cm Waist: 79cm Suit: 40 L Shoe: 10.5 UK Hair: Brown Eyes: Blue

BOSS MODELS

CAPE TOWN

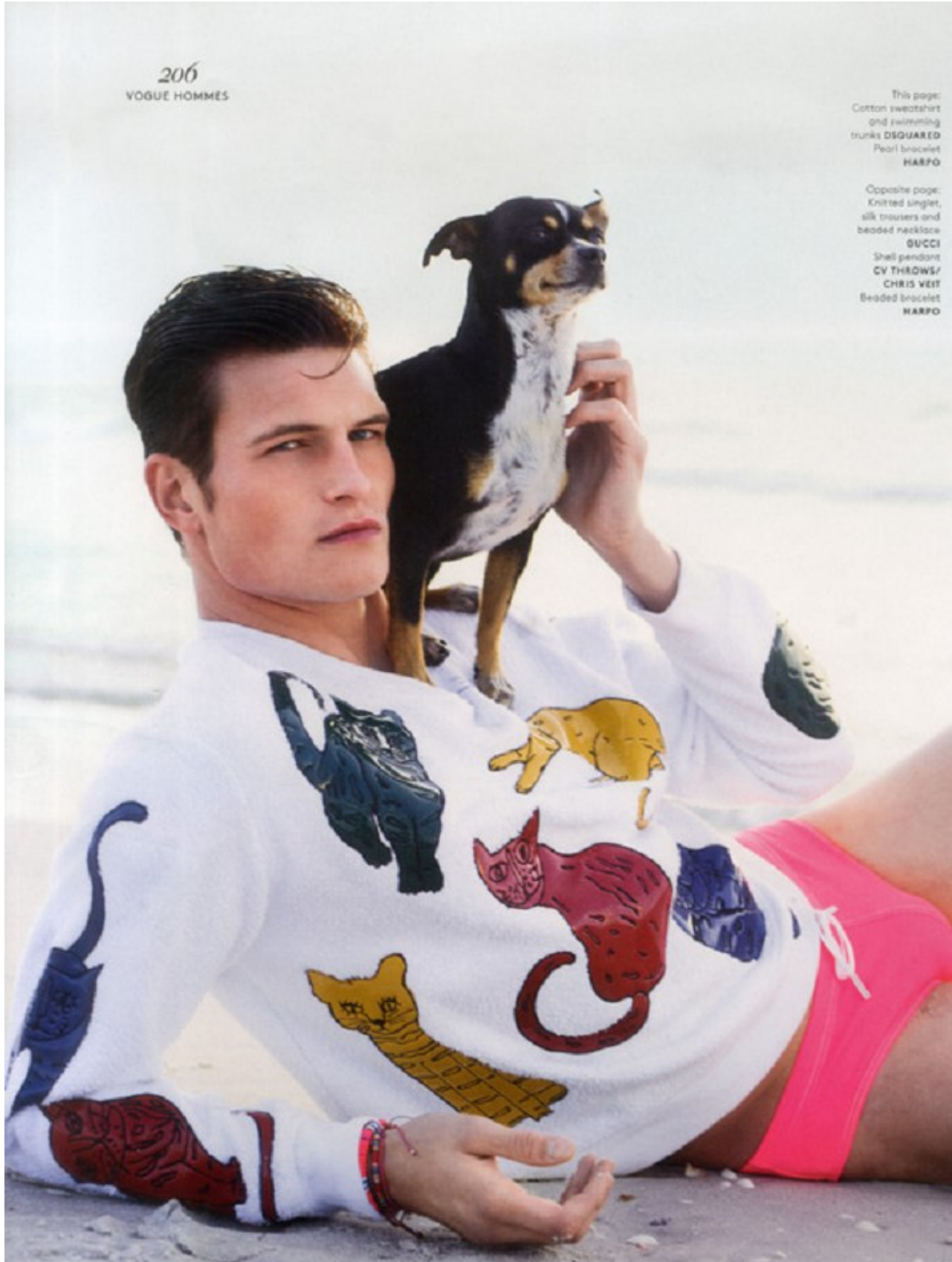


JOHN TODD

Height: 195cm Chest: 99cm Waist: 79cm Suit: 40 L Shoe: 10.5 UK Hair: Brown Eyes: Blue

BOSS MODELS

CAPE TOWN



JOHN TODD

Height: 195cm Chest: 99cm Waist: 79cm Suit: 40 L Shoe: 10.5 UK Hair: Brown Eyes: Blue

BOSS MODELS

CAPE TOWN

"At twenty, I was terribly difficult, a rebel."

Eyan Allen, Creative Director, HUGO

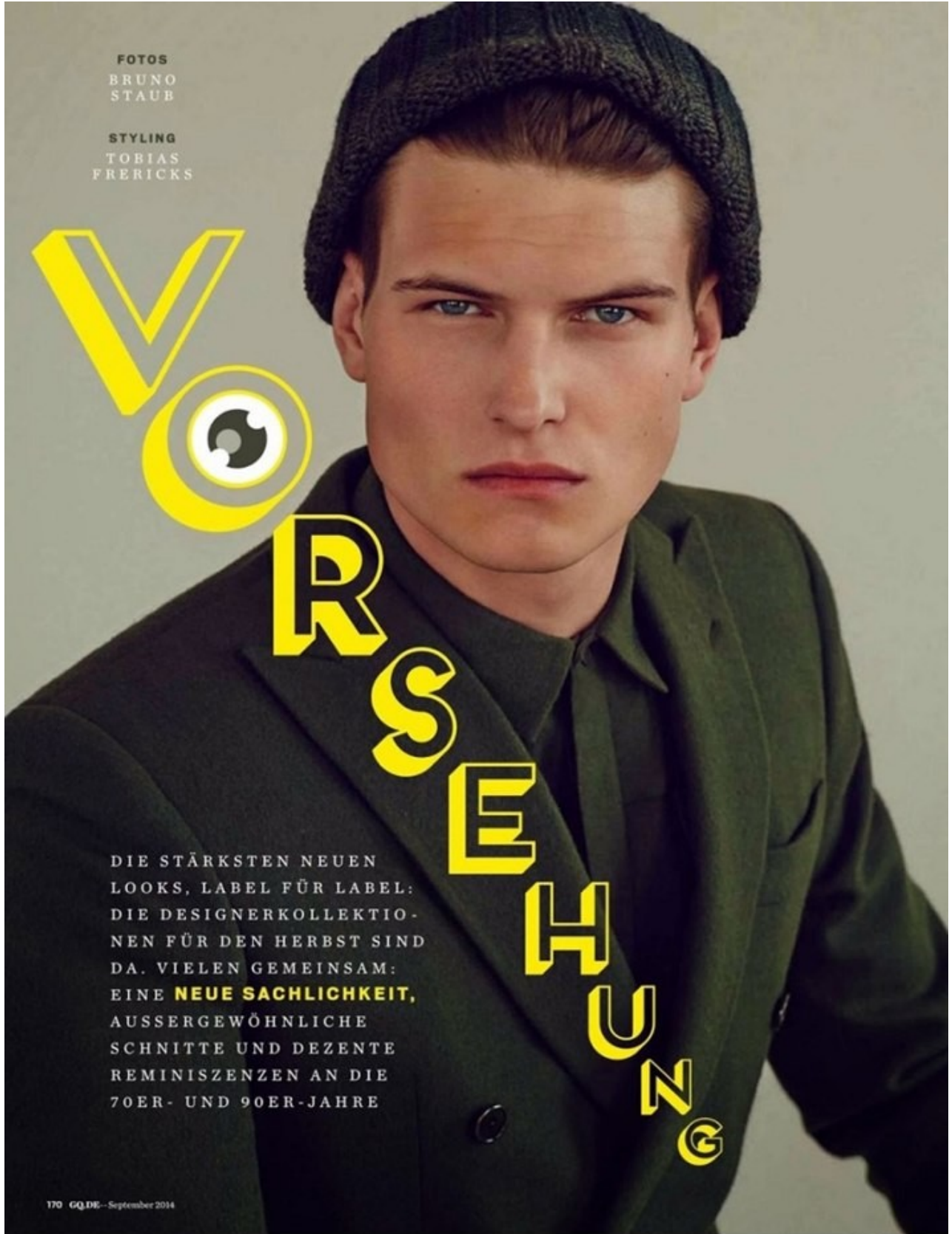


JOHN TODD

Height: 195cm Chest: 99cm Waist: 79cm Suit: 40 L Shoe: 10.5 UK Hair: Brown Eyes: Blue

BOSS MODELS

CAPE TOWN



FOTOS
BRUNO
STAUB

STYLING
TOBIAS
FRERICKS

V
O
R
S
E
H
U
N
G

DIE STÄRKSTEN NEUEN
LOOKS, LABEL FÜR LABEL:
DIE DESIGNERKOLLEKTIO-
NEN FÜR DEN HERBST SIND
DA. VIELEN GEMEINSAM:
EINE **NEUE SACHLICHKEIT**,
AUSSERGEWÖHNLICHE
SCHNITTE UND DEZENTE
REMINISZENZEN AN DIE
70ER- UND 90ER-JAHRE

170 GQ.DE - September 2014

GQ GERMAN

JOHN TODD

Height: 195cm Chest: 99cm Waist: 79cm Suit: 40 L Shoe: 10.5 UK Hair: Brown Eyes: Blue