

BOSS MODELS

CAPE TOWN

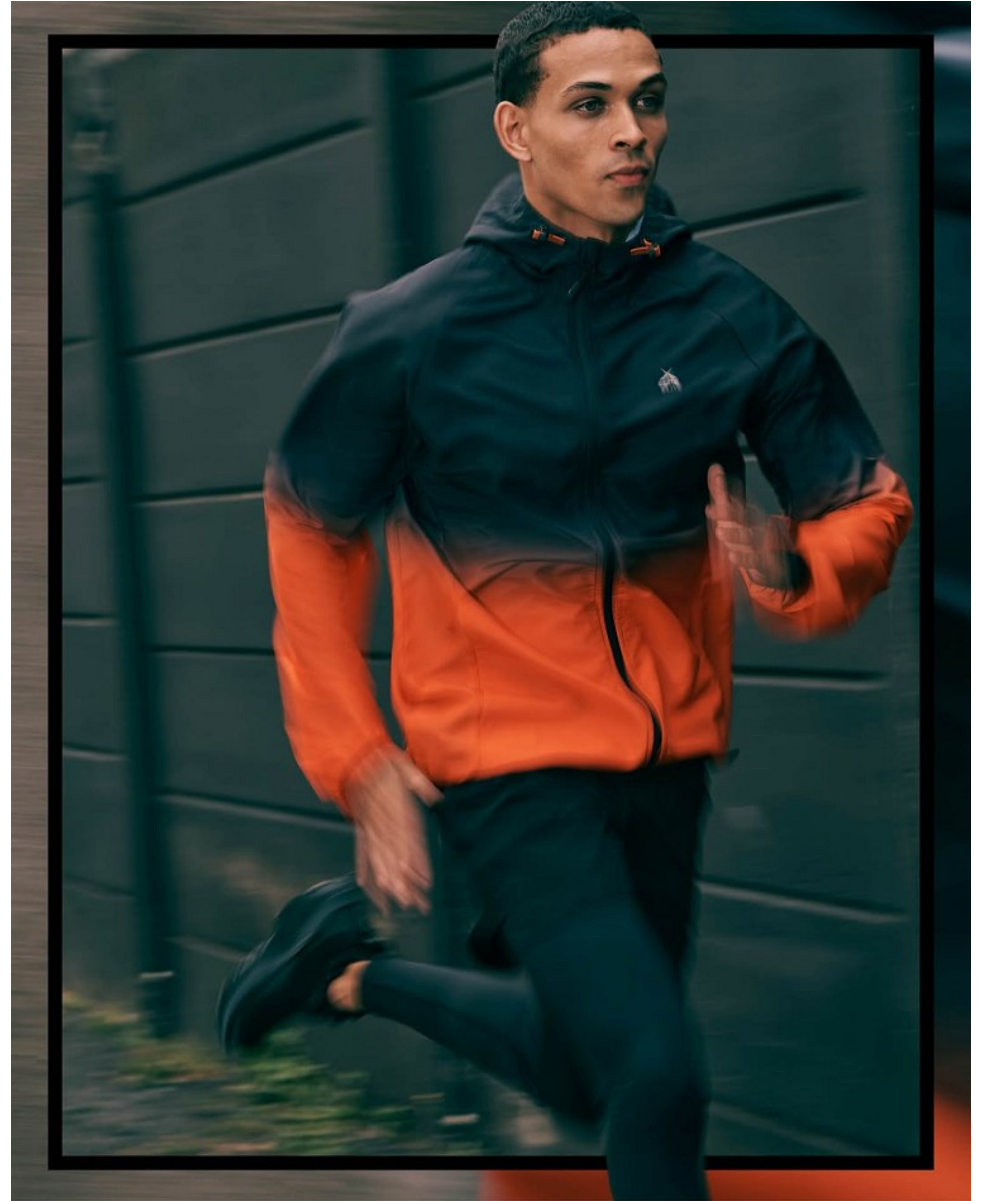
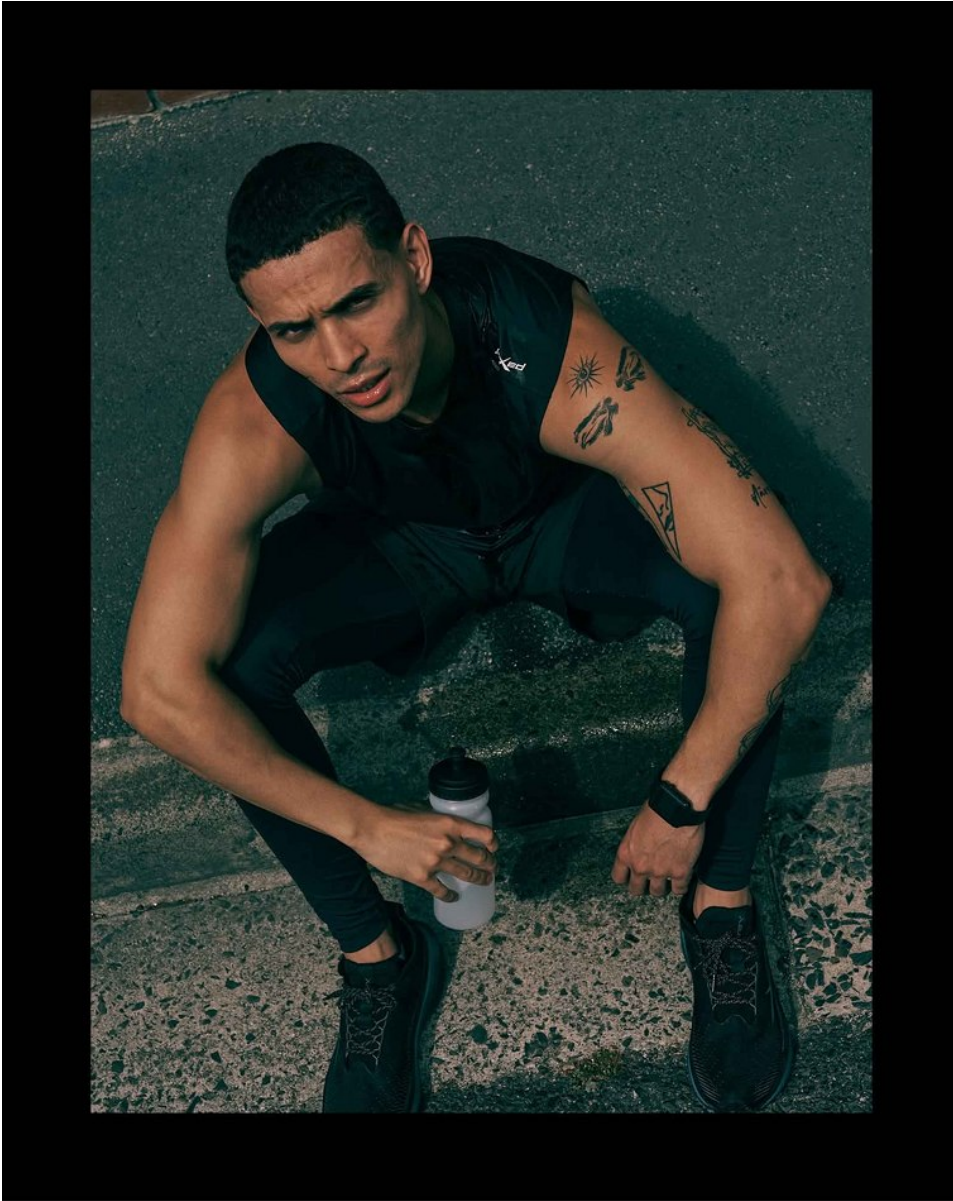


CALLYN HOPE

Height: 180cm Chest: 100cm Waist: 74cm Suit: 40 R Shoe: 8 UK Hair: Brown Eyes: Blue

BOSS MODELS

CAPE TOWN



CALLYN HOPE

Height: 180cm Chest: 100cm Waist: 74cm Suit: 40 R Shoe: 8 UK Hair: Brown Eyes: Blue

BOSS MODELS

CAPE TOWN

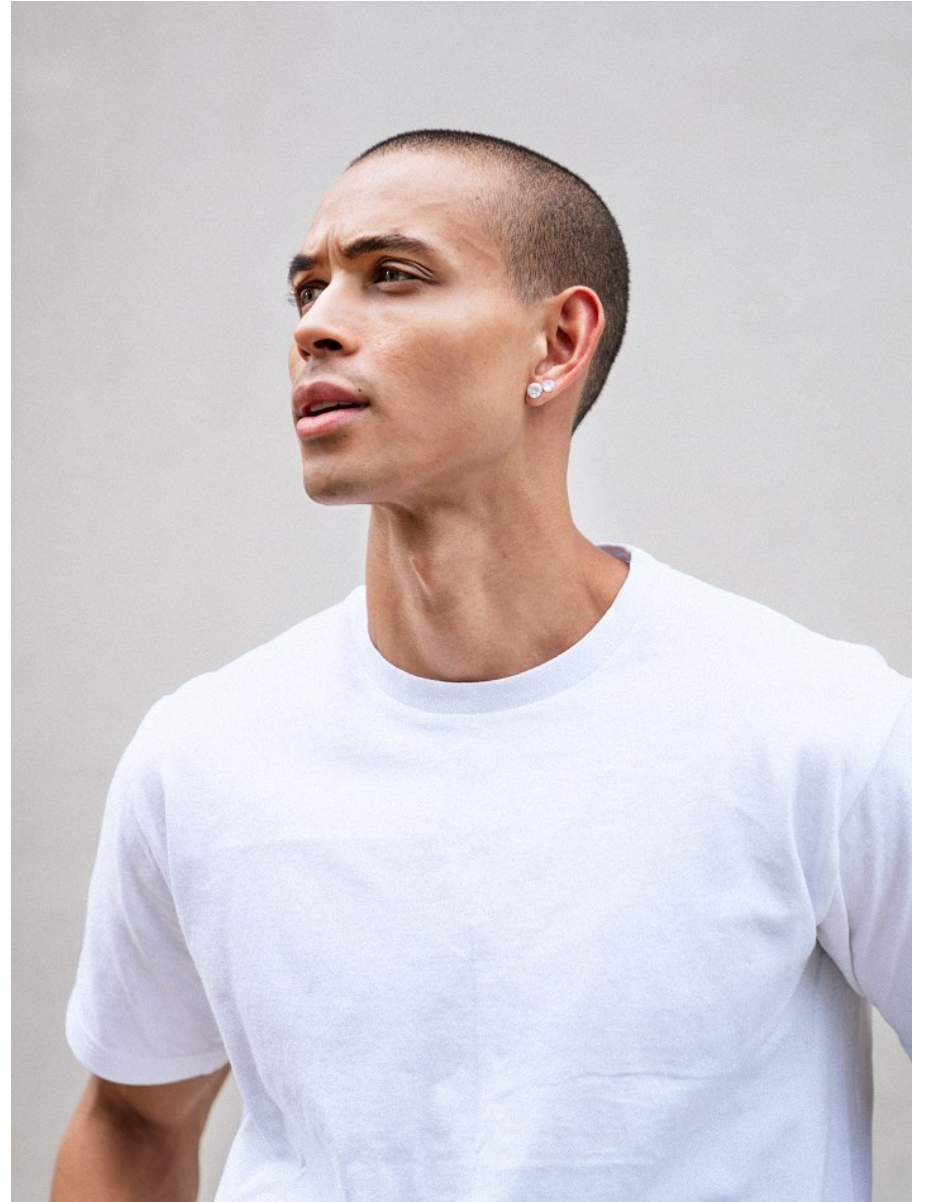


CALLYN HOPE

Height: 180cm Chest: 100cm Waist: 74cm Suit: 40 R Shoe: 8 UK Hair: Brown Eyes: Blue

BOSS MODELS

CAPE TOWN



CALLYN HOPE

Height: 180cm Chest: 100cm Waist: 74cm Suit: 40 R Shoe: 8 UK Hair: Brown Eyes: Blue

BOSS MODELS

CAPE TOWN



CALLYN HOPE

Height: 180cm Chest: 100cm Waist: 74cm Suit: 40 R Shoe: 8 UK Hair: Brown Eyes: Blue

BOSS MODELS

CAPE TOWN

RABANNE MILLION GOLD INTENSE

It all started in 2008 with 1 Million EDT. To call this fragrance from the French designer brand a phenomenon would be an understatement. We've lost count of all the flankers and special editions since then. Suffice to say, it's in the double digits.

After 2023's 1 Million Golden Oud Parfum Intense, where could the range go next? So we asked perfumer Christophe Raynaud, co-creator of the original and most of the subsequent versions, for his insights and this is what he had to say:

"Rabanne Million Gold introduces a bold new sensory experience while preserving the original's olfactive DNA of 1 Million. Million Gold seeks to replicate its addictive

success by enhancing the woody signature with the highest quality and most noble wood essences."

So where the OG was big on the spice, this 2024 iteration takes more of a woody approach (after the initial freshness of mandarin) with a blend of cedarwood and particularly sandalwood.

If you're one of those snobs who always thought 1 Million was a bit juvenile, think again. This is more sophisticated and grown-up stuff.

Stockists: Selected Woolworths, Edgars, Arc Stores and Truworths.



CALLYN HOPE

Height: 180cm Chest: 100cm Waist: 74cm Suit: 40 R Shoe: 8 UK Hair: Brown Eyes: Blue

BOSS MODELS

CAPE TOWN



OBVIOUS UN POIVRE

Want pepper? Lots of it? Come and get it.

In the short time they have been in the fragrance biz since 2020, the French niche brand has impressed us with their simplicity as the ultimate sophistication approach. Especially welcome in niche-dom where elaborate stories with price tags to match often take precedence.

One of their launch perfumes, Un Poivre (French for "a pepper") gets to the point with

its combo of black pepper and pink pepper at the fore. Caraway and ginger add to the spice blend. Violet leaf brings an element of fresh and airy greenery to the proceedings, settling with woody accents of vetiver and amyris.

As with several of the other releases we've tried from the brand (for example, Une Pistache EDP and Une Rose EDP), this Anne-Sophie Behaghel creation is distinctive stuff that's made even more appealing with its reasonable price.

Stockists: Metropolitan Cosmetics.

326 SUMMER 24/25

SUMMER 24/25 327

CALLYN HOPE

Height: 180cm Chest: 100cm Waist: 74cm Suit: 40 R Shoe: 8 UK Hair: Brown Eyes: Blue

BOSS MODELS

CAPE TOWN



CALLYN HOPE

Height: 180cm Chest: 100cm Waist: 74cm Suit: 40 R Shoe: 8 UK Hair: Brown Eyes: Blue

BOSS MODELS

CAPE TOWN



CALLYN HOPE

Height: 180cm Chest: 100cm Waist: 74cm Suit: 40 R Shoe: 8 UK Hair: Brown Eyes: Blue

BOSS MODELS

CAPE TOWN



CALLYN HOPE

Height: 180cm Chest: 100cm Waist: 74cm Suit: 40 R Shoe: 8 UK Hair: Brown Eyes: Blue

BOSS MODELS

CAPE TOWN

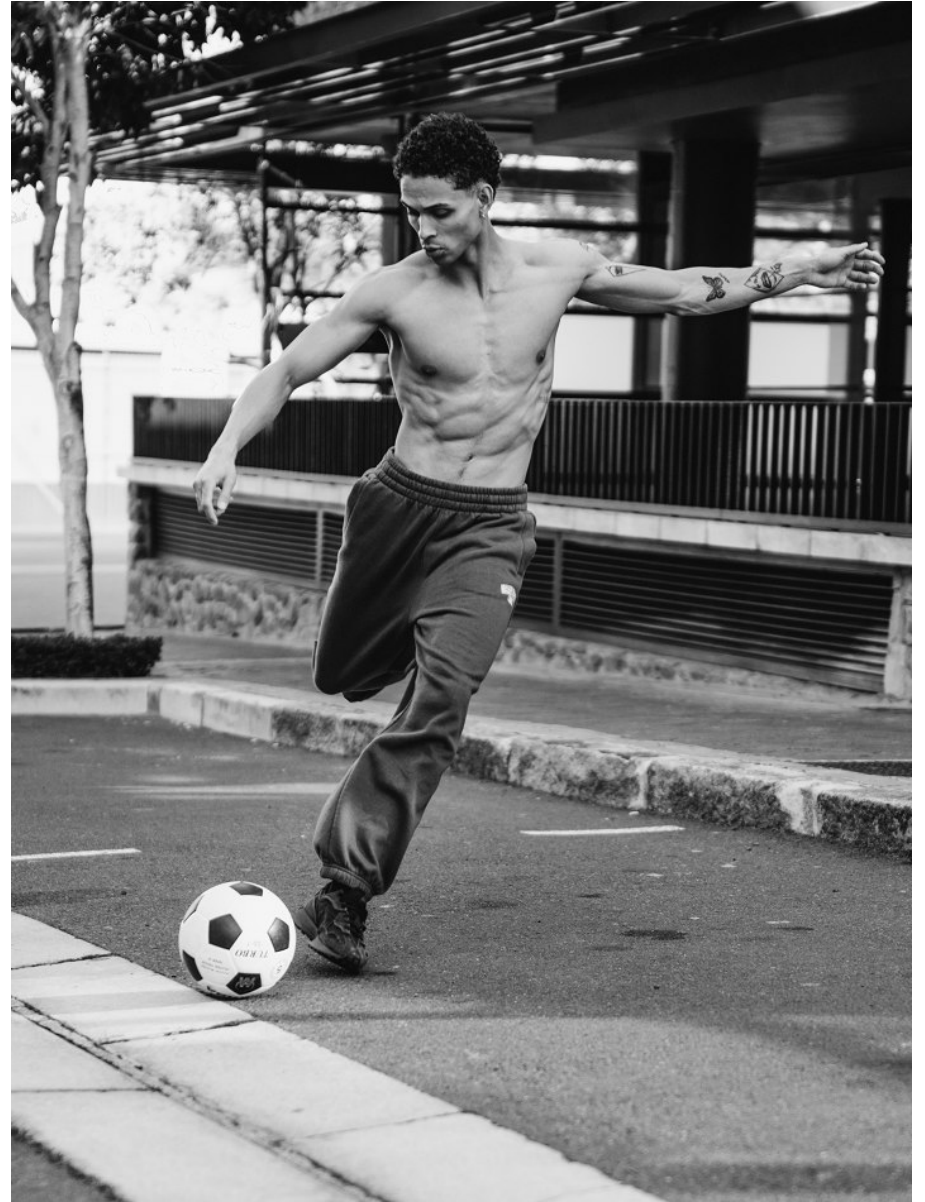


CALYN HOPE

Height: 180cm Chest: 100cm Waist: 74cm Suit: 40 R Shoe: 8 UK Hair: Brown Eyes: Blue

BOSS MODELS

CAPE TOWN

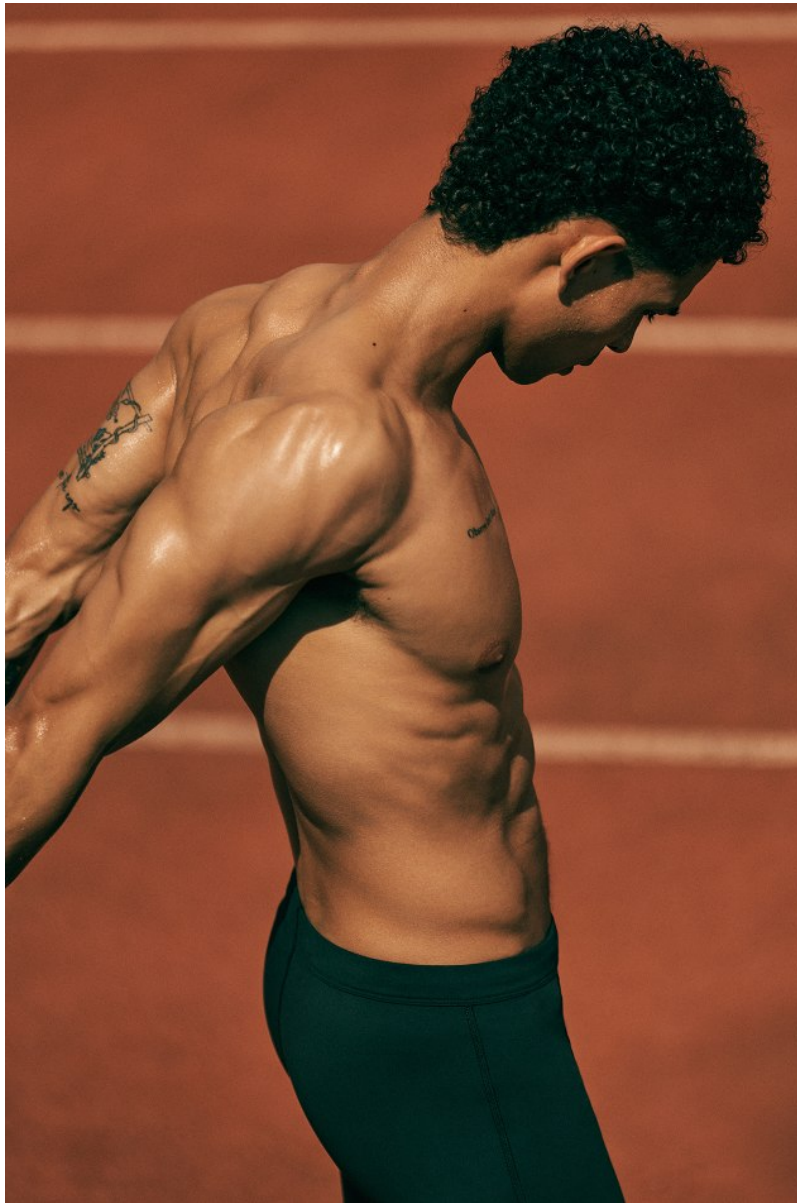


CALLYN HOPE

Height: 180cm Chest: 100cm Waist: 74cm Suit: 40 R Shoe: 8 UK Hair: Brown Eyes: Blue

BOSS MODELS

CAPE TOWN



CALLYN HOPE

Height: 180cm Chest: 100cm Waist: 74cm Suit: 40 R Shoe: 8 UK Hair: Brown Eyes: Blue

BOSS MODELS

CAPE TOWN



CALLYN HOPE

Height: 180cm Chest: 100cm Waist: 74cm Suit: 40 R Shoe: 8 UK Hair: Brown Eyes: Blue

BOSS MODELS

CAPE TOWN

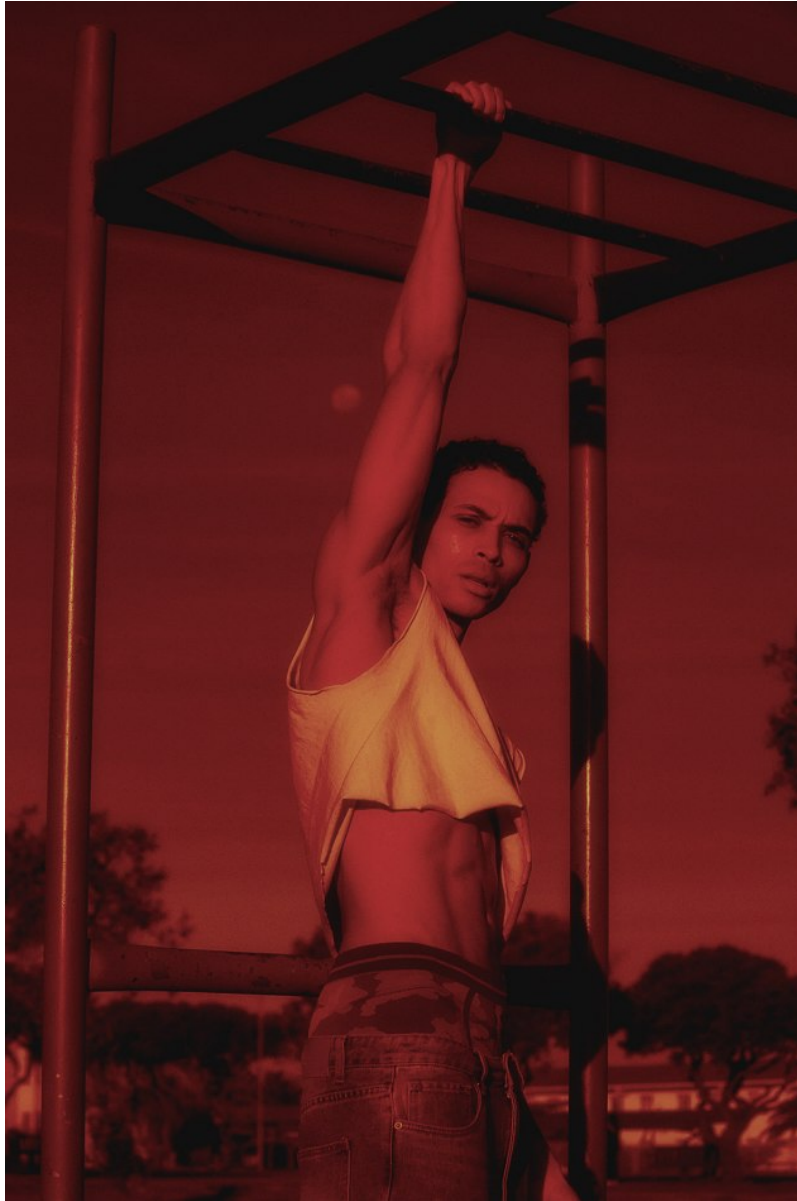


CALLYN HOPE

Height: 180cm Chest: 100cm Waist: 74cm Suit: 40 R Shoe: 8 UK Hair: Brown Eyes: Blue

BOSS MODELS

CAPE TOWN



CALLYN HOPE

Height: 180cm Chest: 100cm Waist: 74cm Suit: 40 R Shoe: 8 UK Hair: Brown Eyes: Blue