

BOSS MODELS

CAPE TOWN



SERGEI ADONIS

Height: 188cm Chest: 101cm Waist: 78cm Suit: 40 R Shoe: 12 UK Hair: Black Eyes: Brown

BOSS MODELS

CAPE TOWN



No Blazer Required

This navy two-piece waistcoat and pants is a classic choice for smart-casual weddings. You could comfortably opt for a white shirt, but a blue layer nets you fresh monochromatic colour blocking throughout.

Woolworths shirt R429
Woolworths waistcoat R599
Woolworths pants R650
Eurosuit bow tie R170
Galaxy bracelet R299
Stones watch R499
Woolworths socks 7 pack R189
Jekyll & Hyde shoes R2199

Men'sHealth
WEDDING
MANUAL

DOMSMEN

A fool-proof dress code for your best bros on your big day.

FASHION DIRECTOR **AZEEZ JACOBS**
PHOTOGRAPHY **TERI ROBERTS**
FASHION EDITOR **WAGHEBA JANUARY**



SERGEI ADONIS

Height: 188cm Chest: 101cm Waist: 78cm Suit: 40 R Shoe: 12 UK Hair: Black Eyes: Brown

BOSS MODELS

CAPE TOWN



SERGEI ADONIS

Height: 188cm Chest: 101cm Waist: 78cm Suit: 40 R Shoe: 12 UK Hair: Black Eyes: Brown

BOSS MODELS

CAPE TOWN



SERGEI ADONIS

Height: 188cm Chest: 101cm Waist: 78cm Suit: 40 R Shoe: 12 UK Hair: Black Eyes: Brown

BOSS MODELS

CAPE TOWN



SERGEI ADONIS

Height: 188cm Chest: 101cm Waist: 78cm Suit: 40 R Shoe: 12 UK Hair: Black Eyes: Brown

BOSS MODELS

CAPE TOWN

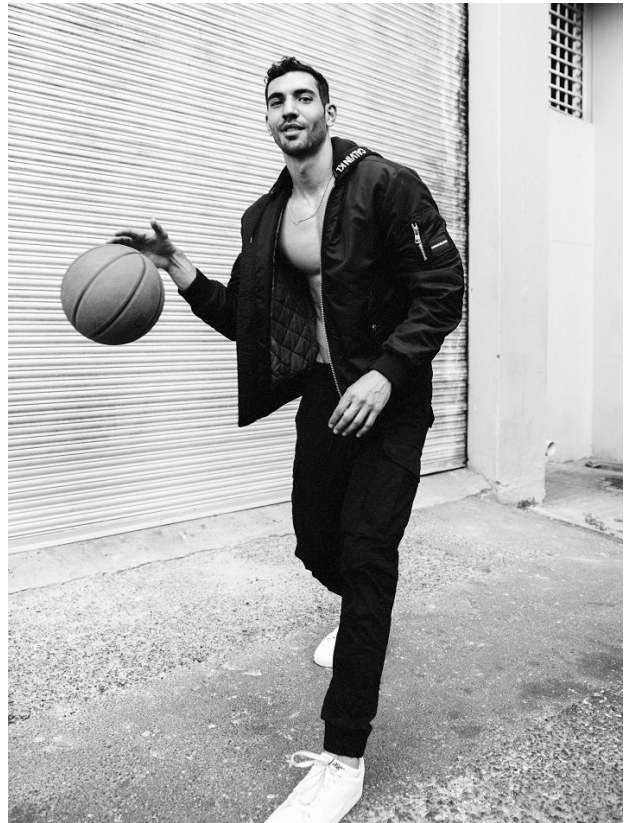
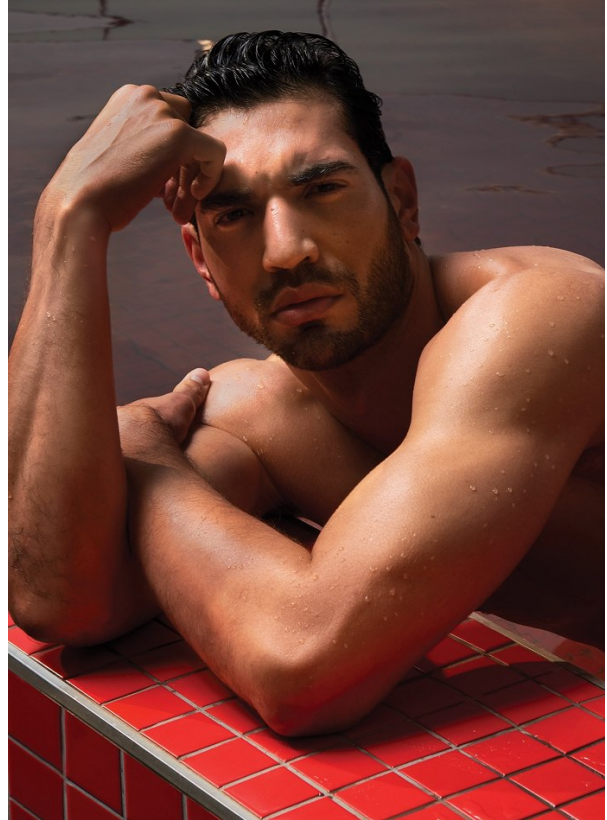


SERGEI ADONIS

Height: 188cm Chest: 101cm Waist: 78cm Suit: 40 R Shoe: 12 UK Hair: Black Eyes: Brown

BOSS MODELS

CAPE TOWN



SERGEI ADONIS

Height: 188cm Chest: 101cm Waist: 78cm Suit: 40 R Shoe: 12 UK Hair: Black Eyes: Brown

BOSS MODELS

CAPE TOWN



SERGEI ADONIS

Height: 188cm Chest: 101cm Waist: 78cm Suit: 40 R Shoe: 12 UK Hair: Black Eyes: Brown

BOSS MODELS

CAPE TOWN



SERGEI ADONIS

Height: 188cm Chest: 101cm Waist: 78cm Suit: 40 R Shoe: 12 UK Hair: Black Eyes: Brown