

BOSS MODELS

CAPE TOWN



Crafted for professionalism, since 1851.

ARROW
USA • 1851



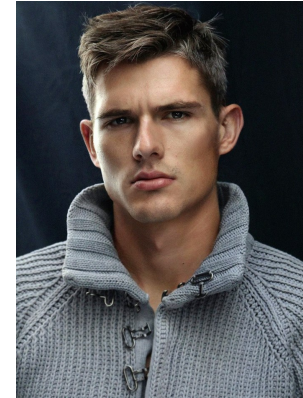
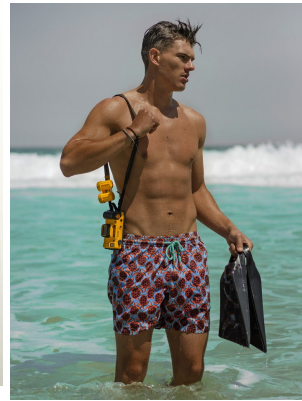
CALVIN KING

Height: 188cm Chest: 99cm Waist: 81cm Suit: 40 R Shoe: 10 UK Hair: Grey Brown Eyes: Green/Grey

BOSS MODELS

CAPE TOWN

Image: Calvin King represented by Boss Models Cape Town



CALVIN KING

Height: 188cm Chest: 99cm Waist: 81cm Suit: 40 R Shoe: 10 UK Hair: Grey Brown Eyes: Green/Grey