

BOSS MODELS

CAPE TOWN



LUNGA MLANDU

Height: 188cm Chest: 96cm Waist: 86cm Suit: 40 L Shoe: 11 UK Hair: Black Eyes: Black

BOSS MODELS

CAPE TOWN

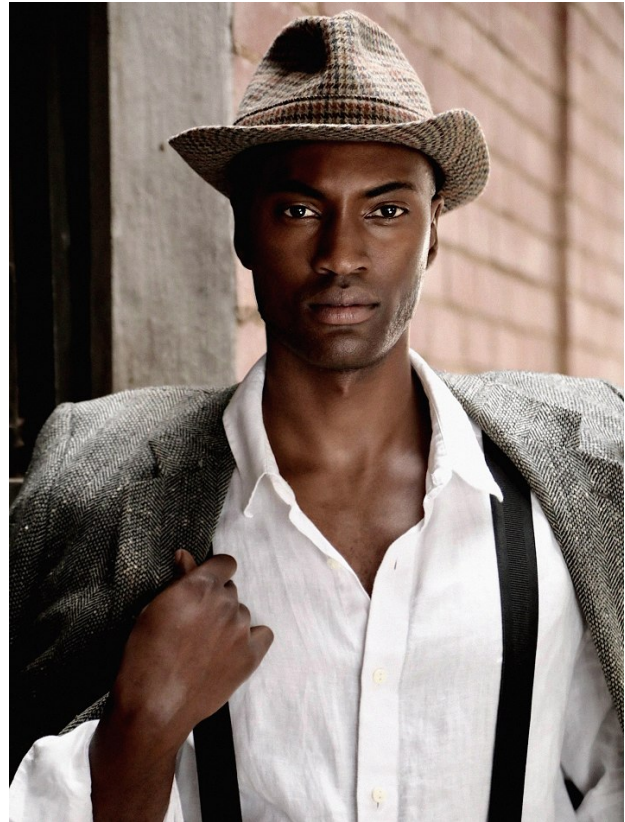


LUNGA MLANDU

Height: 188cm Chest: 96cm Waist: 86cm Suit: 40 L Shoe: 11 UK Hair: Black Eyes: Black

BOSS MODELS

CAPE TOWN



LUNGA MLANDU

Height: 188cm Chest: 96cm Waist: 86cm Suit: 40 L Shoe: 11 UK Hair: Black Eyes: Black

BOSS MODELS

CAPE TOWN



ESSENTIALS | FASHION ADVICE



Give life to the classics
Reinvigorate traditional prints by jazzing up your colour scheme and adding a hint of old world elegance to your style.

A
White dots and pinstripes might mean serious business, combining them can transport your look into a playful space – and since they're such ordinary patterns, they won't go overboard. Feeling braver? Go for an adventurous disco-inspired geometric. Contrast two prints, max, and pair with a solid colour.

B
Stick to a simple colour palette of red, burgundy, blue and navy. They offer an easy transition from a work to after work (by swapping one of the cooler shades for a red or burgundy).

C
Don't be too basic. You want to give life to your outfit by bringing in an element of old world elegance. Pair older, more elegant silhouettes, like a trench, with your look, or add an element of shen in the form of a jacket.

From left Lunga wears: **Isabel** trench coat R1 899. **Ben** Sheraton shirt R1 249. **Tiger of Sweden** pants R4 399. **Cal R** Spring shoes R799

Also wears: **Tiger of Sweden** jacket R14 599. **Markham** shirt R250. **Polo** pants R1 499. **Topman** tie R229. **Alber** shoes R3 499

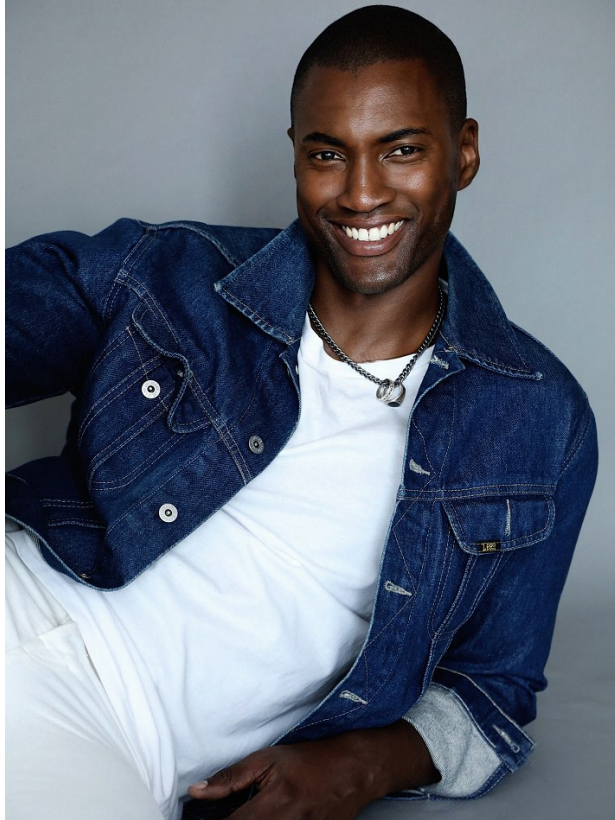
30 09.CO.ZA JUNE 2016

LUNGA MLANDU

Height: 188cm Chest: 96cm Waist: 86cm Suit: 40 L Shoe: 11 UK Hair: Black Eyes: Black

BOSS MODELS

CAPE TOWN

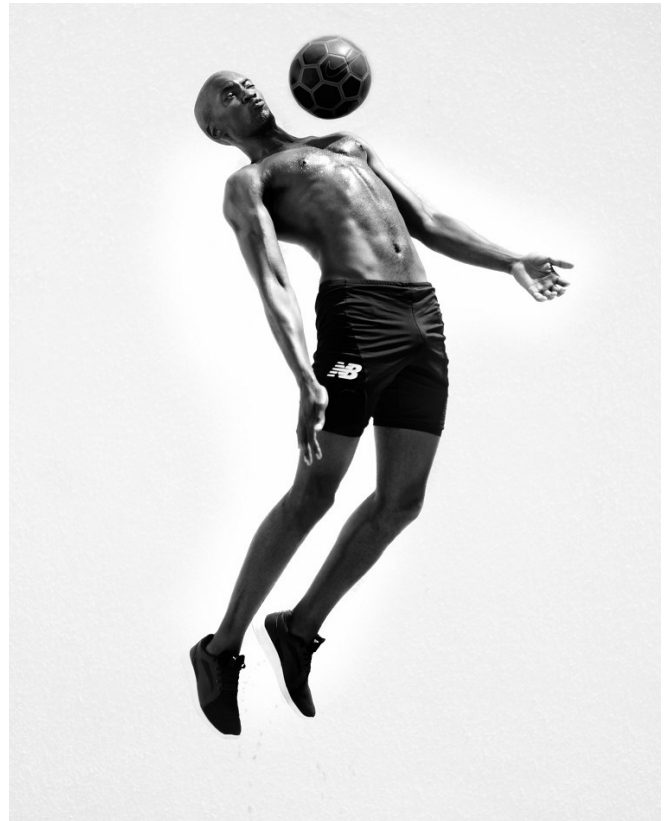
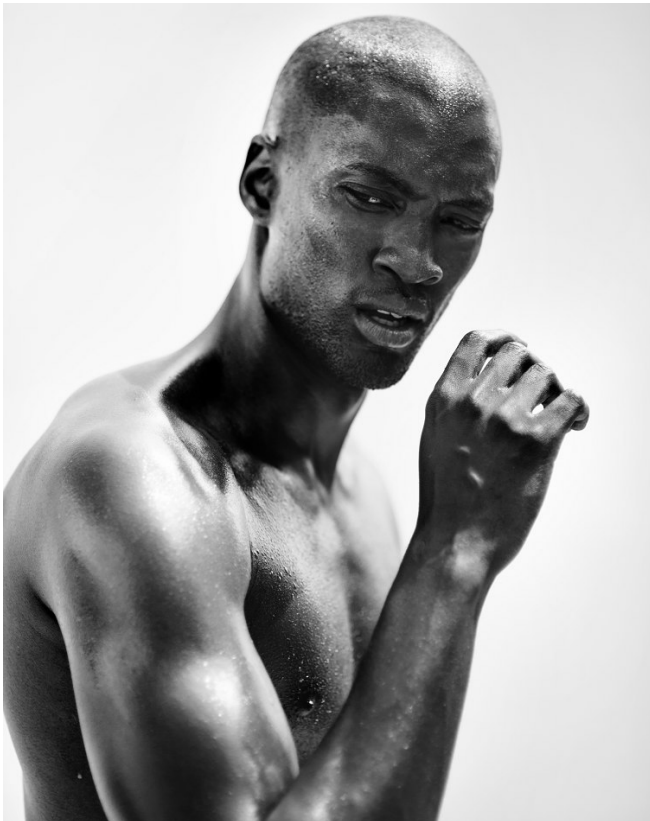


LUNGA MLANDU

Height: 188cm Chest: 96cm Waist: 86cm Suit: 40 L Shoe: 11 UK Hair: Black Eyes: Black

BOSS MODELS

CAPE TOWN



LUNGA MLANDU

Height: 188cm Chest: 96cm Waist: 86cm Suit: 40 L Shoe: 11 UK Hair: Black Eyes: Black

BOSS MODELS

CAPE TOWN



LUNGA MLANDU

Height: 188cm Chest: 96cm Waist: 86cm Suit: 40 L Shoe: 11 UK Hair: Black Eyes: Black

BOSS MODELS

CAPE TOWN



LUNGA MLANDU

Height: 188cm Chest: 96cm Waist: 86cm Suit: 40 L Shoe: 11 UK Hair: Black Eyes: Black