

# BOSS MODELS

CAPE TOWN

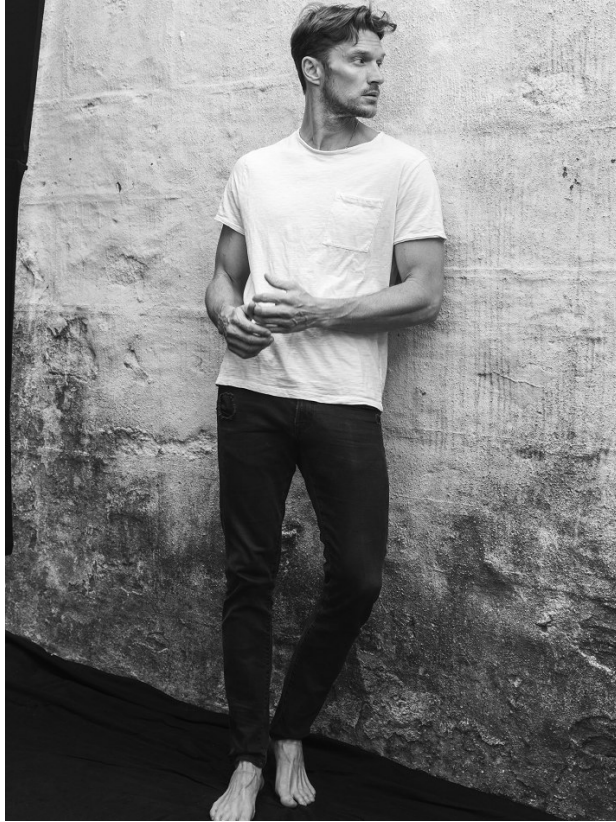


SHAUN DE WET

Height: 188cm Chest: 98cm Waist: 79cm Suit: 38.5 R Shoe: 10.5 UK Hair: Blonde Eyes: Blue

# BOSS MODELS

CAPE TOWN



SHAUN DE WET

Height: 188cm Chest: 98cm Waist: 79cm Suit: 38.5 R Shoe: 10.5 UK Hair: Blonde Eyes: Blue

# BOSS MODELS

CAPE TOWN

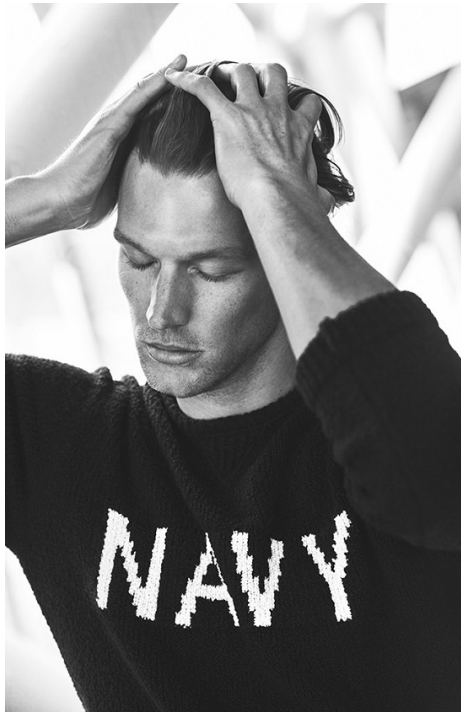


## SHAUN DE WET

Height: 188cm Chest: 98cm Waist: 79cm Suit: 38.5 R Shoe: 10.5 UK Hair: Blonde Eyes: Blue

# BOSS MODELS

CAPE TOWN



SHAUN DE WET

Height: 188cm Chest: 98cm Waist: 79cm Suit: 38.5 R Shoe: 10.5 UK Hair: Blonde Eyes: Blue

# BOSS MODELS

CAPE TOWN



MASSIMODUTTI.COM

Massimo Dutti



7

BUSINESS



Links Seite: BOSS Anzug, dreifachig 899,- | ETON Hemd 169,- | Drees Seite, links: DRYKORN Anzug 499,- | YVES Hemd 79,90  
Drees Seite, rechts: STELLSON Veston 4-Piece-Matche 449,- | Hemd 119,- | Hose 4-Piece-Matche 179,- | Krawatte 79,90

## SHAUN DE WET

Height: 188cm Chest: 98cm Waist: 79cm Suit: 38.5 R Shoe: 10.5 UK Hair: Blonde Eyes: Blue

# BOSS MODELS

CAPE TOWN



SHAUN DE WET

Height: 188cm Chest: 98cm Waist: 79cm Suit: 38.5 R Shoe: 10.5 UK Hair: Blonde Eyes: Blue

# BOSS MODELS

CAPE TOWN



服装师: J. Sander  
化妆: Charlie by Matthew Zink  
发型: Gace



服装师: 陈耀林 化妆师: Calvin Klein (London)  
发型师: Tom Ford



## SHAUN DE WET

Height: 188cm Chest: 98cm Waist: 79cm Suit: 38.5 R Shoe: 10.5 UK Hair: Blonde Eyes: Blue

# BOSS MODELS

CAPE TOWN



J BRAND  
JBRANDJEANS.COM



## SHAUN DE WET

Height: 188cm Chest: 98cm Waist: 79cm Suit: 38.5 R Shoe: 10.5 UK Hair: Blonde Eyes: Blue



# BOSS MODELS

CAPE TOWN



SHAUN DE WET

Height: 188cm Chest: 98cm Waist: 79cm Suit: 38.5 R Shoe: 10.5 UK Hair: Blonde Eyes: Blue

# BOSS MODELS

CAPE TOWN



**Nadja Bender**  
Bender, 22, lives in Copenhagen when she's not in runway shows for Alexander Wang, Versace, and Lanvin or shooting ad campaigns for Salma and Gisele.

What's your typical preparty routine?

"If I go all in, I'll take a very long shower—wash my hair, shave my legs, and then walk around in my robe for a very long time, just relax and chill."

How do you get in the mood to go out?

"I'll put on a good party song—we have some lucky pop music [in Denmark]. I would never listen to it unless I was going to a party, but I cannot sit still. I'll be singing into the hair-dryer."

Where do you go when a party is over?

"There's a popular pizza place near all of the clubs. We call it 'Norma Pizza' because back in the old days, they had a TV screen in the back that would play porn."

**SWANKY PANKY**  
On Nadja Bender: Organza-embroidered vest; Green by Giorgio Armani; Necklace by Beavercreek; Makeup colors: Color Design 5 Shadow & Liner Palette in Midnote; Fragrance: L'Absolu Rouge; Footlock fit: Size by Lancone. On Shaun De Wet: Tuxedo and shirt by Louis Vuitton; Bow tie by Tom Ford; Hair: Orlando Pita of Orlo Salon; Makeup: Dorel; Manicure: Bernadette Thompson. Shot at the Dior suite at the St. Regis Hotel, New York. Details, see Shopping Guide.

223



calvinklein.com 212.292.9000

## SHAUN DE WET

Height: 188cm Chest: 98cm Waist: 79cm Suit: 38.5 R Shoe: 10.5 UK Hair: Blonde Eyes: Blue

# BOSS MODELS

CAPE TOWN



SHAUN DE WET

Height: 188cm Chest: 98cm Waist: 79cm Suit: 38.5 R Shoe: 10.5 UK Hair: Blonde Eyes: Blue

# BOSS MODELS

CAPE TOWN



SHAUN DE WET

Height: 188cm Chest: 98cm Waist: 79cm Suit: 38.5 R Shoe: 10.5 UK Hair: Blonde Eyes: Blue

# BOSS MODELS

CAPE TOWN



SHAUN DE WET

Height: 188cm Chest: 98cm Waist: 79cm Suit: 38.5 R Shoe: 10.5 UK Hair: Blonde Eyes: Blue