

# BOSS MODELS

CAPE TOWN



FRAN VAN OUDSHOORN

Height: 170cm Bust: 83cm Waist: 62cm Hips: 89cm Shoe: 6 UK Hair: Dark Brown Eyes: Blue

# BOSS MODELS

CAPE TOWN



FRAN VAN OUDSHOORN

Height: 170cm Bust: 83cm Waist: 62cm Hips: 89cm Shoe: 6 UK Hair: Dark Brown Eyes: Blue

# BOSS MODELS

CAPE TOWN



FRAN VAN OUDSHOORN

Height: 170cm Bust: 83cm Waist: 62cm Hips: 89cm Shoe: 6 UK Hair: Dark Brown Eyes: Blue

# BOSS MODELS

CAPE TOWN



FRAN VAN OUDSHOORN

Height: 170cm Bust: 83cm Waist: 62cm Hips: 89cm Shoe: 6 UK Hair: Dark Brown Eyes: Blue

# BOSS MODELS

CAPE TOWN



FRAN VAN OUDSHOORN

Height: 170cm Bust: 83cm Waist: 62cm Hips: 89cm Shoe: 6 UK Hair: Dark Brown Eyes: Blue

# BOSS MODELS

CAPE TOWN



## FRAN VAN OUDSHOORN

Height: 170cm Bust: 83cm Waist: 62cm Hips: 89cm Shoe: 6 UK Hair: Dark Brown Eyes: Blue

# BOSS MODELS

CAPE TOWN



FRAN VAN OUDSHOORN

Height: 170cm Bust: 83cm Waist: 62cm Hips: 89cm Shoe: 6 UK Hair: Dark Brown Eyes: Blue

# BOSS MODELS

CAPE TOWN



## FRAN VAN OUDSHOORN

Height: 170cm Bust: 83cm Waist: 62cm Hips: 89cm Shoe: 6 UK Hair: Dark Brown Eyes: Blue



# BOSS MODELS

CAPE TOWN



FRAN VAN OUDSHOORN

Height: 170cm Bust: 83cm Waist: 62cm Hips: 89cm Shoe: 6 UK Hair: Dark Brown Eyes: Blue

# BOSS MODELS

CAPE TOWN



FRAN VAN OUDSHOORN

Height: 170cm Bust: 83cm Waist: 62cm Hips: 89cm Shoe: 6 UK Hair: Dark Brown Eyes: Blue

# BOSS MODELS

CAPE TOWN



FRAN VAN OUDSHOORN

Height: 170cm Bust: 83cm Waist: 62cm Hips: 89cm Shoe: 6 UK Hair: Dark Brown Eyes: Blue

# BOSS MODELS

CAPE TOWN



FRAN VAN OUDSHOORN

Height: 170cm Bust: 83cm Waist: 62cm Hips: 89cm Shoe: 6 UK Hair: Dark Brown Eyes: Blue

# BOSS MODELS

CAPE TOWN

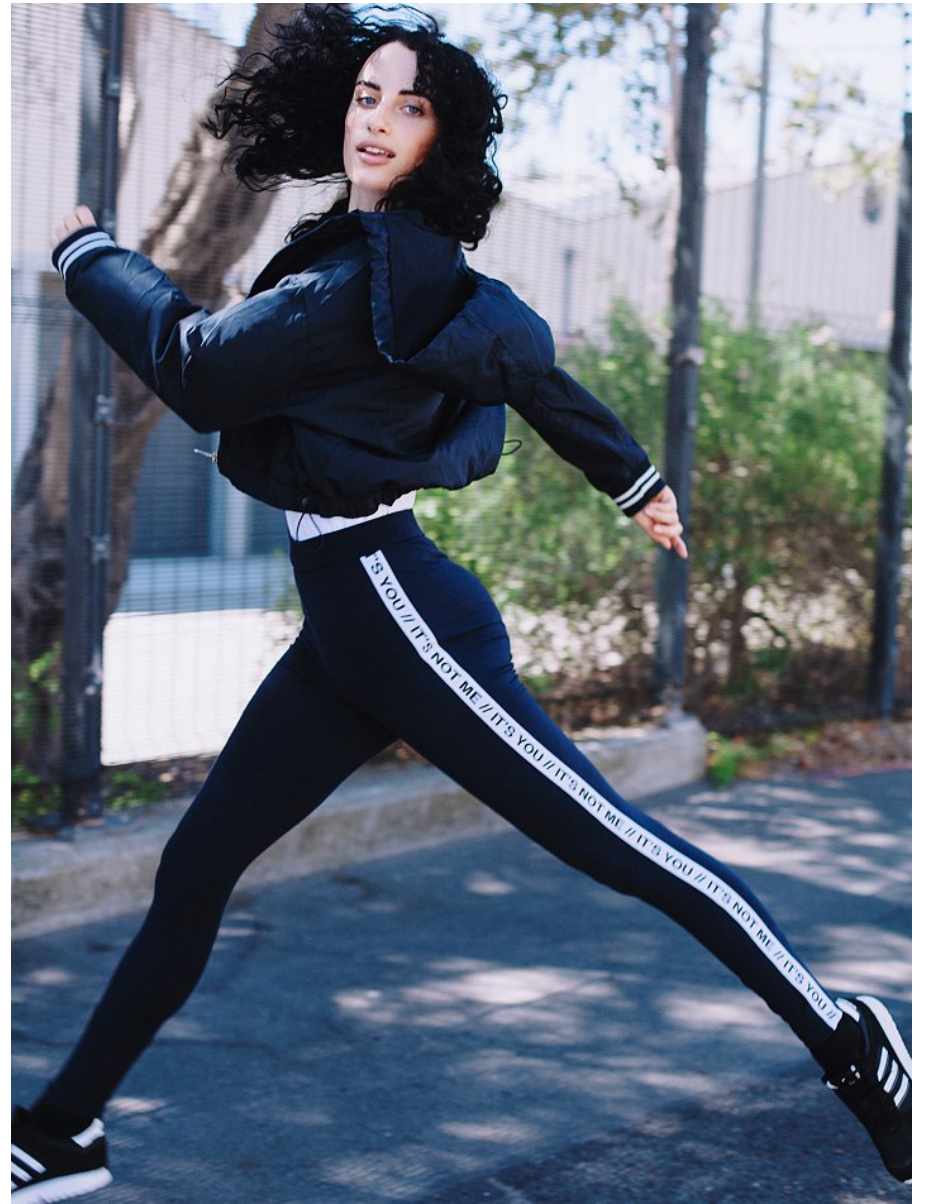


FRAN VAN OUDSHOORN

Height: 170cm Bust: 83cm Waist: 62cm Hips: 89cm Shoe: 6 UK Hair: Dark Brown Eyes: Blue

# BOSS MODELS

CAPE TOWN



FRAN VAN OUDSHOORN

Height: 170cm Bust: 83cm Waist: 62cm Hips: 89cm Shoe: 6 UK Hair: Dark Brown Eyes: Blue

# BOSS MODELS

CAPE TOWN



## FRAN VAN OUDSHOORN

Height: 170cm Bust: 83cm Waist: 62cm Hips: 89cm Shoe: 6 UK Hair: Dark Brown Eyes: Blue

# BOSS MODELS

CAPE TOWN



## FRAN VAN OUDSHOORN

Height: 170cm Bust: 83cm Waist: 62cm Hips: 89cm Shoe: 6 UK Hair: Dark Brown Eyes: Blue



# BOSS MODELS

CAPE TOWN



FRAN VAN OUDSHOORN

Height: 170cm Bust: 83cm Waist: 62cm Hips: 89cm Shoe: 6 UK Hair: Dark Brown Eyes: Blue

# BOSS MODELS

CAPE TOWN



FRAN VAN OUDSHOORN

Height: 170cm Bust: 83cm Waist: 62cm Hips: 89cm Shoe: 6 UK Hair: Dark Brown Eyes: Blue

# BOSS MODELS

CAPE TOWN



FRAN VAN OUDSHOORN

Height: 170cm Bust: 83cm Waist: 62cm Hips: 89cm Shoe: 6 UK Hair: Dark Brown Eyes: Blue

# BOSS MODELS

CAPE TOWN



FRAN VAN OUDSHOORN

Height: 170cm Bust: 83cm Waist: 62cm Hips: 89cm Shoe: 6 UK Hair: Dark Brown Eyes: Blue

# BOSS MODELS

CAPE TOWN



## FRAN VAN OUDSHOORN

Height: 170cm Bust: 83cm Waist: 62cm Hips: 89cm Shoe: 6 UK Hair: Dark Brown Eyes: Blue

# BOSS MODELS

CAPE TOWN



FRAN VAN OUDSHOORN

Height: 170cm Bust: 83cm Waist: 62cm Hips: 89cm Shoe: 6 UK Hair: Dark Brown Eyes: Blue

# BOSS MODELS

CAPE TOWN



FRAN VAN OUDSHOORN

Height: 170cm Bust: 83cm Waist: 62cm Hips: 89cm Shoe: 6 UK Hair: Dark Brown Eyes: Blue

# BOSS MODELS

CAPE TOWN



FRAN VAN OUDSHOORN

Height: 170cm Bust: 83cm Waist: 62cm Hips: 89cm Shoe: 6 UK Hair: Dark Brown Eyes: Blue



# BOSS MODELS

CAPE TOWN



fashion

✦  
Dress R1 799,  
Forever New;  
head scarf R250,  
Zara; earrings  
R425, Jangi

52 | WOH | September 2022



✦  
Dress R2 399, Cpari;  
pearl ring R290 and purple  
ring R295, both Jangi;  
glasses R3 607, Luxottica;  
bag R22999, The Fix

## Find the fine PRINTS

Take your prints up a notch (this season, Florals will always be beautiful and dainty (and this season is seeing the introduction of 'tea party florals') but the print getting all the attention is geometric. Mostly inspired by the '60s or '70s, it's really about going bold (and a little groovy, baby).

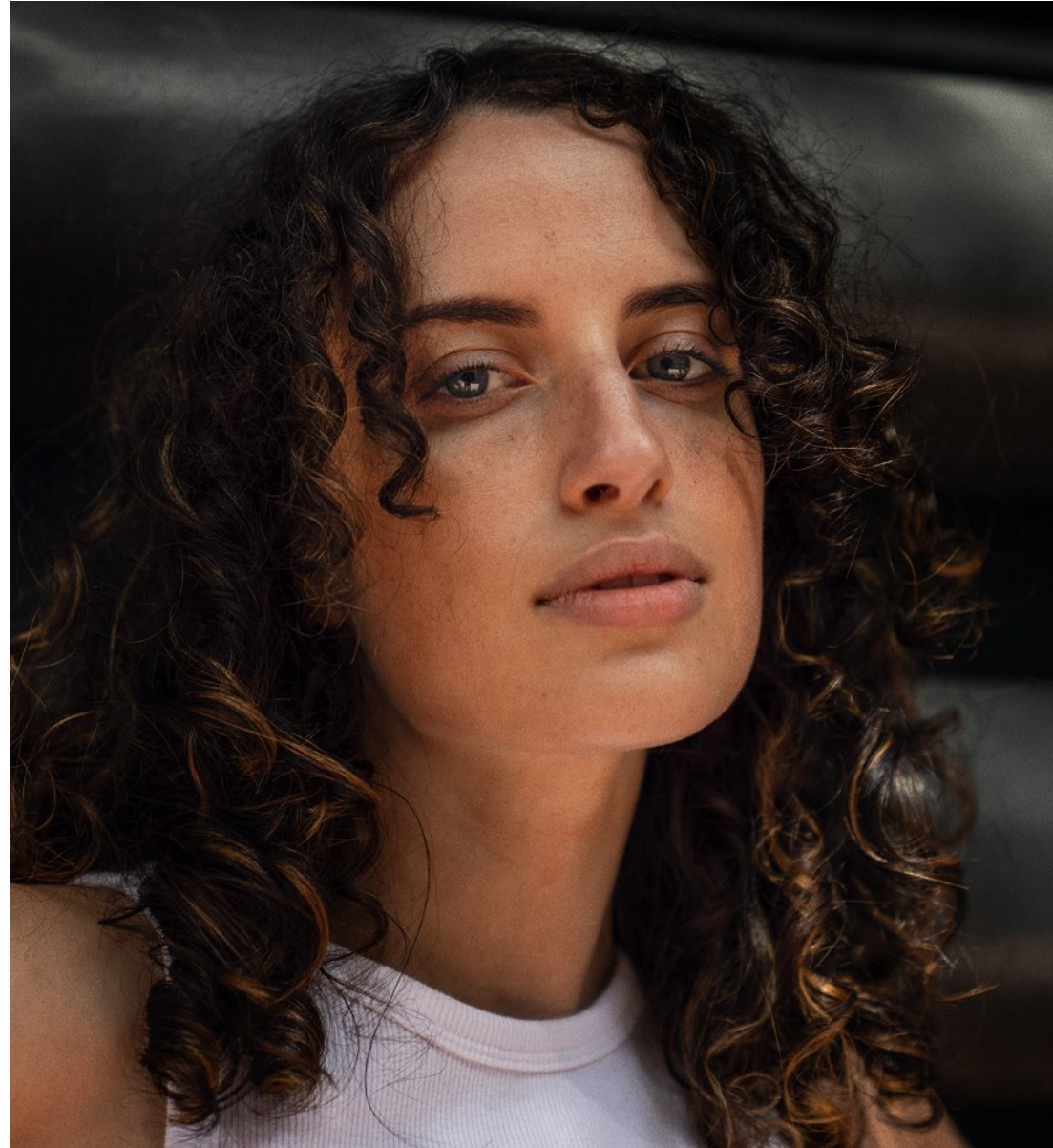
September 2022 | WOH | 53

## FRAN VAN OUDSHOORN

Height: 170cm Bust: 83cm Waist: 62cm Hips: 89cm Shoe: 6 UK Hair: Dark Brown Eyes: Blue

# BOSS MODELS

CAPE TOWN



FRAN VAN OUDSHOORN

Height: 170cm Bust: 83cm Waist: 62cm Hips: 89cm Shoe: 6 UK Hair: Dark Brown Eyes: Blue

# BOSS MODELS

CAPE TOWN



FRAN VAN OUDSHOORN

Height: 170cm Bust: 83cm Waist: 62cm Hips: 89cm Shoe: 6 UK Hair: Dark Brown Eyes: Blue

# BOSS MODELS

CAPE TOWN



## FRAN VAN OUDSHOORN

Height: 170cm Bust: 83cm Waist: 62cm Hips: 89cm Shoe: 6 UK Hair: Dark Brown Eyes: Blue