

BOSS MODELS

CAPE TOWN



ANNA DAVOLL

Height: 182cm Bust: 90cm Waist: 68cm Hips: 98cm Shoe: 6.5 UK Hair: Blonde Eyes: Blue

BOSS MODELS

CAPE TOWN



ANNA DAVOLL

Height: 182cm Bust: 90cm Waist: 68cm Hips: 98cm Shoe: 6.5 UK Hair: Blonde Eyes: Blue

BOSS MODELS

CAPE TOWN



ANNA DAVOLL

Height: 182cm Bust: 90cm Waist: 68cm Hips: 98cm Shoe: 6.5 UK Hair: Blonde Eyes: Blue

BOSS MODELS

CAPE TOWN



ANNA DAVOLL

Height: 182cm Bust: 90cm Waist: 68cm Hips: 98cm Shoe: 6.5 UK Hair: Blonde Eyes: Blue

BOSS MODELS

CAPE TOWN



ANNA DAVOLL

Height: 182cm Bust: 90cm Waist: 68cm Hips: 98cm Shoe: 6.5 UK Hair: Blonde Eyes: Blue

BOSS MODELS

CAPE TOWN



ANNA DAVOLL

Height: 182cm Bust: 90cm Waist: 68cm Hips: 98cm Shoe: 6.5 UK Hair: Blonde Eyes: Blue

BOSS MODELS

CAPE TOWN



ANNA DAVOLL

Height: 182cm Bust: 90cm Waist: 68cm Hips: 98cm Shoe: 6.5 UK Hair: Blonde Eyes: Blue

BOSS MODELS

CAPE TOWN



FLORAL FANTASY

An sich schon ein Hingucker, doch mit Metallic Heels wird der Look zum Fashion-Highlight.
Bluse, ca. 300 Euro, Hose, ca. 370 Euro, beides von Weekend Max Mara. Top von Yemanjá Beard, ca. 280 Euro. Ohrringe von Sabrina Demoff, ca. 230 Euro. Schuhe von Deichmann, ca. 55 Euro

FOTOS MADINE FISCHER
PRODUKTION NADIA ROHNER

petra 21



DRESS TO IMPRESS

Mit Gold kombiniert, bekommt das Kleid noch mehr Star-Appeal.
Kleid von Sly O'K, ca. 150 Euro. Tasche von Sézane, ca. 190 Euro. Ohrringe von Swarovski, ca. 250 Euro. High Heels von Jimmy Choo, ca. 995 Euro

petra 21

ANNA DAVOLL

Height: 182cm Bust: 90cm Waist: 68cm Hips: 98cm Shoe: 6.5 UK Hair: Blonde Eyes: Blue

BOSS MODELS

CAPE TOWN



ANNA DAVOLL

Height: 182cm Bust: 90cm Waist: 68cm Hips: 98cm Shoe: 6.5 UK Hair: Blonde Eyes: Blue

BOSS MODELS

CAPE TOWN



ANNA DAVOLL

Height: 182cm Bust: 90cm Waist: 68cm Hips: 98cm Shoe: 6.5 UK Hair: Blonde Eyes: Blue

BOSS MODELS

CAPE TOWN



ANNA DAVOLL

Height: 182cm Bust: 90cm Waist: 68cm Hips: 98cm Shoe: 6.5 UK Hair: Blonde Eyes: Blue

BOSS MODELS

CAPE TOWN



ANNA DAVOLL

Height: 182cm Bust: 90cm Waist: 68cm Hips: 98cm Shoe: 6.5 UK Hair: Blonde Eyes: Blue

BOSS MODELS

CAPE TOWN

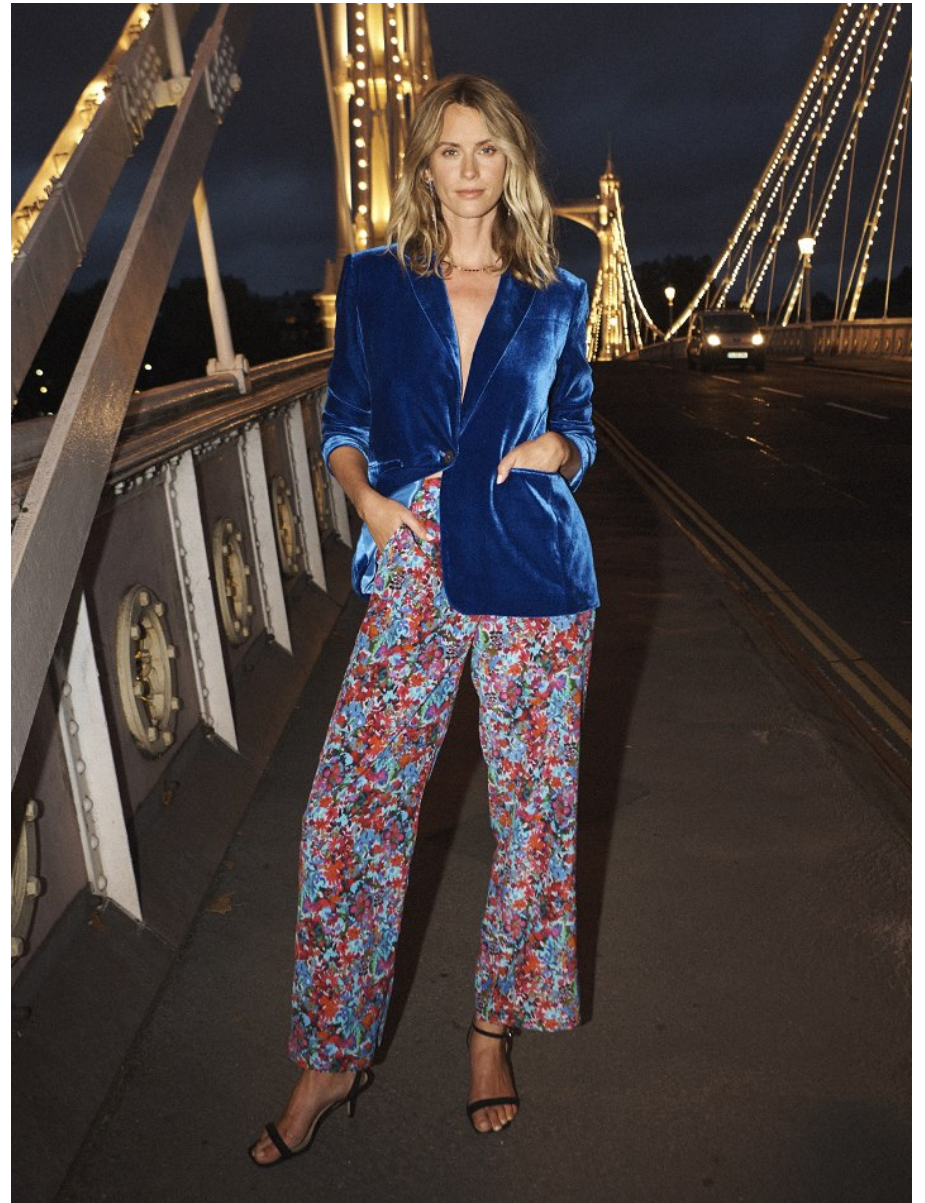


ANNA DAVOLL

Height: 182cm Bust: 90cm Waist: 68cm Hips: 98cm Shoe: 6.5 UK Hair: Blonde Eyes: Blue

BOSS MODELS

CAPE TOWN



ANNA DAVOLL

Height: 182cm Bust: 90cm Waist: 68cm Hips: 98cm Shoe: 6.5 UK Hair: Blonde Eyes: Blue

BOSS MODELS

CAPE TOWN



ANNA DAVOLL

Height: 182cm Bust: 90cm Waist: 68cm Hips: 98cm Shoe: 6.5 UK Hair: Blonde Eyes: Blue

BOSS MODELS

CAPE TOWN



ANNA DAVOLL

Height: 182cm Bust: 90cm Waist: 68cm Hips: 98cm Shoe: 6.5 UK Hair: Blonde Eyes: Blue

BOSS MODELS

CAPE TOWN



WEARS
\$195; pants: \$200,
Bale (mpbale.com),
\$79.95, Florshelm
n.com.au).
EARS
\$100; veil:
by Amalthe Vitale
vitalo.com.au),
\$45; Anita K'
rk Horse (the
e.com.au),
\$16.99, Equip
esponses.com.au).
E PAGE
WEARS
\$19.95; CD by
Kesterson
responsored by
e (embroidme,
Dress: \$285,
me at The
Bakerino
photobooks,
shoes: \$159.95,
oes (wanted
t.au).

ANNA DAVOLL

Height: 182cm Bust: 90cm Waist: 68cm Hips: 98cm Shoe: 6.5 UK Hair: Blonde Eyes: Blue

BOSS MODELS

CAPE TOWN



ANNA DAVOLL

Height: 182cm Bust: 90cm Waist: 68cm Hips: 98cm Shoe: 6.5 UK Hair: Blonde Eyes: Blue

BOSS MODELS

CAPE TOWN



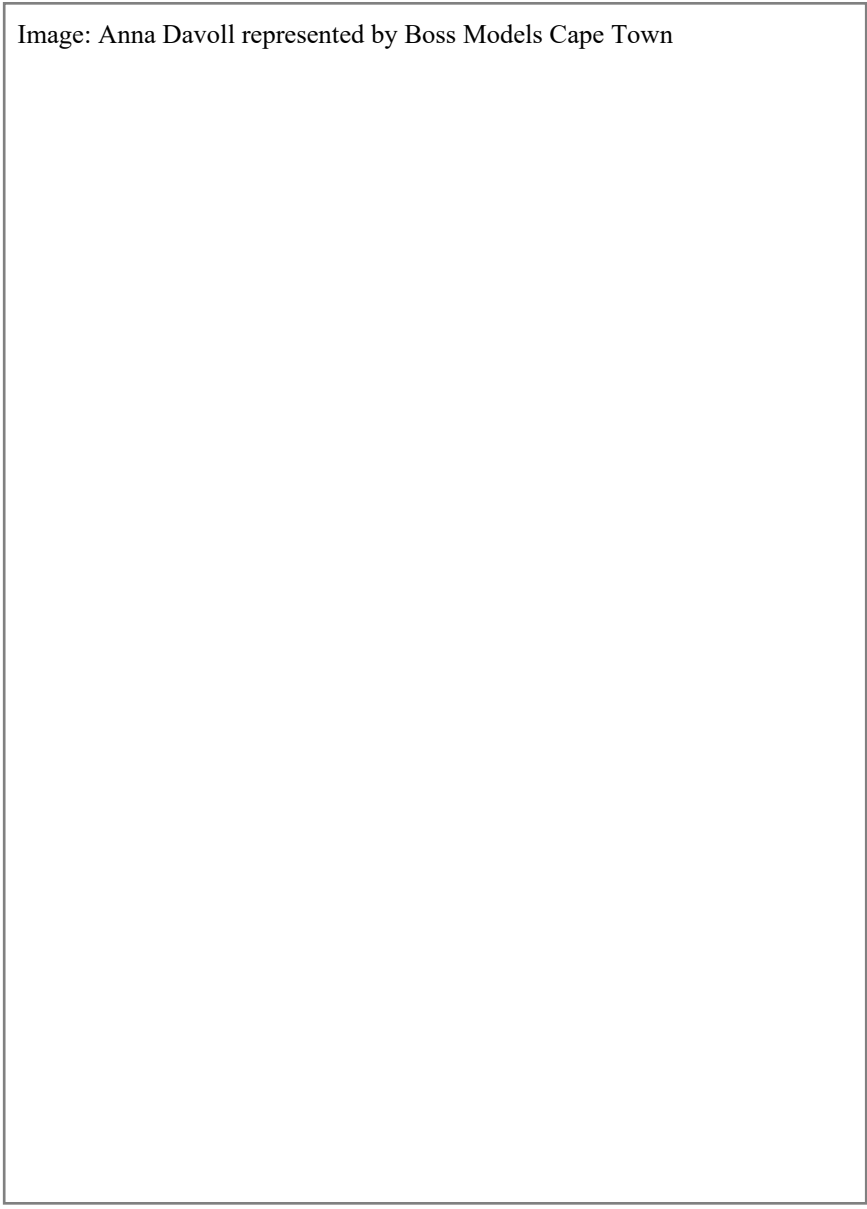
ANNA DAVOLL

Height: 182cm Bust: 90cm Waist: 68cm Hips: 98cm Shoe: 6.5 UK Hair: Blonde Eyes: Blue

BOSS MODELS

CAPE TOWN

Image: Anna Davoll represented by Boss Models Cape Town



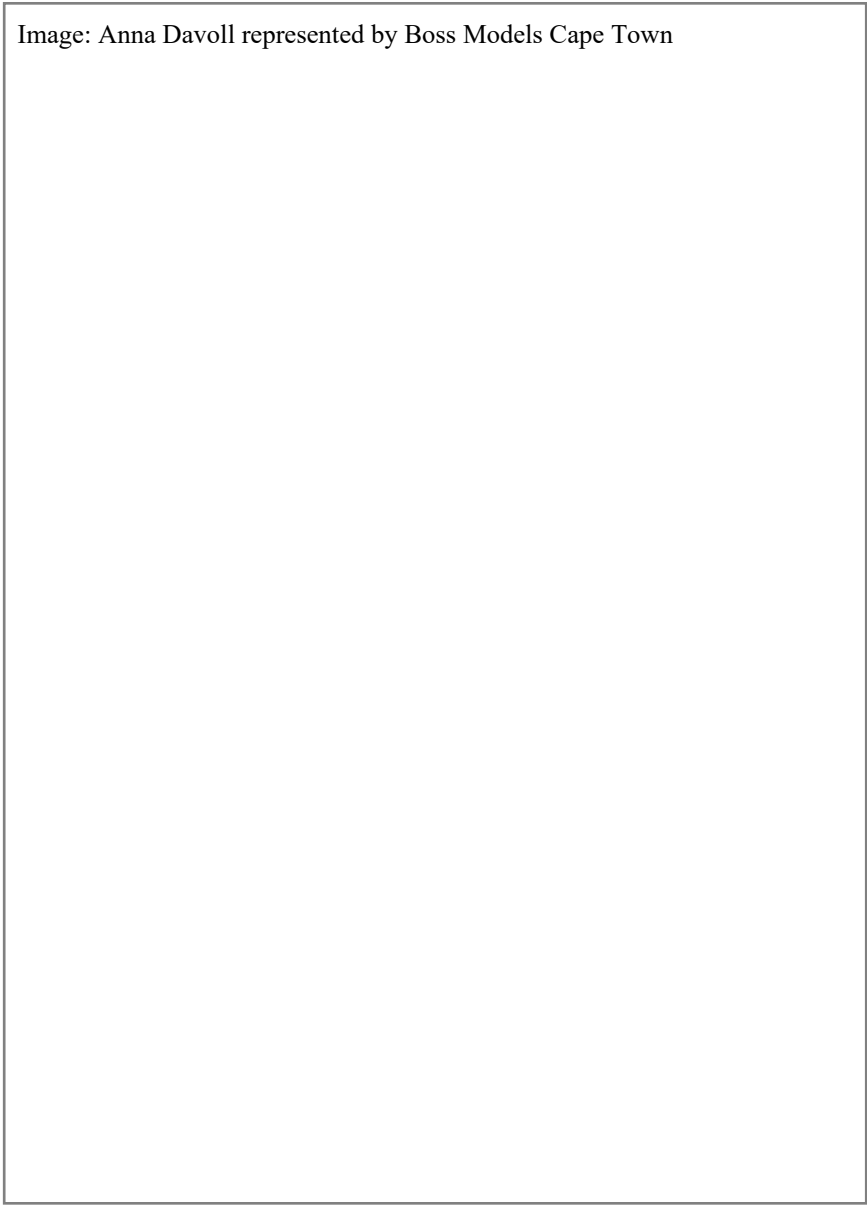
ANNA DAVOLL

Height: 182cm Bust: 90cm Waist: 68cm Hips: 98cm Shoe: 6.5 UK Hair: Blonde Eyes: Blue

BOSS MODELS

CAPE TOWN

Image: Anna Davoll represented by Boss Models Cape Town



ANNA DAVOLL

Height: 182cm Bust: 90cm Waist: 68cm Hips: 98cm Shoe: 6.5 UK Hair: Blonde Eyes: Blue