

**Keep  
It Light**

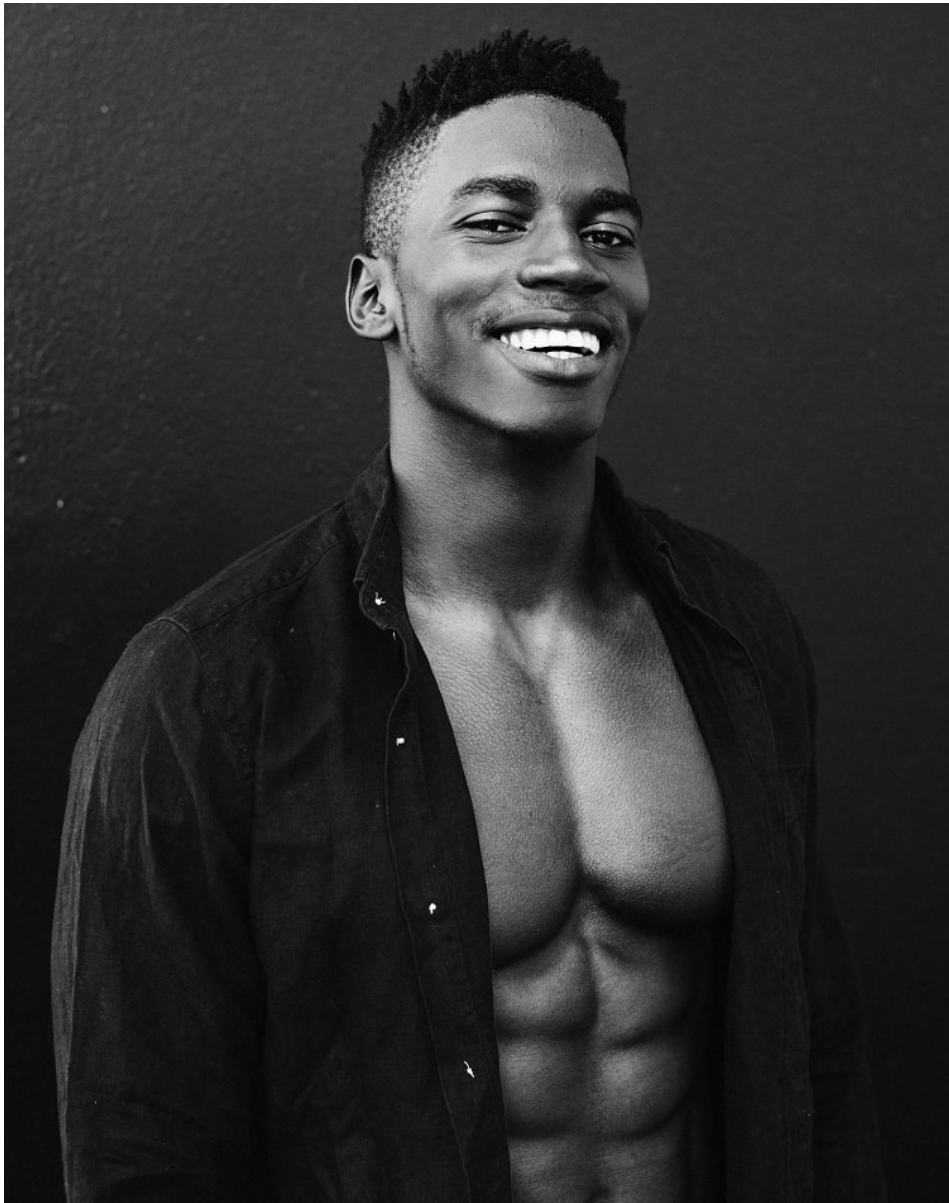
Don't feel restricted to dark shades if you're attending an outdoor wedding. Lighter colours are a great choice for ceremonies in the warmer months. This beige suit creates a light, airy look that gels with pastel colours, bridesmaid dresses and even the wedding décor.

Zara blazer R1 999  
Trenery shirt R399  
Eurosult tie and  
pocket square R290  
Versace sunglasses R4 200  
Montblanc watch R72 100



**OLLIE SOKANYILE**

Height: 183cm Chest: 99cm Waist: 77cm Suit: 39 R Shoe: 9 UK Hair: Black Eyes: Brown



**Mix and Match**

Summer weddings call for light and airy décor, so make sure your attire matches. Mix in pastel shades under light unconstructed suits or blazers (spun from cotton or linen blends) for breathability and boundless style.

LEFT

Woolworths cap R199  
Barberry sunglasses R3 500  
Trenery blazer R3 599  
Nautica shirt R1 099

RIGHT

Arnette sunglasses R2 900  
Woolworths cap R199  
Trenery blazer R3 599  
Trenery shirt R999

**OLLIE SOKANYILE**

Height: 183cm Chest: 99cm Waist: 77cm Suit: 39 R Shoe: 9 UK Hair: Black Eyes: Brown



**citizen**  
*A Division Of Boss Models*



**OLLIE SOKANYILE**

Height: 183cm Chest: 99cm Waist: 77cm Suit: 39 R Shoe: 9 UK Hair: Black Eyes: Brown

# **citizen**

*A Division Of Boss Models*



**OLLIE SOKANYILE**

Height: 183cm Chest: 99cm Waist: 77cm Suit: 39 R Shoe: 9 UK Hair: Black Eyes: Brown





**OLLIE SOKANYILE**

Height: 183cm Chest: 99cm Waist: 77cm Suit: 39 R Shoe: 9 UK Hair: Black Eyes: Brown



**citizen**  
*A Division Of Boss Models*



**OLLIE SOKANYILE**

Height: 183cm Chest: 99cm Waist: 77cm Suit: 39 R Shoe: 9 UK Hair: Black Eyes: Brown



**OLLIE SOKANYILE**

Height: 183cm Chest: 99cm Waist: 77cm Suit: 39 R Shoe: 9 UK Hair: Black Eyes: Brown





**OLLIE SOKANYILE**

Height: 183cm Chest: 99cm Waist: 77cm Suit: 39 R Shoe: 9 UK Hair: Black Eyes: Brown





**OLLIE SOKANYILE**

Height: 183cm Chest: 99cm Waist: 77cm Suit: 39 R Shoe: 9 UK Hair: Black Eyes: Brown



**OLLIE SOKANYILE**

Height: 183cm Chest: 99cm Waist: 77cm Suit: 39 R Shoe: 9 UK Hair: Black Eyes: Brown