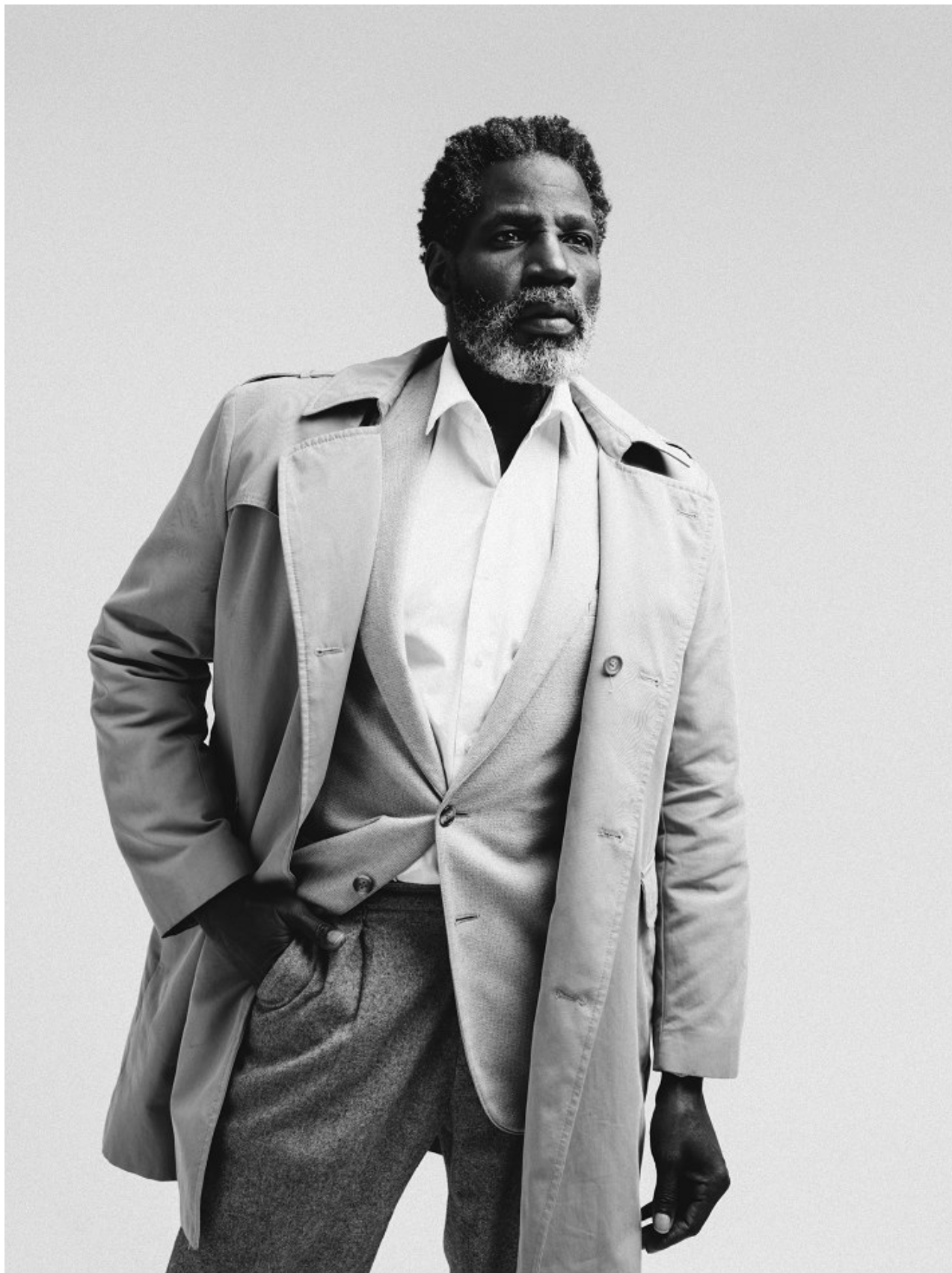


BOSS MODELS

CAPE TOWN



POPE JERROD

Height: 185cm Chest: 106cm Waist: 91cm Suit: 42 L Shoe: 11 UK Hair: Black Eyes: Brown

BOSS MODELS

CAPE TOWN



POPE JERROD

Height: 185cm Chest: 106cm Waist: 91cm Suit: 42 L Shoe: 11 UK Hair: Black Eyes: Brown

BOSS MODELS

CAPE TOWN

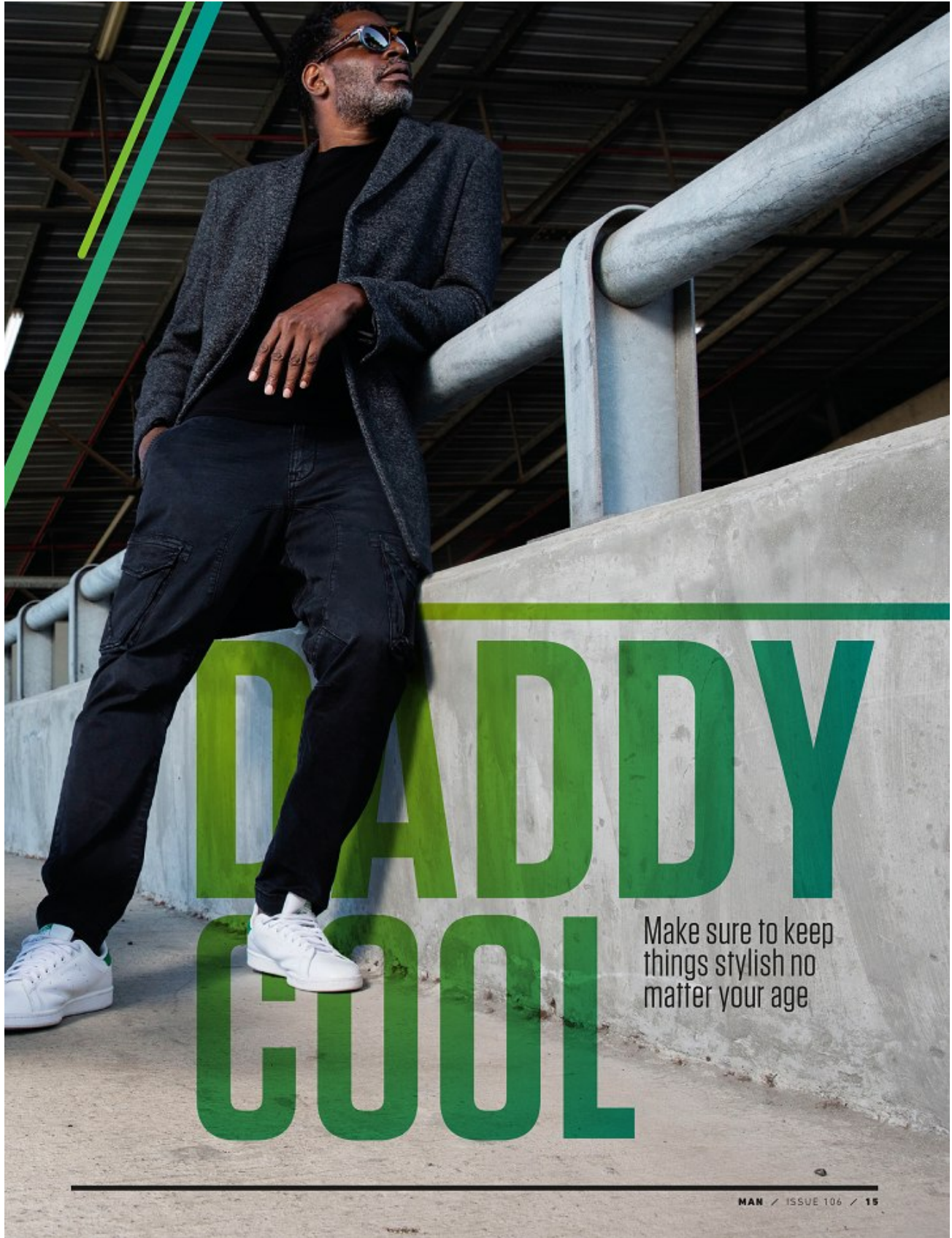


POPE JERROD

Height: 185cm Chest: 106cm Waist: 91cm Suit: 42 L Shoe: 11 UK Hair: Black Eyes: Brown

BOSS MODELS

CAPE TOWN



POPE JERROD

Height: 185cm Chest: 106cm Waist: 91cm Suit: 42 L Shoe: 11 UK Hair: Black Eyes: Brown

BOSS MODELS

CAPE TOWN



POPE JERROD

Height: 185cm Chest: 106cm Waist: 91cm Suit: 42 L Shoe: 11 UK Hair: Black Eyes: Brown

BOSS MODELS

CAPE TOWN

FABIANI

t r a i l **BLAZER** L I F E I N L I N E N

The linen suit is summer's most sophisticated and versatile wardrobe staple. Its undeniable laid-back elegance allows you to roam freely across dress codes. Whether its worn as a suit, or you're pairing the jacket with tailored shorts, you're sure to make a statement at a business lunch, al fresco date night, or weekend away.

TAILOR MADE

Refine your linen look with the FABIANI complimentary tailoring service. Speak to one of our in-store fashion stylists for a consultation.

Pope wears:
Linen Blazer R4499
T-Shirt R799
Linen Shorts R1299
Sunglasses R599

4

POPE JERROD

Height: 185cm Chest: 106cm Waist: 91cm Suit: 42 L Shoe: 11 UK Hair: Black Eyes: Brown

BOSS MODELS

CAPE TOWN



POPE JERROD

Height: 185cm Chest: 106cm Waist: 91cm Suit: 42 L Shoe: 11 UK Hair: Black Eyes: Brown

BOSS MODELS

CAPE TOWN

FABIANI

THE *LINEN* LIFE

FINE PRINT

An instinctual extension of your linen wardrobe, the abstract-print short sleeve shirt is a sharp, celebratory staple. Ours is designed to make a bold impression no matter the dress code.

Button it down at the beach, up on the town, and allow its joyous motif to give your suiting rotation a fresh perspective.

Pope wears
Cotton Shirt *R1299*
Linen Shorts *R1299*
Sunglasses *R599*



Scan to shop Il Collezione Lino.
Choose between home delivery
or in-store pickup options.



10

POPE JERROD

Height: 185cm Chest: 106cm Waist: 91cm Suit: 42 L Shoe: 11 UK Hair: Black Eyes: Brown

BOSS MODELS

CAPE TOWN



POPE JERROD

Height: 185cm Chest: 106cm Waist: 91cm Suit: 42 L Shoe: 11 UK Hair: Black Eyes: Brown

BOSS MODELS

CAPE TOWN



POPE JERROD

Height: 185cm Chest: 106cm Waist: 91cm Suit: 42 L Shoe: 11 UK Hair: Black Eyes: Brown

BOSS MODELS

CAPE TOWN



POPE JERROD

Height: 185cm Chest: 106cm Waist: 91cm Suit: 42 L Shoe: 11 UK Hair: Black Eyes: Brown

BOSS MODELS

CAPE TOWN

GOstyle

Look sharp | Live smart

In the navy

Steer your wardrobe into international waters for some worldly intrigue

Creative direction by
Jason Alexander Basson
Photographs by
Jonathan Taylor

The item blazer

A plain white blazer has that luxe-leisure factor for a lavish look. It can also be worn with any number of colours.

Pope wears **Robert Daniel** blazer R4 800 (for full suit). **Simon Carter** shirt R1 550. **Lukhanyo Mdingi** at AKJP Collective pants R1 010. **Robert Daniel** hat R900, cravat R180. **Festina** at S Bacher & Co Chrono Bike watch R4 034. **Crockett & Jones** at Barker Footwear boat shoes R625

Page
98



Festival season is here. Make sure you look the part

Page
102



Cartier style director on the Drive de Cartier

Page
104



How to slow the signs of ageing

OCTOBER 2016 **GO.CO.ZA** 89

POPE JERROD

Height: 185cm Chest: 106cm Waist: 91cm Suit: 42 L Shoe: 11 UK Hair: Black Eyes: Brown

BOSS MODELS

CAPE TOWN



POPE JERROD

Height: 185cm Chest: 106cm Waist: 91cm Suit: 42 L Shoe: 11 UK Hair: Black Eyes: Brown

BOSS MODELS

CAPE TOWN



POPE JERROD

Height: 185cm Chest: 106cm Waist: 91cm Suit: 42 L Shoe: 11 UK Hair: Black Eyes: Brown

BOSS MODELS

CAPE TOWN

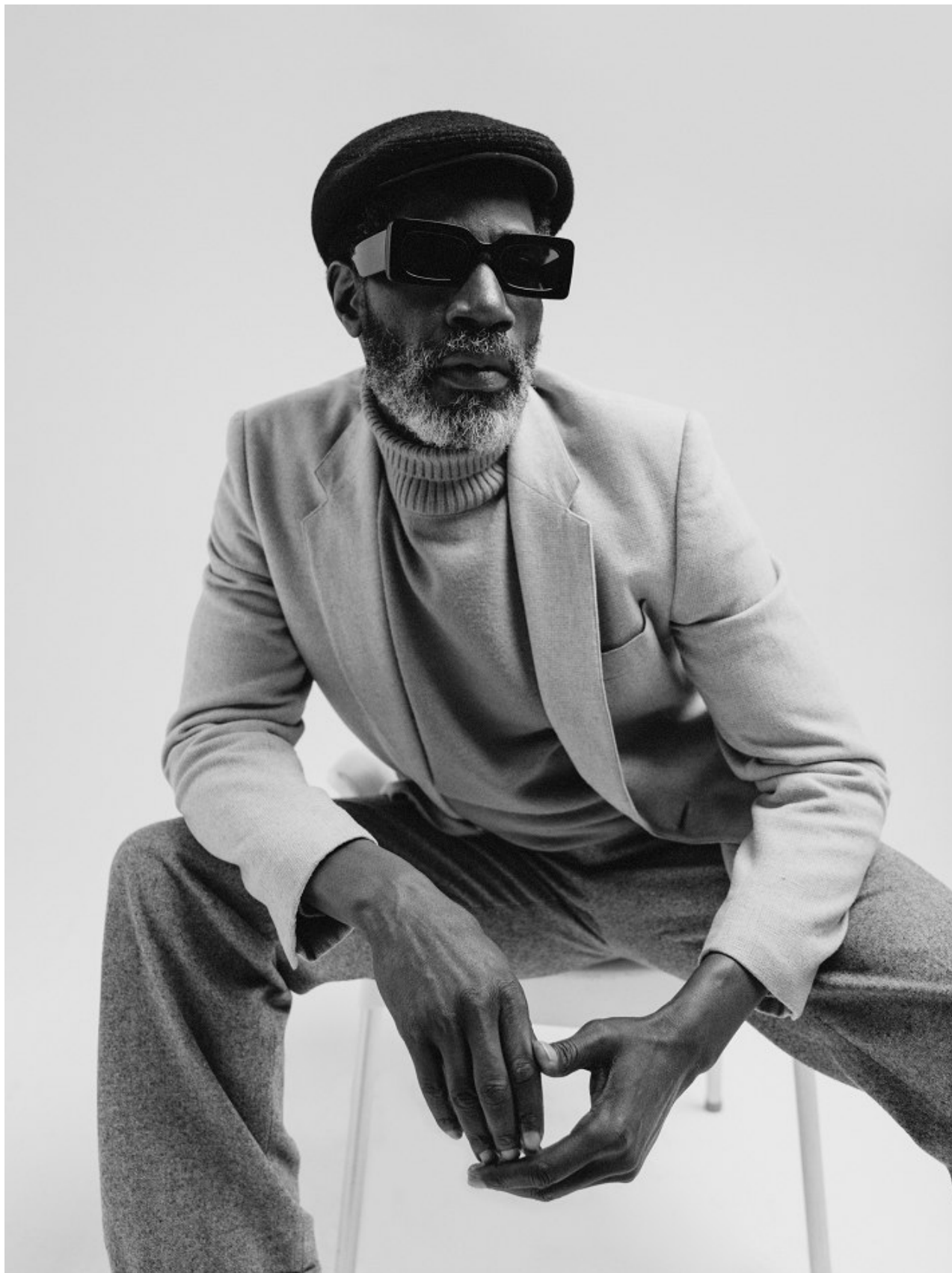


POPE JERROD

Height: 185cm Chest: 106cm Waist: 91cm Suit: 42 L Shoe: 11 UK Hair: Black Eyes: Brown

BOSS MODELS

CAPE TOWN



POPE JERROD

Height: 185cm Chest: 106cm Waist: 91cm Suit: 42 L Shoe: 11 UK Hair: Black Eyes: Brown

BOSS MODELS

CAPE TOWN



POPE JERROD

Height: 185cm Chest: 106cm Waist: 91cm Suit: 42 L Shoe: 11 UK Hair: Black Eyes: Brown

BOSS MODELS

CAPE TOWN

STYLE | GET THE LOOK

RETURN TO ELEGANCE

Separate yourself from the crowd when the dress code is smart casual



Stock your wardrobe with crisp white shirts. They're what you wear when you don't know what to wear.

Keep everything else simple when you're rocking a statement jacket like this one.

Shirt R420,
blazer R1 400
and pants R499,
all Markham;
Puma sneakers
R1 299.95,
sportscene;
watch and
pocket square,
both stylist's own

POPE JERROD

Height: 185cm Chest: 106cm Waist: 91cm Suit: 42 L Shoe: 11 UK Hair: Black Eyes: Brown

BOSS MODELS

CAPE TOWN



POPE JERROD

Height: 185cm Chest: 106cm Waist: 91cm Suit: 42 L Shoe: 11 UK Hair: Black Eyes: Brown

BOSS MODELS

CAPE TOWN

A full-page photograph of a man standing on an airport tarmac. He is wearing a light-colored, possibly beige or cream, suit jacket and matching trousers. Underneath the jacket, he wears a dark blue patterned shirt. He is also wearing dark brown leather shoes. He has a short beard and is looking off to the side. In the background, the side of a white airplane is visible, with its cabin door open. The lighting is bright, suggesting a sunny day. The text "KURT GEIGER" is overlaid in large, white, sans-serif capital letters across the middle of the image.

KURT GEIGER

POPE JERROD

Height: 185cm Chest: 106cm Waist: 91cm Suit: 42 L Shoe: 11 UK Hair: Black Eyes: Brown

BOSS MODELS

CAPE TOWN



Jersey R360,
jacket R750 and
sunglasses R120,
all Markham

POPE JERROD

Height: 185cm Chest: 106cm Waist: 91cm Suit: 42 L Shoe: 11 UK Hair: Black Eyes: Brown

BOSS MODELS

CAPE TOWN

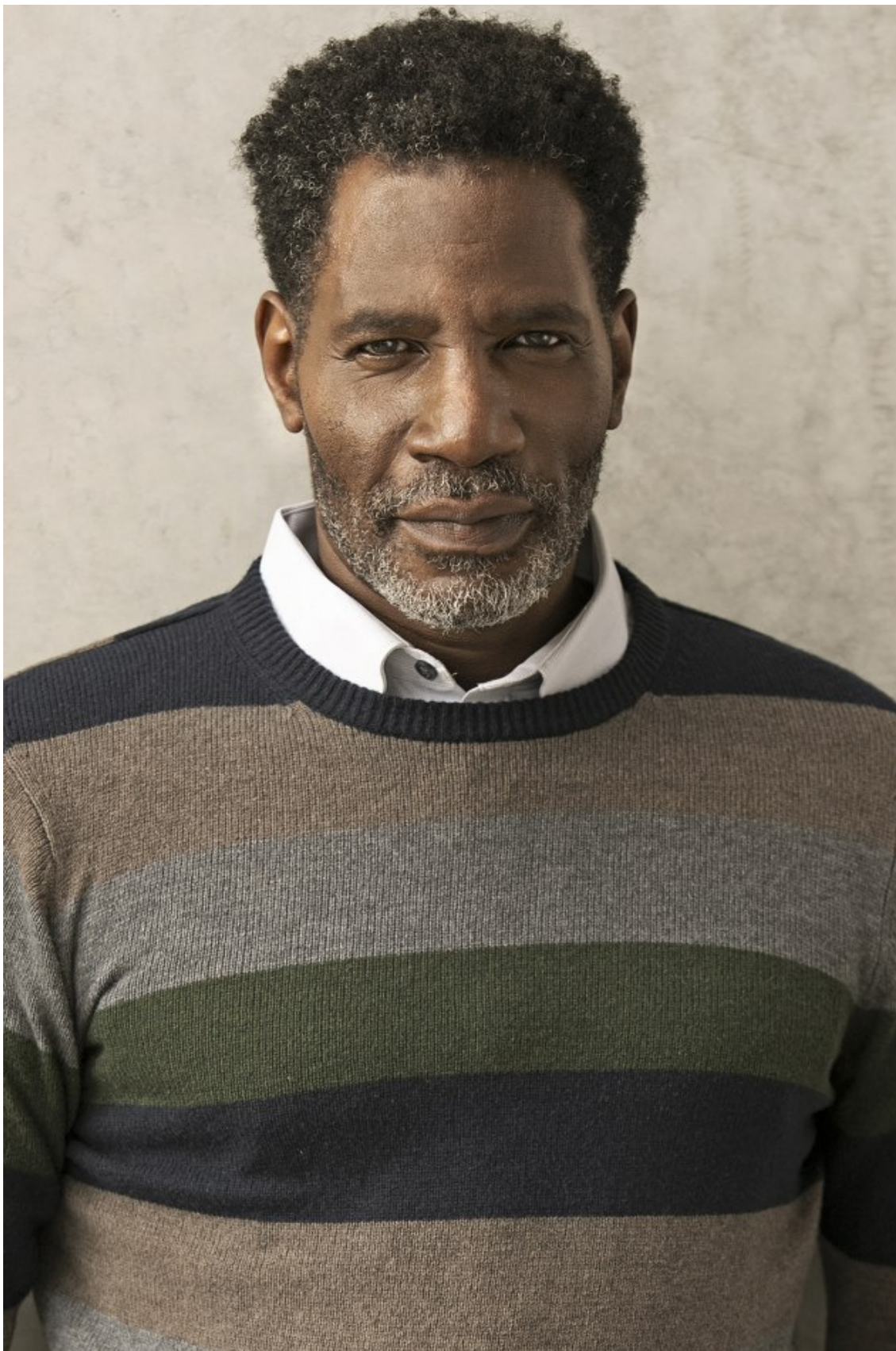


POPE JERROD

Height: 185cm Chest: 106cm Waist: 91cm Suit: 42 L Shoe: 11 UK Hair: Black Eyes: Brown

BOSS MODELS

CAPE TOWN



POPE JERROD

Height: 185cm Chest: 106cm Waist: 91cm Suit: 42 L Shoe: 11 UK Hair: Black Eyes: Brown

BOSS MODELS

CAPE TOWN



POPE JERROD

Height: 185cm Chest: 106cm Waist: 91cm Suit: 42 L Shoe: 11 UK Hair: Black Eyes: Brown

BOSS MODELS

CAPE TOWN



Fabiani.

#AReturntoForm

www.fabiani.co.za

POPE JERROD

Height: 185cm Chest: 106cm Waist: 91cm Suit: 42 L Shoe: 11 UK Hair: Black Eyes: Brown

BOSS MODELS

CAPE TOWN



POPE JERROD

Height: 185cm Chest: 106cm Waist: 91cm Suit: 42 L Shoe: 11 UK Hair: Black Eyes: Brown